

Assembly Instruction Sheet #IS-8318P50C-20+15+5+1(Clear)-B For Style 8318P50C-20+15+5+1(Clear)-B

Tools Required: Flathead screwdriver, Phillips screwdriver, pliers, wire cutters, wire strippers, electrical tape, safety glasses.

Light Source: (33) Candelabra Base Bulbs 60W Maximum.

Estimated Assembly Time: 20-30 minutes

Preparation: Identify and inspect all parts before beginning installation. Check package content list and diagrams below to be sure all parts are present. If any parts are missing or damaged, do not attempt to assemble, install, or operate the fixture. Contact customer service for replacement parts.

⚠ Warnings and Cautions

Turn off electricity at circuit breaker or main fuse box before installation. Consult a licensed electrician if in doubt.

These instructions are provided for your safety. It is very important you read them completely before installing the fixture.

We strongly recommend that a licensed, professional electrician perform the installation.

Disconnect fixture from power source before replacing bulbs. Make sure bulbs are given sufficient time to cool before removal.

STEP 1 -Install Support Arms

A.(Refer to SUPPORT ARMS DISTRIBUTION) Pass supply wires from support arms through plate with coupling and plate with socket as shown. Secure them together by threading lock screws onto the plates. Hand tighten until snug with screwdrivers.

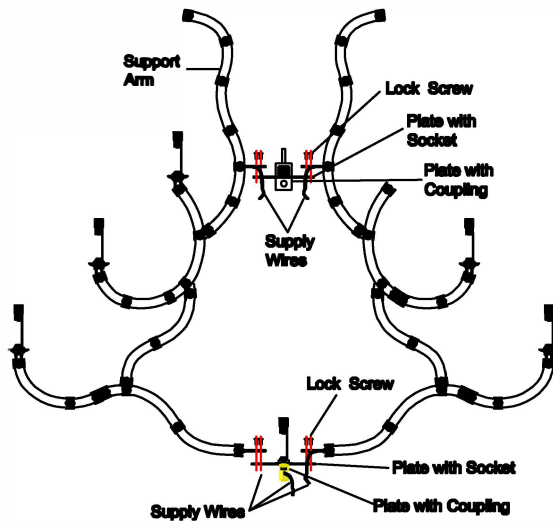


Figure 1

SUPPLY WIRES DISTRIBUTION

STEP 2 -Install Cap, Crystal Cap and Fixture Loops

A. Pass supply wire and ground wire through the plate with coupling.

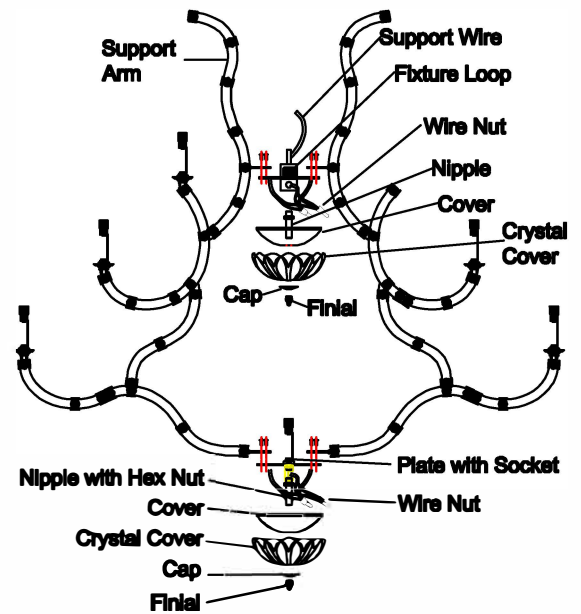


Figure 2

Wire Nut
Smooth side of supply wire identified with the label "L" Smooth side of wire from Support Arms identified with the label "L"

Ribbed side of supply wire identified with the label "N" Ribbed side of wire from Support Arms identified with the label "N"

WIRE CONNECTIONS