

# WAC LIGHTING

## 4" Low Voltage Die-Cast Gimbal Ring Trim

| Model & Light Source | Lumens | Finish            |
|----------------------|--------|-------------------|
| HR-D417 Halogen MR16 |        | BN Brushed Nickel |
| HR-D417LED LED MR16  |        | WT White          |

Example: **HR-D417-BN**

### DESCRIPTION

Engineered for high-performance in a compact fixture, 4" Low Voltage Recessed Downlights are styled with form and function. Available for Non-IC installations, a variety of decorative adjustable and Wet Location trim options are available.

### FEATURES

- Accommodates most LED MR16 or Halogen MR16 lamps. Models with LED, includes LED MR16
- Center lamp holder allows lamp to be tilted up to 25° from vertical
- The supplied clear glass lens can be replaced with one lens accessory
- Steel spring clips secure trim to housing
- 5 year warranty

### SPECIFICATIONS

|               |   |
|---------------|---|
| Construction: | Die-cast aluminum   |
| Input:        | 12 VAC  |
| Light Source: | LED MR16, Halogen MR16  |
| Finish:       | Electrostatically Powder Coated White, Electroplated Brushed Nickel |
| Standards:    | UL, cUL, Damp Location Listed                                       |

Fixture Type: \_\_\_\_\_

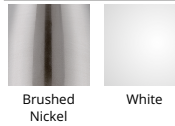
Catalog Number: \_\_\_\_\_

Project: \_\_\_\_\_

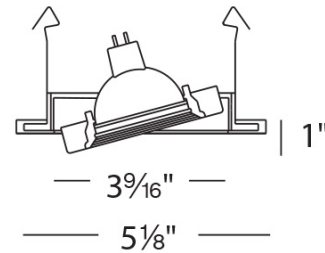
Location: \_\_\_\_\_



### FINISHES



### LINE DRAWING



Fixture Type: \_\_\_\_\_






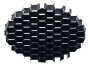
Catalog Number: \_\_\_\_\_

Project: \_\_\_\_\_

Location: \_\_\_\_\_

## 4" Low Voltage Die-Cast Gimbal Ring Trim

### ACCESSORIES

|   | <i>Model</i>   | <i>Description</i>   | <i>Finish</i>   |
|---|--|--|---|
|    | <b>LENS-16-AMB</b><br><b>LENS-16-BLU</b><br><b>LENS-16-GRN</b><br><b>LENS-16-RED</b> | <i>Colored Lens</i><br><i>Colored Lens</i><br><i>Colored Lens</i><br><i>Colored Lens</i> | <i>Amber</i><br><i>Blue</i><br><i>Green</i><br><i>Red</i> |
|    | <b>LENS-16-FR</b>  | <i>Clear/Frosted Lens</i>  | <i>Frosted</i>  |
|    | <b>LENS-16-SPR</b>   | <i>Spread Lens</i>   | <i>Spread Lens</i>  |
|  | <b>LENS-16-UVF</b>   | <i>UV Filter lens</i>  | <i>Clear</i>  |
|  | <b>LENS-16-BEL</b>   | <i>Beam Elongating Lens</i>  | <i>Beam Elongating</i>                                    |
|  | <b>LENS-16-HCL</b>   | <i>Honeycomb Louver</i>  | <i>Black</i>  |

# WAC LIGHTING

## 4" Low Voltage Remodel Non-IC Housing

### Model & Product

HR-8401E 4in Electronic Low Voltage Remodel Non-IC Housing

Example: **HR-8401E**

### DESCRIPTION

Engineered for high-performance in a compact fixture, 4" Low Voltage Recessed Downlights are styled with form and function. Available with a variety of decorative adjustable and wet location trim options are available.

### FEATURES

- Integral electronic transformer
- J-Box and transformer accessible through ceiling
- Advanced auto-reset, soft start and short circuit protection features
- Supplied thermal protector protects against over-lamping
- Suitable for 2" 6" joist installations, for use in shallow applications
- Transformer included
- 5 year warranty

### SPECIFICATIONS

|                    |   |
|--------------------|---|
| Construction:      | 20 gauge galvanized steel   |
| Power:             | 50W   |
| Input:             | 120 VAC, 50/60Hz  |
| Dimming:           | ELV: 100-10%  |
| Light Source:      | Halogen   |
| Mounting:          | Two heavy gauge inner retention clips push out onto ceiling or other mounting surface to firmly hold housing in place |
| Cut Out:           | 4 9/16"   |
| Ceiling Thickness: | 3/4"  |
| Operating Temp:    | -4°F to 104°F (-20°C to 40°C)   |
| Standards:         | UL, cUL, Damp Location Listed, Non IC   |

Fixture Type: \_\_\_\_\_

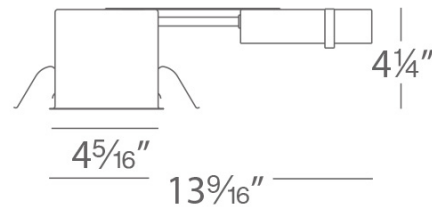
Catalog Number: \_\_\_\_\_

Project: \_\_\_\_\_

Location: \_\_\_\_\_



### LINE DRAWING



# WAC LIGHTING

## 4" Low Voltage

### New Construction Non-IC Housing

#### Model & Product

HR-8402E 4in Electronic Low Voltage New Construction Non-IC Housing

Example: **HR-8402E**

#### DESCRIPTION

Engineered for high-performance in a compact fixture, 4" Low Voltage Recessed Downlights are styled with form and function. Available with a variety of decorative adjustable and Wet Location trim options are available.

#### FEATURES

- Integral electronic transformer
- J-Box and transformer accessible through ceiling
- Advanced auto-reset, soft start and short circuit protection features
- Supplied thermal protector protects against over-lamping
- Transformer included
- 5 year warranty

#### SPECIFICATIONS

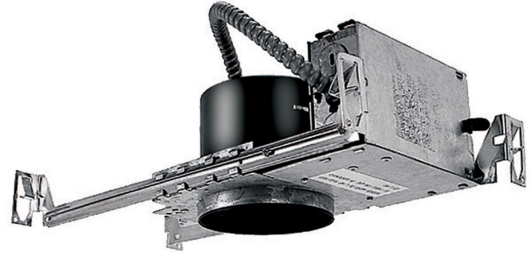
|                    |   |
|--------------------|---|
| Construction:      | 20 gauge galvanized steel   |
| Power:             | 50W   |
| Input:             | 120 VAC, 50/60Hz  |
| Dimming:           | ELV: 100-10%  |
| Light Source:      | Halogen   |
| Mounting:          | Supplied with hanger bars, adjustable from 15"-242" to accommodate various joist construction and grid sizes. |
| Cut Out:           | 4 9/16"   |
| Ceiling Thickness: | 3/4"  |
| Operating Temp:    | -4°F to 104°F (-20°C to 40°C)   |
| Standards:         | UL, cUL, Damp Location Listed, Non IC   |

Fixture Type: \_\_\_\_\_

Catalog Number: \_\_\_\_\_

Project: \_\_\_\_\_

Location: \_\_\_\_\_



#### LINE DRAWING

