

# CRYST RAMA



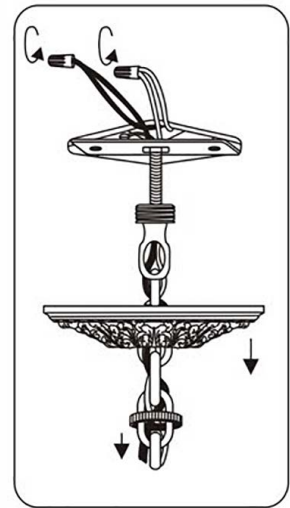
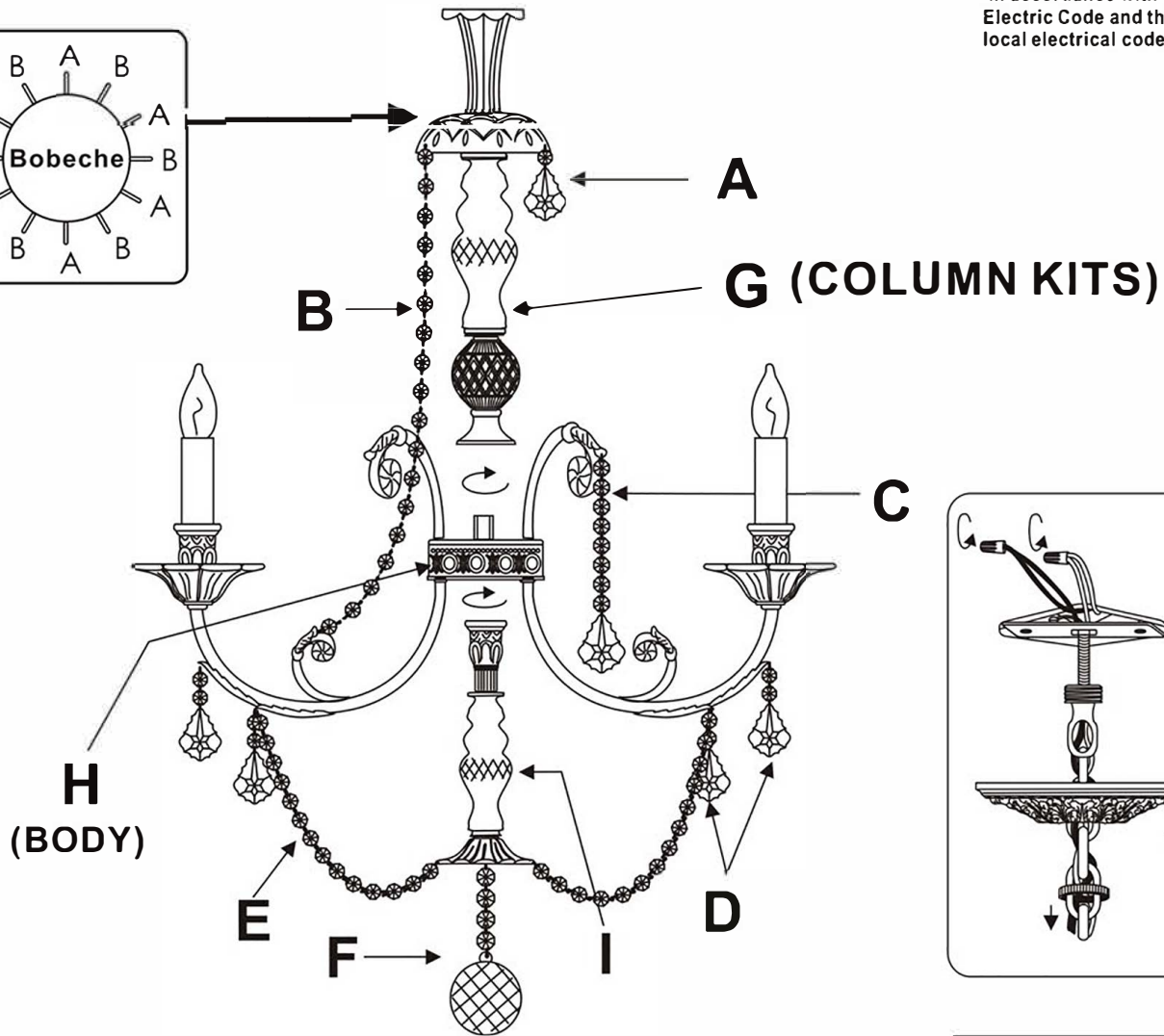
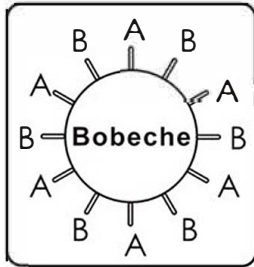
1958


95 Cantiague Rock Road, Westbury NY 11590  
 ph:516.931.9090 fax: 516. 931.1254  
 info@crystorama.com www.crystorama.com


## MODEL#:5116 ASSEMBLY AND DRESSING INSTRUCTIONS





All electrical components must be installed by a licensed electrician in accordance with the National Electric Code and the appropriate local electrical codes.



A=  (20/62-2.5"+1 Jewel)\*6pcs (Every other pin hole.)

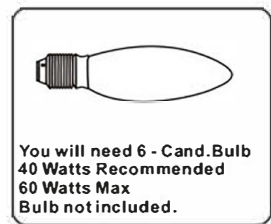
B=  (19 Jewels Strand)\*6pcs (Every other pin hole.)

C=  (20/75-3" + 8 Jewels)\*6pcs

D=  (20/75-3" + 2 Jewels)\*12pcs

E=  (16 Jewels Strand)\*6pcs

F=  (1x40mm Ball + 6 Jewels)\*1pc



### ASSEMBLY STEPS:

- 1) G → H
- 2) I → H
- 3) A.B.C.D.E.F → H