

SIMONE

FR47751BNG

MEDIUM CONVERTIBLE CHANDELIER

Simone has the timeless charm to infuse any space with opulent luxury. Fashioned with natural alabaster panels in a traditional tiered style, the effortless appeal speaks for itself. Perfect for dining rooms, foyers, and grand spaces, Simone is a conversation-starting piece that is truly a work of art.

DETAILS

FINISH:	Burnished Gold
MATERIAL:	Steel
GLASS:	Alabaster
DIMMABLE:	YES, WITH DIMMABLE LAMP (NOT INCLUDED)

DIMENSIONS

WIDTH:	24"
HEIGHT:	15"
WEIGHT:	35.1lb

LIGHT SOURCE

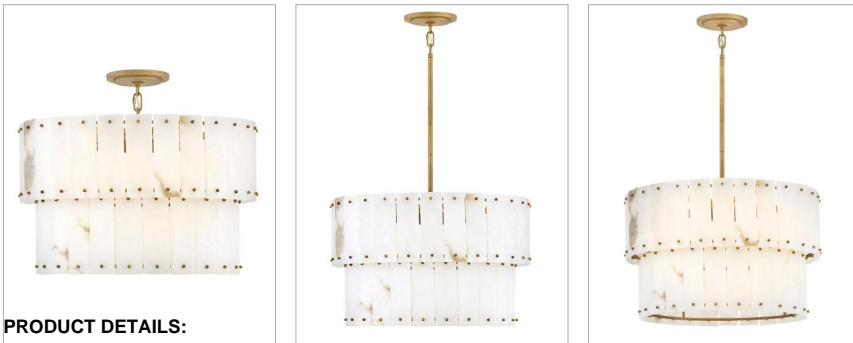
LIGHT SOURCE:	Socketed
WATTAGE:	6-5w Cand. LED, 60w Equiv.
VOLTAGE:	120v

MOUNTING

CANOPY:	6.5" Dia.
LEAD WIRE:	1 X 144"
MAX HEIGHT:	50.5

SHIPPING

CARTON LENGTH:	29
CARTON WIDTH:	29
CARTON HEIGHT:	24.5
CARTON WEIGHT:	51.8



PRODUCT DETAILS:

- This fixture includes multiple down stems in various lengths to customize the installation height of the fixture, including one 6" stem and two 12" stems
- Convertible fixture can be hung as a pendant or semi-flush mount
- Suitable for use in dry (indoor) locations as defined by NEC and CEC. Meets United States UL Underwriters Laboratories & CSA Canadian Standards Association Product Safety Standards.
- Classic, elegant lines and timeless details enhance a traditional space
- Luxurious gold finish with opulent sheen

HINKLEY

HINKLEY
33000 Pin Oak Parkway
Avon Lake, OH 44012

PHONE: (440) 653-5500
Toll Free: 1 (800) 446-5539

hinkley.com