

With its unassuming minimalist profile, The Vex outdoor LED wall sconce features up and down lighting and delivers a wide range of optical control and illumination options in a unique and deceptively simple design. Independent, up and down beam angles from 10° - 120° are achieved with simple tool-free adjustment. Beams can be set symmetric or asymmetric in both directions and are lockable. Angle markers ensure consistent and precise aiming and adjustment from fixture to fixture. Vex is ideal for indoor or outdoor accent lighting, ambient and/or way-finding applications where beam angle is critical and/or being used to add dramatic effects.

Key features

- Tool-free, independent, up/down beam angle adjustment 10° - 120°
- Asymmetric or Symmetric Beam Shaping
- Lockable
- Angle markers for consistent and precise aiming

SPECIFICATIONS

| | |
|-----------------------|---|
| DELIVERED LUMENS | 554.3 |
| WATTS | 18.7 |
| VOLTAGE | Universal 120V - 277V |
| DIMMING | 0-10V, ELV, TRAC, CL |
| LIGHT DISTRIBUTION | Symmetric or Asymmetric depending on barn doors position |
| MOUNTING OPTIONS | Wall |
| OPTICS | Adjustable beam spread |
| CCT | 2700K, 3000K or 4000K |
| CRI | 90+ |
| COLOR BINNING | 3-Step |
| BUG RATING | B0-U3-G0 |
| DARK SKY | Non-Compliant |
| WET LISTED | IP65 |
| GENERAL LISTING | ETL, ADA |
| CALIFORNIA TITLE 24 | Can be used to comply with CEC 2016 Title 24 Part 6 for outdoor use. Registration with CEC Appliance Database not required. |
| START TEMP | -30°C |
| FIELD SERVICEABLE LED | Yes |
| CONSTRUCTION | Aluminum |
| HARDWARE | Stainless Steel |
| FINISH | Powder Coat |
| LED LIFETIME | L70; 35,000 Hours |
| WARRANTY* | 5 years |
| WEIGHT | 2.4 lbs. |

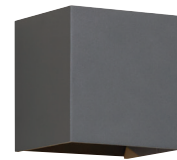
* Visit techlighting.com for specific warranty limitations and details.
Ships with optional acrylic cover for protection against outdoor debris.



VEX
shown in black



VEX
shown in bronze



VEX
shown in charcoal

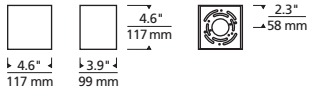


VEX
shown in white

ORDERING INFORMATION

| 7000WVEX | CRI/CCT | LENGTH | FINISH | INPUT VOLTAGE |
|----------|---------------|--------|------------|-------------------|
| 927 | 90 CRI, 2700K | 4 4" | H CHARCOAL | UNV UNV 120V-277V |
| 930 | 90 CRI, 3000K | | Z BRONZE | |
| 940 | 90 CRI, 4000K | | W WHITE | |
| | | | B BLACK | |

SHIPS WITH OPTIONAL ACRYLIC COVER FOR PROTECTION AGAINST OUTDOOR DEBRIS.



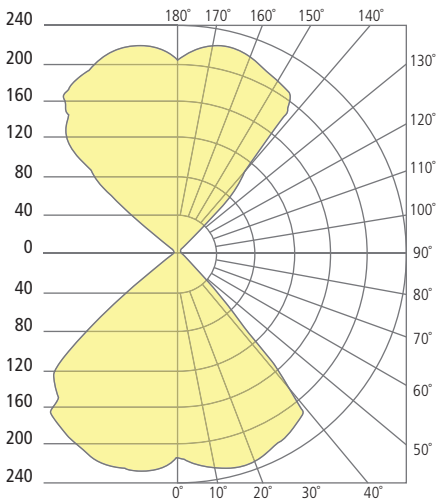
Vex

PHOTOMETRICS*

*For latest photometrics, please visit www.techlighting.com/OUTDOOR

VEX

Total Lumen Output: 554.3
 Total Power: 18.7
 Luminaire Efficacy: 29.6
 Color Temp: 3000K
 CRI: 90+
 BUG Rating: B0-U3-G0



PROJECT INFO

| FIXTURE TYPE & QUANTITY | JOB NAME & INFO | NOTES |
|-------------------------|-----------------|-------|
| | | |