

NQZ2-61TWTW-MPW

6" Quartz LED Downlight with Selectable Lumens & Selectable CCT

Source: 12W to 20W LED
1350lm to 2200lm

Type

Project

Catalog No.

Notes

PRODUCT DESCRIPTION

Quartz Series series is an architectural and commercial grade LED high lumen downlight. Each luminaire includes two tunable switches; Selectable Lumens allows the end user to determine the wattage input & Selectable CCT changes the color temperature appearance. Reflectors include two tension steel spring clips, which allow the luminaires to install without any frame-in or housing for an easy installation.

FEATURES

- Can-less installation (No frame-in or housing required)
- Easy installation for retrofit, remodel or new construction applications
- Selectable Lumen switch changes output from 1350lm to 2200lm
- Selectable CCT switch changes color temperature from 3000K / 3500K / 4000K
- Field changeable reflector allows for easy customization
- 120-277V input and 0-10V dimming
- 5-year limited warranty
- ENERGY STAR certified
- cULus Listed for Wet Locations

SPECIFICATION

Reflector: Aluminum spun reflector with deep set diffused lens for excellent visual comfort while providing high lumen output. Each reflector comes standard with matte powder white finish, optional snap-in reflectors are available and field changeable.

Tunable Switches: Each luminaire includes two switches on the top of the driver enclosure. Selectable Lumen switch changes the lumen output and wattage. Selectable CCT switch changes the color temperature.

Clearance: "IC" Insulated ceiling housings are direct contact rated. Not to be used in direct contact with spray foam insulation.

Mounting: No housing is required, two tensions steel spring clips accommodate ceiling thickness from 1/2" to 1-1/2". New construction frame-in can be ordered separately ([NQZ-6R-F](#)).

ELECTRICAL

Input Voltage: 120-277V

Lumens / Wattage: Selectable Lumens: 1350lm / 12W, 1850lm / 16W and 2200lm / 20W (*Note: Preset to 20W*)

Beam Spread: 94° Wide Flood

Color Temperature: Selectable CCT: 3000K / 3500K / 4000K (*Note: Preset to 3000K*)

Color Rendering Index: 90+CRI

Operating Temperature: 0°C - 40°C

Lifetime: 72,000 hours @ L70

Dimming: Dimmable down to 10% with 0-10V dimmer

[Click Here](#) or check complete dimmer list at www.NoraLighting.com in the "Compatibility" page under "Resources" tab

Emergency: Luminaire is compatible with [NEPK-20LEDUNV](#) (ordered separately). Battery operates luminaire at 20W for 90 minute emergency operation with a fully charged battery.

LABELS AND LISTINGS

- cETLus Listed for Wet Locations
- cETLus classified for retrofit installations
- ENERGY STAR certified
- [5-Year Limited Warranty](#)
- FCC compliant
- Certified to the high efficacy requirements of California Title 24 JA8-2022



Performance Data

CCT	12W	16W	20W
3000K	1354lm	1756lm	2079lm
3500K	1378lm	1894lm	2238lm
4000K	1333lm	1743lm	2045lm

Delivered lumens will vary depending on finish

PRODUCT IMAGES AND DIMENSIONS



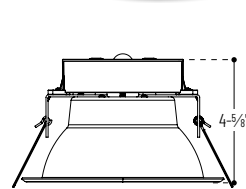
Selectable Lumens

Three position sliding switch
1350lm / 1850lm / 2200lm

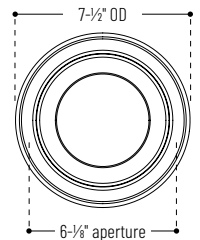


Selectable CCT

Three position sliding switch
3000K / 3500K / 4000K



Ceiling Cut-Out: 6-1/4" Ø



NQZ2-61TWTW-MPW / NQZ-61REFLC
6" Quartz with Specuar Clear Reflector Insert



NQZ2-61TWTW-MPW / NQZ-61REFLD
6" Quartz with Clear Diffused Reflector Insert



NQZ2-61TWTW-MPW / NQZ-61REFLHZ
6" Quartz with Haze Reflector Insert

6" Quartz LED Downlight with Selectable Lumens & Selectable CCT

Aperture	Lumens / Wattage / Color Temperature	Reflector / Flange Finish
NQZ2-61 = 6" Quartz	TWTW = 1350lm / 1850lm / 2200lm 3000K / 3500K / 4000K	-MPW = Matte Powder White

Optional Accessories

Description
NQZ-6R-F = 6" New Construction Frame-In
NQZ-61REFLC = 6" Specular Clear Snap-in Reflector Insert
NQZ-61REFLD = 6" Clear Diffused Snap-in Reflector Insert
NQZ-61REFLHZ = 6" Haze Snap-in Reflector Insert
NEPK-20LEDUNV = 20W Emergency Battery w/Remote Test Switch

Example: **NQZ2-61TWTW-MPW** = 6" Quartz LED Downlight with Selectable Lumens & Selectable CCT, Matte Powder White

NQZ2-61WTW-MPW

6" Quartz LED Downlight Accessories

Type	_____
Project	_____
Catalog No.	_____
Notes	_____



New Construction Frame-In Kit

NQZ-6R-F
For new construction pre-wiring and easier layout planning.



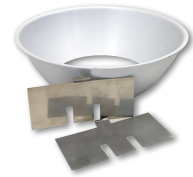
Specular Clear Reflector Insert

NQZ-61REFLC
Snap-in reflector is field changeable and fits over 6" Quartz downlight.



Diffused Clear Reflector Insert

NQZ-61REFLD
Snap-in reflector is field changeable and fits over 6" Quartz downlight.



Haze Reflector Insert

NQZ-61REFLHZ
Snap-in reflector is field changeable and fits over 6" Quartz downlight.



20W Emergency Battery with Remote Test Switch

NEPK-20LEDUNV
120-277V 20W emergency battery operates luminaire for 90 minute emergency operation with a fully charged battery. Requires 24 hours to for full charge.

PHOTOMETRICS

6" Quartz LED Downlight with Selectable Lumens & Selectable CCT

Type

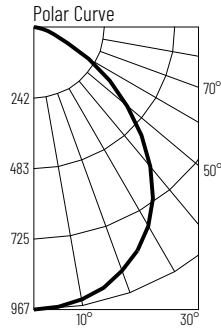
Project

Catalog No.

Notes

Test Information

Test Number: NTR1958R2
 Part Number: NQZ2-61TWTW-MPW
 Beam Spread: 94° Wide Flood
 Lumens: 2079lm
 Wattage: 20.07W
 Efficacy: 104lpw
 CCT / CRI: 3000K / 90 CRI
 Spacing Criteria (0°-180°): 1.22
 Spacing Criteria (90°-270°): 1.2



Illuminance at a Distance

Distance from Luminaire	FC at Nadir	Beam Diameter
6'	26.9fc	12'-11"
8'	15.1fc	17'-4"
10'	9.7fc	21'-7"
12'	6.7fc	25'-11"
14'	4.9fc	30'-2"

Zonal Lumen Summary

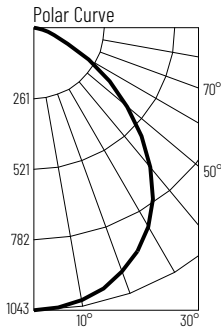
Zone	Lumens	% Luminaire
0-30	737	35.4
0-40	1180	56.8
0-60	1870	90
0-90	2079	100
90-180	0	0
0-180	2079	100

Candela Table

Vertical Angles	Candela
0	967
5	962
15	924
25	845
35	716
45	528

Test Information

Test Number: NTR1959R2
 Part Number: NQZ2-61TWTW-MPW
 Beam Spread: 94° Wide Flood
 Lumens: 2238lm
 Wattage: 19.13W
 Efficacy: 117lpw
 CCT / CRI: 3500K / 90 CRI
 Spacing Criteria (0°-180°): 1.22
 Spacing Criteria (90°-270°): 1.2



Illuminance at a Distance

Distance from Luminaire	FC at Nadir	Beam Diameter
6'	29fc	12'-11"
8'	16.3fc	17'-2"
10'	10.4fc	21'-6"
12'	7.2fc	25'-10"
14'	5.3fc	30'-1"

Zonal Lumen Summary

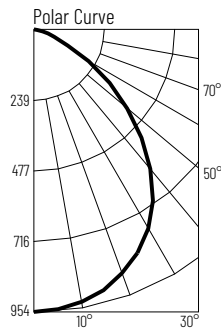
Zone	Lumens	% Luminaire
0-30	794	35.5
0-40	1272	56.8
0-60	2013	90
0-90	2238	100
90-180	0	0
0-180	2238	100

Candela Table

Vertical Angles	Candela
0	1043
5	1038
15	995
25	911
35	772
45	567

Test Information

Test Number: NTR1960R2
 Part Number: NQZ2-61TWTW-MPW
 Beam Spread: 94° Wide Flood
 Lumens: 2045lm
 Wattage: 19.89W
 Efficacy: 103lpw
 CCT / CRI: 4000K / 90 CRI
 Spacing Criteria (0°-180°): 1.22
 Spacing Criteria (90°-270°): 1.2



Illuminance at a Distance

Distance from Luminaire	FC at Nadir	Beam Diameter
6'	26.5fc	12'-10"
8'	14.9fc	17'-1"
10'	9.5fc	21'-5"
12'	6.6fc	25'-8"
14'	4.9fc	29'-11"

Zonal Lumen Summary

Zone	Lumens	% Luminaire
0-30	726	35.5
0-40	1162	56.8
0-60	1838	89.9
0-90	2045	100
90-180	0	0
0-180	2045	100

Candela Table

Vertical Angles	Candela
0	954
5	949
15	911
25	833
35	705
45	516

Lumen Output Multipliers

Wattage: 12W (0.64), 16W (0.85)