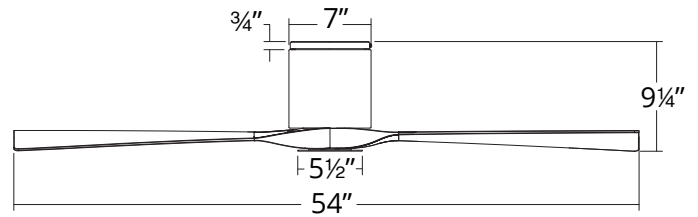


AVIATOR 5 FLUSH

FH-W1811-5

54" 5 Blade Flush Mount Fan

MODERN FORMS SMART FANS



PRODUCT DESCRIPTION

Inspired by the golden age of flying, this smart fan takes technology to the next level. Pair it with the exclusive Modern Forms app to save on energy costs and intuitively create schedules that adapt to your behavior. Two simulated wood finishes contrast with the matte black or graphite housings for an understated look in interior or exterior spaces. Available option LED luminaire kit sold separately.

FEATURES

- 6 fan speeds through both Summer and Winter Modes
- Silent DC motor
- Luminaire sold separate (F-1811-5-LED-**)
- Includes BT wall control
- Optional remote control with wall cradle sold separately
- Additional wall control for 3, 4-way control sold separately
- Compatible with Modern Forms app

AIRFLOW/ENERGY EFFICIENCY

Weighted-Average/High Airflow CFM:	5296/7822
Weighted-Average/High Energy Use (W):	20/27
Estimated Yearly Energy Cost (\$):	\$5.69
Weighted-Average/High Efficiency (CFM/W):	132/244
Max RPM:	170

ORDER NUMBER

Model	Housing	Blade
FH-W1811-5	GH Graphite	WG Weathered Gray DK Distressed Koa Matte Black
	MB Matte Black	
	MB Matte Black	

SPECIFICATIONS

Construction:	Aluminum/ABS
Blade:	13° Pitch, 54" sweep
Wire:	32"
Hanging Weight:	17 lbs
Total Power:	32W
Standards:	UL/cUL Wet Location listed, Title 24 JA8-2016 Compliant, Title 20, Energy Star rated
Motor Type:	125 x 20 sensorless DC motor

WIRELESS PERFORMANCE

Wi-Fi Range:	Up to 150 ft*
Bluetooth Range:	Up to 150 ft

OPTIONAL LUMINAIRE (Sold Separately)

Model	Finish	
F-1811-5-LED	GH Graphite	
	MB Matte Black	

Example: F-1811-5-LED-GH

Example: FH-W1811-5-GH/DK

- *Results may vary based on application and surroundings.
- *This fan comes uni-pack - blade select options are not available

The Modern Forms app synchronizes seamlessly with smart home devices you already own



modernforms.com
Phone (800) 526.2588
Fax (800) 526.2585

Headquarters/Eastern Distribution Center
44 Harbor Park Drive
Port Washington, NY 11050

Central Distribution Center
1600 Distribution Ct
Lithia Springs, GA 30122

Western Distribution Center
1750 Archibald Avenue
Ontario, CA 91760



AVIATOR 5 FLUSH

FH-W1811-5-54

54" Flush Mounted Fan

MODERN FORMS
SMART FANS

OPTIONAL ACCESSORIES

Bluetooth Wall Control	 <p>F-WCBT</p>	WT White	Control fan speed and light brightness, and switch between Summer and Winter Modes. Additional Wall Controls can be purchased separately for multiple location control.
Bluetooth Remote Control	 <p>F-RCBT</p>	WT White	Control fan speed and light brightness, and switch between Summer and Winter Modes. Compatible with Smart Fans. Includes easy-to-install wall cradle and batteries.

Examples: Wall Control - **F-WCBT-WT**, Remote Control - **F-RCBT-WT**