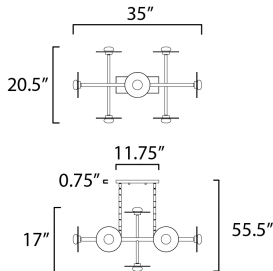




PRODUCT DESCRIPTION

Simplistic frames of Black terminate at machined fittings that support round Frost glass discs with a clear reveal on the outside edge. Satin White glass diffusers conceal LED boards which provide ample light with excellent color rendition.



MEASUREMENTS

DIMENSION : 20.5" L x 35" W x 17.5" H x 21" Ext
 MAX OAH : 55.75" OAH
 CANOPY : 4.5" W x 1.5" H x 11.75" L
 HANGING WEIGHT : 13.36 lb

LAMPING

INPUT VOLTAGE : 120V
 LUMENS : 3,040 Rated (2,370 Del.)
 BULB : 8 x 4W LED PCB Integrated , 32W Total
 BULB INCLUDED : (Integrated)
 DIMMABLE : Triac CL or ELV
 CRI : 90 CRI
 COLOR_TEMP : 3000K

FINISHES OPTION

 Black

GLASS

Frosted and Satin White FTSW

MATERIAL

Steel, Glass

RATINGS

cETLus
 Dry Location



ADDITIONAL

ADJUSTABLE
 SLOPE: 90
 RATED LIFE 35000 Hours
 OPERATING TEMPERATURE:
 -20°C (-4°F), 40°C (104°F)

Always consult a qualified electrician before installing any lighting product.



WESTERN DISTRIBUTION CENTER (HEADQUARTER)
 253 NORTH VINELAND AVE | CITY OF INDUSTRY, CA 91746
EASTERN DISTRIBUTION CENTER
 4200 SHIRLEY DR. | ATLANTA, GA 30336
 P. 626.956.4200 | F. 626.956.4225 | maximlighting.com