

P8061 Series

5" LED New Construction and Remodel • Wet Location



Specifications:

Description:

The P8061 is ideal for use in both new construction as well as remodel/retrofit. Light output is comparable to that of a typical 65W incandescent downlight, providing up to 75% energy savings. The P8061 is equipped with both Edison base adaptor and quick link connector allowing easy installation in many standard incandescent recessed housings.

Construction:

- Diffused polycarbonate lens controls direct glare from the LEDs
- Easy "Push and Twist" installation with (3) friction spring clips
- Can be installed in most competitors 5" recessed housings
- Dimmable to 10% with many electronic low voltage dimmers
- Suitable for use in IC or NON-IC Applications with 25°C (77°F) continuous room side ambient temperature.
- Provided with quick link for use with E26 Edison Base adapter

Performance:

Input Power	13W
Input Voltage	120V
Input Frequency	60Hz
Lumens/LPW	683/52 (LM-79) per module
CCT	3000K
CRI	90+
Life	60,000 (L70/TM-21)
EMI/RFI	FCC Title 47, Part 15, Class B
Min. Start Temp	-30° C
Max. Operating Temp	30° C
Warranty	5 yrs.
Labels	cCSAus classified for wet locations ENERGY STAR® qualified

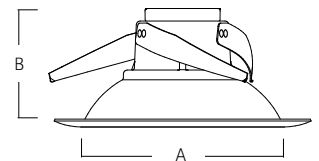
P8061-28/30K9-AC1-L06

Images:

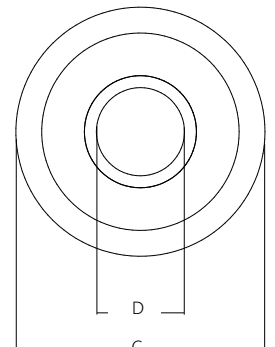


Dimensions:

A	B
4.5"	4"



C	D
6.2"	2.75"



Catalog number:

Base	Finish	Color Temp	CRI	Voltage	Lumen Package
P8061	20 - Bronze 28 - White 31 - Black 82 - Metallic Gray	30K - 3000K	9 - 90+	AC1 - 120V	L06 - 683 Lumens



P8061 Series

5" LED New Construction and Remodel • Wet Location

PROGRESS **LED**



Photometrics:

P8061-28/30K9-AC1-L06

P8061-28/30K9-AC1-L06

Dimming Notes:

P8061 is designed to be compatible with many Electronic Low Voltage (ELV-Reverse Phase) controls. LED rated dimmer controls may offer favorable dimming performance. The following is a partial list of known compatible dimmer controls:

Electronic Low Voltage ELV Reverse Phase Controls

Leviton	Renoir II	AWRMG-EAW
Lutron	Diva Series	(Part Number DVELV-300)
Lutron	Maestro Series	(Part Number MAELV-600)
Lutron	Nova T Series	(Part Number NTELV-300)
Lutron	Spacer Series	(Part Number SPSELV-600)
Lutron	Vierti Series	(Part Number VTELV-600)

LED Rated Controls

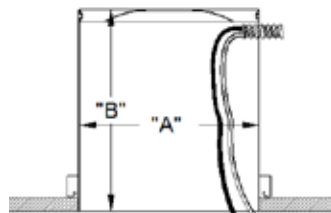
Pass & Seymour	(Part Number DCL453PTCCCV6)
----------------	-----------------------------

Incandescent Digital type dimmers are not recommended.
 Dimming capabilities will vary depending on the dimmer control, load, and circuit installation. Always refer to dimmer manufacturer instructions or a controls specialist for specific requirements.
 Dimmer control brand names where identified above are trade names or registered trademarks of each respective company.

Compatibility of 6" Recessed Housings:

The P8061's are cCSAus classified for use with Progress and most competitive recessed cans (with "A" and "B" dimensions) including:

- | | |
|---------------------|------------|
| Progress | |
| Capri | Lithonia |
| Commercial Electric | Nora |
| Halo | Sea Gull |
| Jimway | WAC |
| Juno | Prescolite |



"A" = 5 5/16 MIN. 6 1/5 MAX
 "B" = 5 1/2 MIN.

NOTES

1. Operation in ambient temperatures higher than those specified will shorten life.
2. Warranty is limited to repair and replacement of defective parts of the LED system and does not include labor or installation. 5 year warranty requires product registration. Contact Technical Support for details.