

# WAC LIGHTING

## 4" Low Voltage Die-Cast Gimbal Ring Trim

Model & Light Source	Lumens	Finish
HR-D417 Halogen MR16		BN Brushed Nickel
HR-D417LED LED MR16		WT White

Example: **HR-D417-BN**

### DESCRIPTION

Engineered for high-performance in a compact fixture, 4" Low Voltage Recessed Downlights are styled with form and function. Available for Non-IC installations, a variety of decorative adjustable and Wet Location trim options are available.

### FEATURES

- Accommodates most LED MR16 or Halogen MR16 lamps. Models with LED, includes LED MR16
- Center lamp holder allows lamp to be tilted up to 25° from vertical
- The supplied clear glass lens can be replaced with one lens accessory
- Steel spring clips secure trim to housing
- 5 year warranty

### SPECIFICATIONS

Construction:	Die-cast aluminum
Input:	12 VAC
Light Source:	LED MR16, Halogen MR16
Finish:	Electrostatically Powder Coated White, Electroplated Brushed Nickel
Standards:	UL, cUL, Damp Location Listed

Fixture Type: \_\_\_\_\_

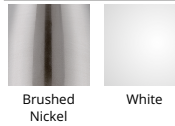
Catalog Number: \_\_\_\_\_

Project: \_\_\_\_\_

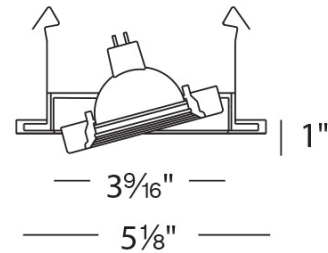
Location: \_\_\_\_\_



### FINISHES



### LINE DRAWING



Fixture Type: \_\_\_\_\_

Catalog Number: \_\_\_\_\_






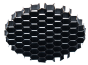
Project: \_\_\_\_\_

Location: \_\_\_\_\_

## 4" Low Voltage

Die-Cast Gimbal Ring Trim

### ACCESSORIES

	<i>Model</i>	<i>Description</i>	<i>Finish</i>
	<b>LENS-16-AMB</b> <b>LENS-16-BLU</b> <b>LENS-16-GRN</b> <b>LENS-16-RED</b>	<i>Colored Lens</i> <i>Colored Lens</i> <i>Colored Lens</i> <i>Colored Lens</i>	<i>Amber</i> <i>Blue</i> <i>Green</i> <i>Red</i>
	<b>LENS-16-FR</b>	<i>Clear/Frosted Lens</i>	<i>Frosted</i>
	<b>LENS-16-SPR</b>	<i>Spread Lens</i>	<i>Spread Lens</i>
	<b>LENS-16-UVF</b>	<i>UV Filter lens</i>	<i>Clear</i>
	<b>LENS-16-BEL</b>	<i>Beam Elongating Lens</i>	<i>Beam Elongating</i>
	<b>LENS-16-HCL</b>	<i>Honeycomb Louver</i>	<i>Black</i>

# WAC LIGHTING

## 4" Low Voltage Remodel Non-IC Housing

### Model & Product

HR-8401E 4in Electronic Low Voltage Remodel Non-IC Housing

Example: **HR-8401E**

### DESCRIPTION

Engineered for high-performance in a compact fixture, 4" Low Voltage Recessed Downlights are styled with form and function. Available with a variety of decorative adjustable and wet location trim options are available.

### FEATURES

- Integral electronic transformer
- J-Box and transformer accessible through ceiling
- Advanced auto-reset, soft start and short circuit protection features
- Supplied thermal protector protects against over-lamping
- Suitable for 2" 6" joist installations, for use in shallow applications
- Transformer included
- 5 year warranty

### SPECIFICATIONS

Construction:	20 gauge galvanized steel
Power:	50W
Input:	120 VAC, 50/60Hz
Dimming:	ELV: 100-10%
Light Source:	Halogen
Mounting:	Two heavy gauge inner retention clips push out onto ceiling or other mounting surface to firmly hold housing in place
Cut Out:	4 9/16"
Ceiling Thickness:	3/4"
Operating Temp:	-4°F to 104°F (-20°C to 40°C)
Standards:	UL, cUL, Damp Location Listed, Non IC

Fixture Type: \_\_\_\_\_

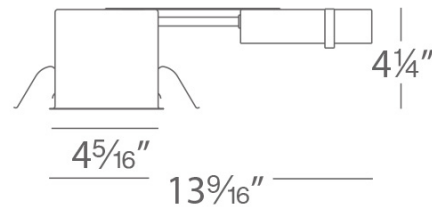
Catalog Number: \_\_\_\_\_

Project: \_\_\_\_\_

Location: \_\_\_\_\_



### LINE DRAWING



# WAC LIGHTING

## 4" Low Voltage

### New Construction Non-IC Housing

#### Model & Product

HR-8402E 4in Electronic Low Voltage New Construction Non-IC Housing

Example: **HR-8402E**

#### DESCRIPTION

Engineered for high-performance in a compact fixture, 4" Low Voltage Recessed Downlights are styled with form and function. Available with a variety of decorative adjustable and Wet Location trim options are available.

#### FEATURES

- Integral electronic transformer
- J-Box and transformer accessible through ceiling
- Advanced auto-reset, soft start and short circuit protection features
- Supplied thermal protector protects against over-lamping
- Transformer included
- 5 year warranty

#### SPECIFICATIONS

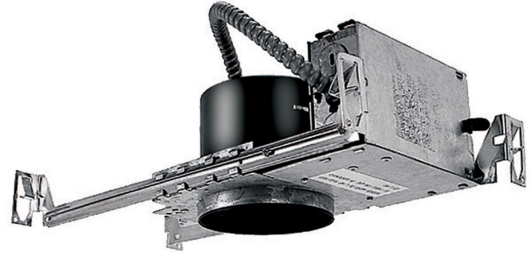
Construction:	20 gauge galvanized steel
Power:	50W
Input:	120 VAC, 50/60Hz
Dimming:	ELV: 100-10%
Light Source:	Halogen
Mounting:	Supplied with hanger bars, adjustable from 15"-242" to accommodate various joist construction and grid sizes.
Cut Out:	4 9/16"
Ceiling Thickness:	3/4"
Operating Temp:	-4°F to 104°F (-20°C to 40°C)
Standards:	UL, cUL, Damp Location Listed, Non IC

Fixture Type: \_\_\_\_\_

Catalog Number: \_\_\_\_\_

Project: \_\_\_\_\_

Location: \_\_\_\_\_



#### LINE DRAWING

