

In dramatic contrast to the die-cast metal body, two symmetrical reveals cut from a solid piece of optically pure acrylic adorn the top and bottom of the Voto wall sconce. Beautiful LED light pours from the top and bottom of the thick-cut acrylic to provide ample illumination. Also available as a downlight or uplight to meet the needs of all outdoor applications.

High quality LM80-tested LEDs

for consistent long-life performance and color

Outstanding protection against the elements:

- Powder coat finishes
- Stainless Steel mounting hardware
- Impact-resistant, UV stabilized frosted acrylic lensing

Up light and down light option

SPECIFICATIONS

DELIVERED LUMENS	909.1 Up-Downlight / 538.2 Downlight
WATTS	19.9 Up-Downlight / 11.5 Downlight
VOLTAGE	Universal 120-277V, with integral transient 2.5kV surge protection (driver)
DIMMING	0-10, ELV
LIGHT DISTRIBUTION	Symmetric Up/Down Lighting, or Down Only
MOUNTING OPTIONS	Wall
PERFORMANCE OPTIONS	Surge Protector
CCT	2700K, 3000K or 4000K
CRI	80+
COLOR BINNING	3 Step
BUG RATING	Up-Downlight B0-U3-G1 / Downlight B0-U2-G0
DARK SKY	Compliant (Downlight)
WET LISTED	IP65
GENERAL LISTING	ETL
CALIFORNIA TITLE 24	Can be used to comply with CEC 2016 Title 24 Part 6 for outdoor use. Registration with CEC Appliance Database not required.
START TEMP	-30°C
FIELD SERVICEABLE LED	Yes
CONSTRUCTION	Aluminum
HARDWARE	Stainless Steel
FINISH	Powder Coat
LED LIFETIME	L70; 70,000 Hours
WARRANTY*	5 Years
WEIGHT	7.2 lbs.

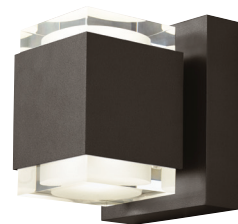
* Visit techlighting.com for specific warranty limitations and details.



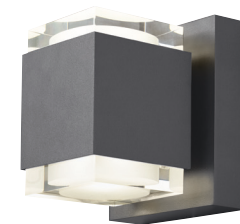
VOTO 6, DOWN ONLY
shown in bronze



VOTO 6, DOWN ONLY
shown in charcoal



VOTO 6, UP/DOWN
shown in bronze



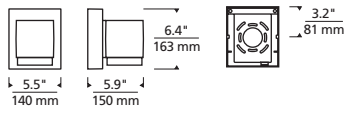
VOTO 6, UP/DOWN
shown in charcoal

ORDERING INFORMATION

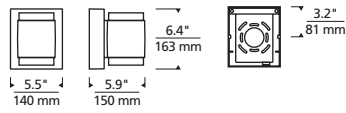
7000WVOT	CRI/CCT	LENGTH	FINISH	FUNCTION*	VOLTAGE	DISTRIBUTION	OPTIONS
827	80 CRI, 2700K	6 6"	Z BRONZE	DO DOWNLIGHT ONLY	UNV 120V-277V	S SYMMETRIC	NONE
830	80 CRI, 3000K		H CHARCOAL	UD UPLIGHT /DOWNLIGHT			SP SURGE PROTECTION
840	80 CRI, 4000K						

*DOWNLIGHT - 9W/850 LUMENS; UP & DOWNLIGHT - 18W/1500 LUMENS

VOTO 6 WALL SCENCE



Voto Small, Down Only



Voto Small, Up/Down

PHOTOMETRICS*

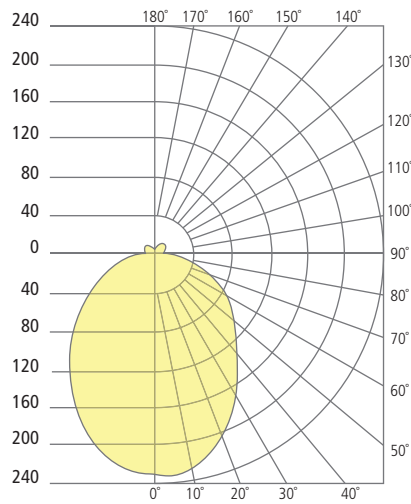
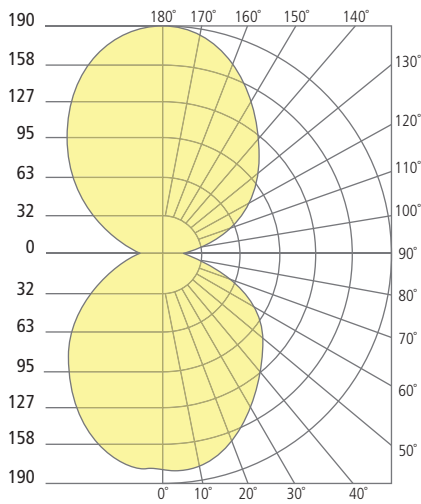
*For latest photometrics, please visit www.techlighting.com/OUTDOOR

VOTO 6 UP/DOWN

Total Lumen Output: 909
 Total Power: 19.9
 Luminaire Efficacy: 45.6
 Color Temp: 4000K
 CRI: 80+
 BUG Rating: B0-U3-G1

VOTO 6 DOWN

Total Lumen Output: 538.2
 Total Power: 11.5
 Luminaire Efficacy: 46.6
 Color Temp: 4000K
 CRI: 80+
 BUG Rating: B0-U2-G0



PROJECT INFO

FIXTURE TYPE & QUANTITY

JOB NAME & INFO

NOTES

