

# PALMA

## 54152HB

### SMALL TWO LIGHT VANITY

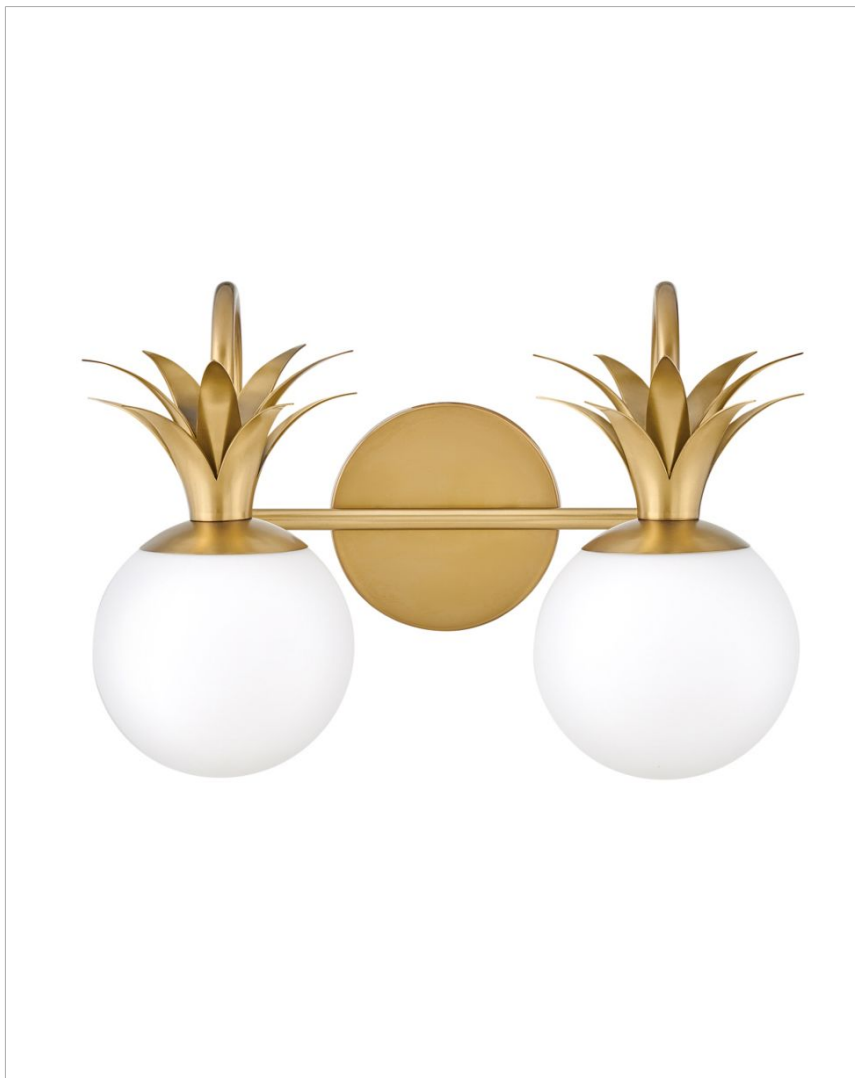
Palma charmingly blends European elegance with timeless touches of the classic pineapple motif. Sophisticated and modern, Palma is infused with a dash of Old World glamour. This enduring design creates a balanced sensation of both refinement and ease as part of overall appeal.

DETAILS	
FINISH:	Heritage Brass
MATERIAL:	Steel
GLASS:	Etched Opal
DIMMABLE:	YES, WITH DIMMABLE LAMP (NOT INCLUDED)

DIMENSIONS	
WIDTH:	14.8"
HEIGHT:	10.5"
WEIGHT:	4lb
BACK PLATE:	5" Dia.
EXTENSION:	8"
TOP TO OUTLET:	5.25"

LIGHT SOURCE	
LIGHT SOURCE:	Socketed
WATTAGE:	2-60w G9 LED
VOLTAGE:	120v

SHIPPING	
CARTON LENGTH:	18
CARTON WIDTH:	10.5
CARTON HEIGHT:	17.3
CARTON WEIGHT:	6.6



#### PRODUCT DETAILS:

- Fixture can be mounted either up or down
- Suitable for use in damp locations as defined by NEC and CEC. Meets United States UL Underwriters Laboratories & CSA Canadian Standards Association Product Safety Standards.
- For LED lamping, a 4.5w G9 LED bulb is recommended: EG9L-4.5-27 (not included).
- Merging the best of traditional and modern elements with a sophisticated and streamlined look