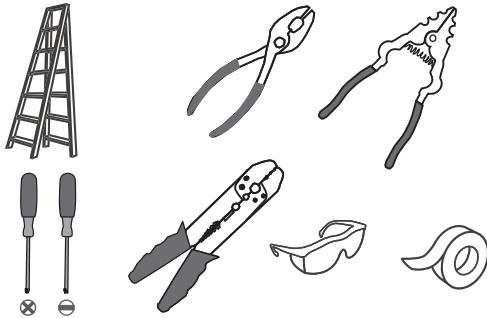
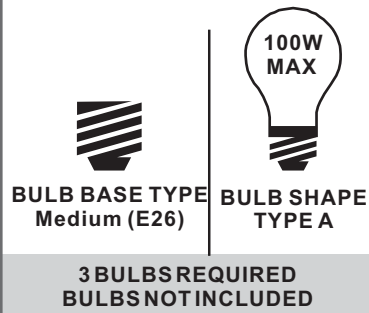


Tools Required



Light Source



**Fixture Height Adjustable
26.5" to 75.75"**

Warnings and Cautions

Turn off the electricity at the circuit breaker before installation. Consult a licensed electrician if in doubt about installation.

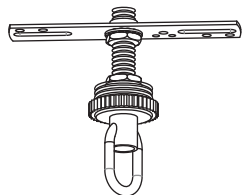
Turn off power to the fixture and allow the bulbs to cool before replacing.

Package Contents

Preparation: Identify and inspect all parts before beginning the installation.

Missing or damaged parts? Contact your original place of purchase.

PARTS BAG



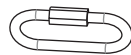
A Crossbar Assembly x 1



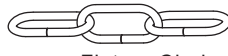
B Outlet Box Screw x 2



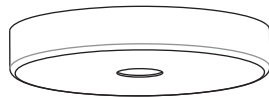
C Wire Connector x 3



D Quick Link x 2



E Fixture Chain x 1



F Ceiling Canopy x 1



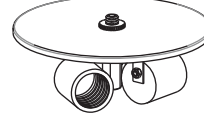
G Fixture Loop x 1



H Rod x 2



I Center Column x 1



J Socket Assembly x 1



K Stem with Hex Nuts



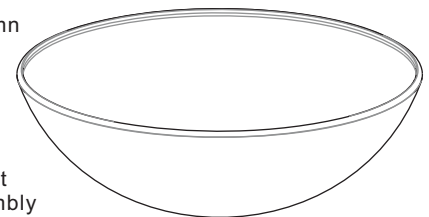
L Hex Nut x 1



M Flat Washer x 2



N Rubber Washer x 2



O Shade x 1



P Shade Holder x 1



Q Cap x 1



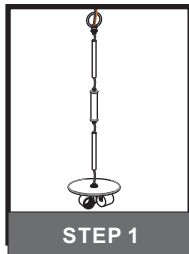
R Check Ring x 1



S Finial x 1

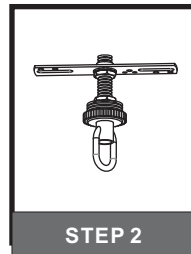
Table of Contents

Socket Assembly, Rods & Fixture Loop



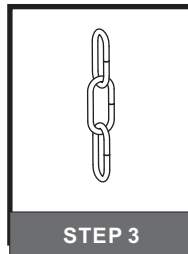
STEP 1

Crossbar Assembly



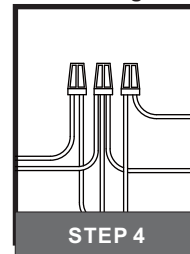
STEP 2

Fixture Chain

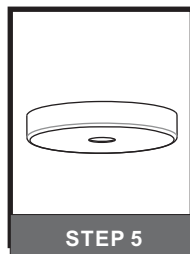


STEP 3

Wiring

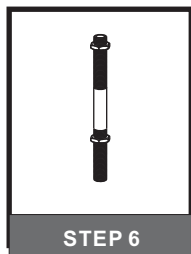


STEP 4



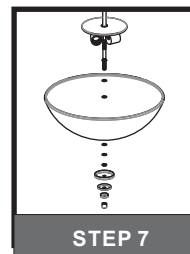
STEP 5

Ceiling Canopy



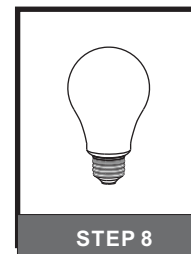
STEP 6

Stem & Hex Nuts



STEP 7

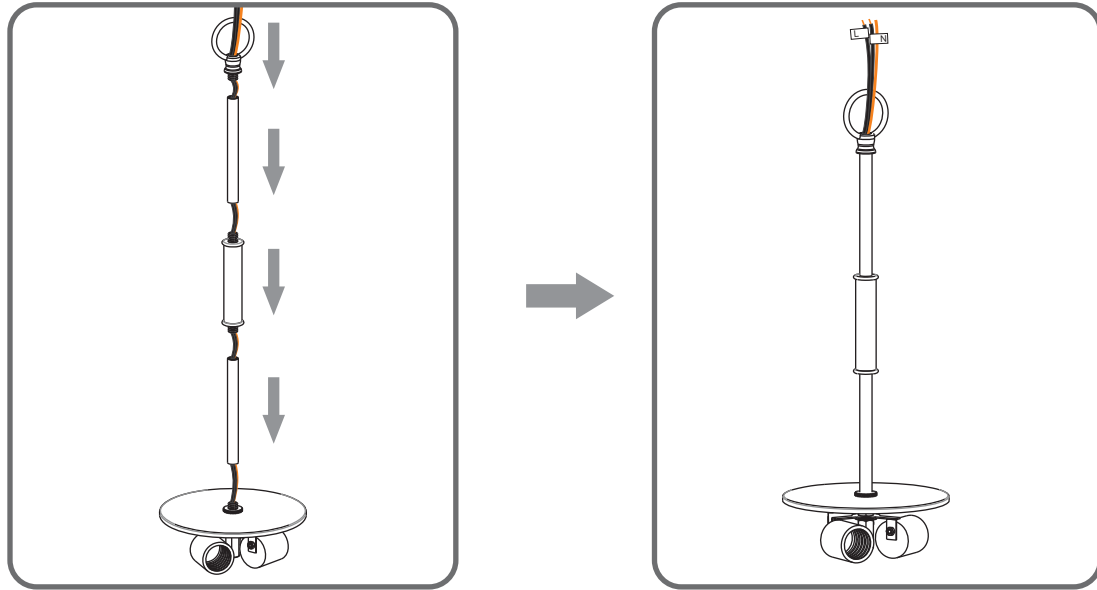
Shade & Cap



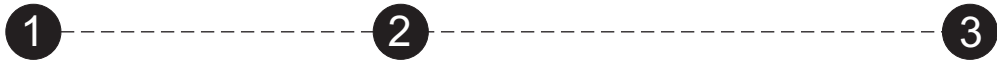
STEP 8

Bulbs

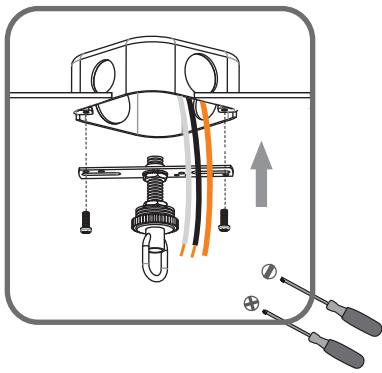
STEP 1



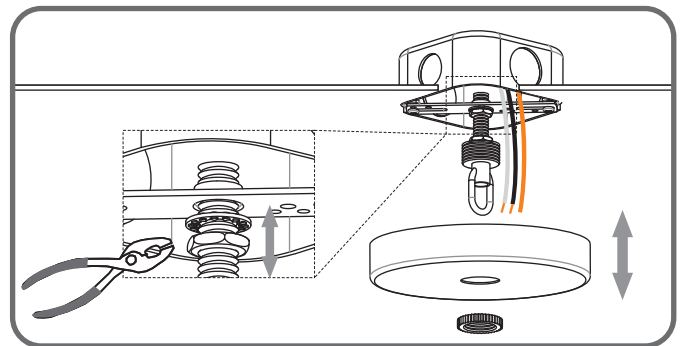
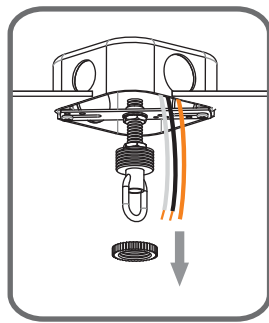
STEP 2



Step 1
Install crossbar assembly



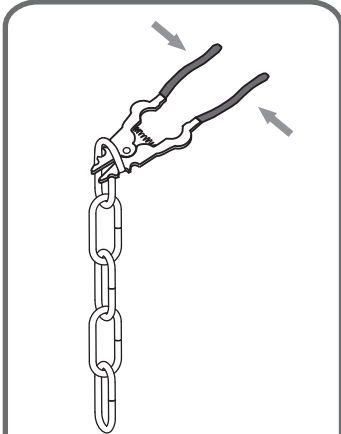
Step 2 - 3
Test fitting ceiling canopy to nipple



STEP 3

1

Step 1
Adjust fixture chain length

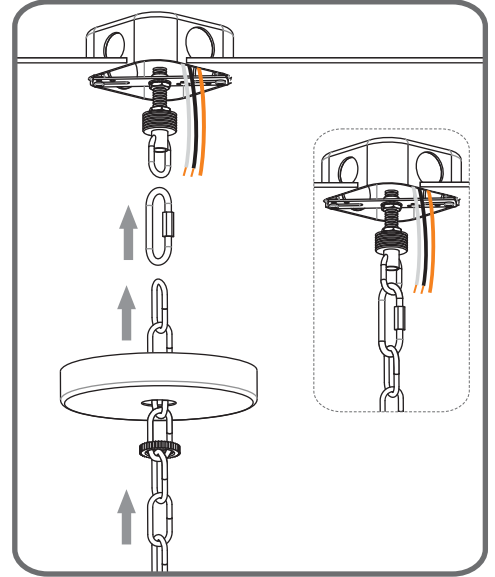
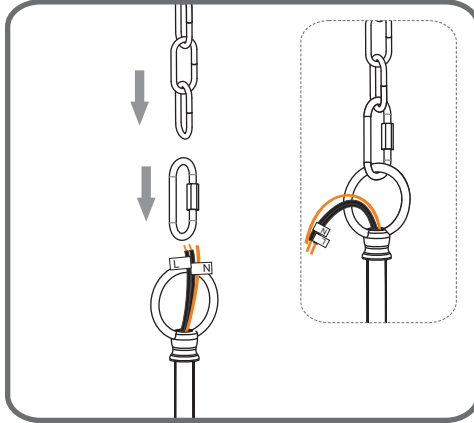


Suggested Chain Length:

- 8' ceiling: 9.5" Chain
- 9' ceiling: 20.5" Chain
- 10' ceiling: 31.5" Chain

2

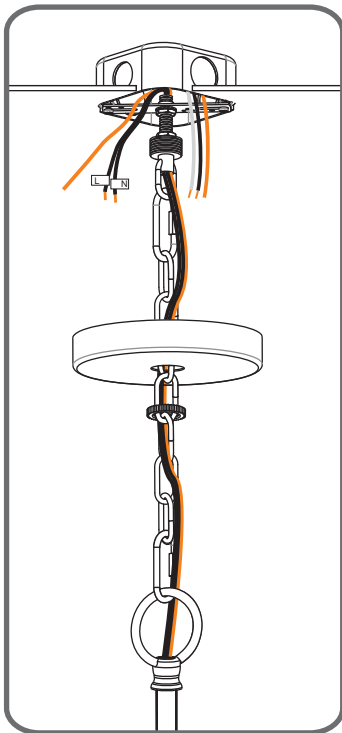
Step 2 - 3
Install Fixture Chain



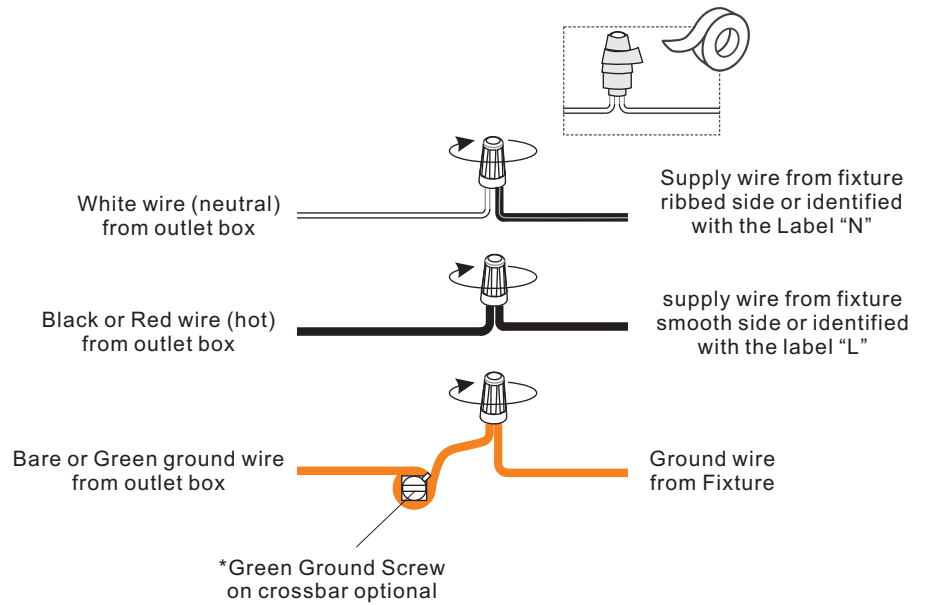
STEP 4

1

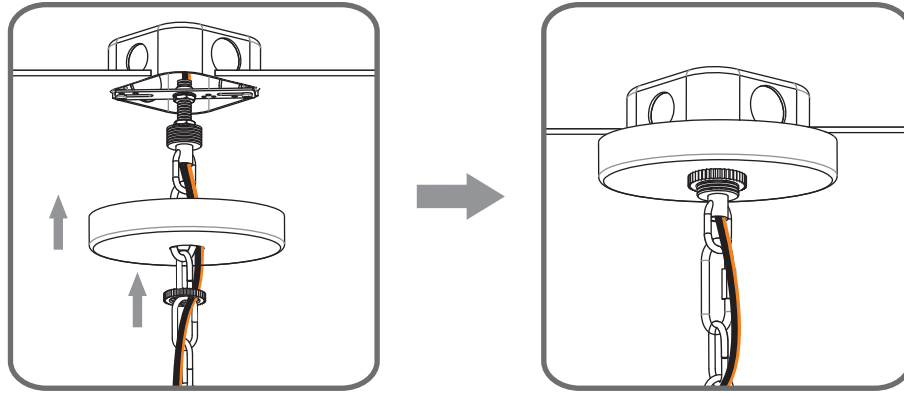
Step 1
Feed the fixture wires
through the loop



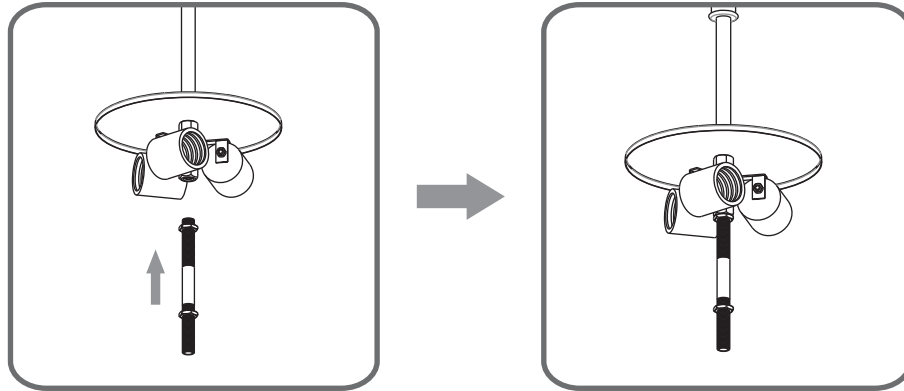
2



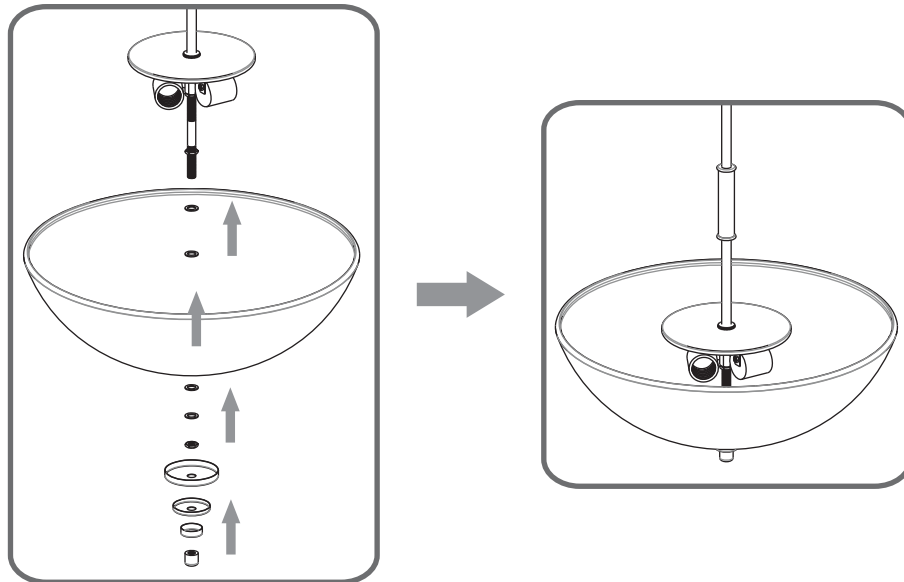
STEP 5



STEP 6



STEP 7



STEP 8

