

# CRYSTORAMA

LIGHTING THE WAY FOR SIXTY YEARS



Crystorama.com

## ASSEMBLY INSTRUCTION MODEL #OMN-3006-AG



All electrical components must be installed by a licensed electrician in accordance with the National Electric Code and the appropriate local electrical codes.



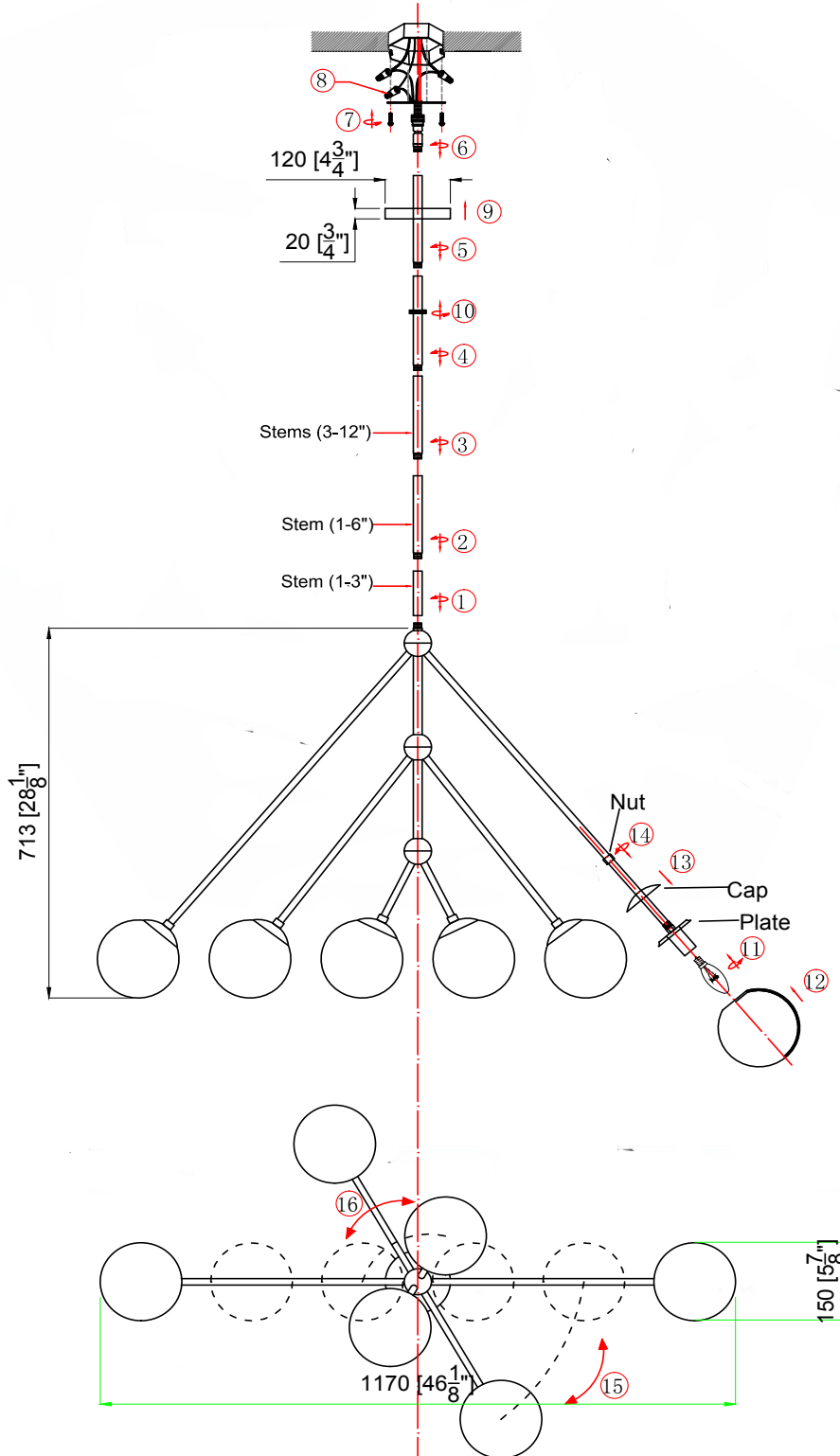
You will need 6 Candelabra Base Bulb  
40 Watts Recommended 60 Watts Max.  
**USE LED BULBS FOR EXTENDED USE (This fixture is Dry rated)**

### How to Install

1. Please place the fixture parts on a soft-cloth covered platform before installation. Do not remove the packaging on the arms until after installation is completed.
2. Determine the preferred hanging height and choose the stems needed.
3. Pass the wire through the stems and attach the stems together as illustrated.
4. Pass the screw collar ring and canopy over the stem assembly. Attach one end of the stem assembly onto the fixture body and the other end onto the swivel.
5. Raise the fixture up to the ceiling and do the wire connections. Raise the canopy up to the ceiling and secure with the screw collar loop.
6. Loosen the nut to release the cap. Move the Cap up along the arm towards the center of the fixture. Place the glass over the socket until the plate is inside. Gently lean the glass against the plate and move it around until the edges line up evenly with the plate. Re-tighten the nut securing everything in place.
7. Adjust the arm to the desired angle.

### How to replace the bulb:

Loosen the nut to release the cap. Move the Cap up along the arm towards the center of the fixture. Remove the light bulb and replace with a new bulb. Place the glass over the socket until the plate is inside. Gently lean the glass against the plate and move it around until the edges line up evenly with the plate. Re-tighten the nut securing everything in place.



**WARNING:** This product can expose you to Lead, which is known to the State of California to cause cancer and/or birth defects or reproductive harm. For more information go to [www.P65Warnings.ca.gov](http://www.P65Warnings.ca.gov)



**PART NUMBER** MODEL OMN-3006-AG

## Part Number

### Part Numbers

- A. (1)-Mounting Hardware
- B. (1)-Canopy;  $\varnothing 4.7 \times H$   
3/4" (XBN3006AGCAN4.7IN)
- C. C. (1)-Screw Collar Loop
- D. (1)-Swivel
- E. (1)-Stems; 3" (XBN3006AGSTEM3IN)
- F. (1)-Stems; 6" (XBN3006AGSTEM6IN)
- G. (3)-Stems; 12" (XBN3006AGSTEM12IN) H.  
(6)-Glass shade D6"  
(XBN3006AGSHA6IN)

