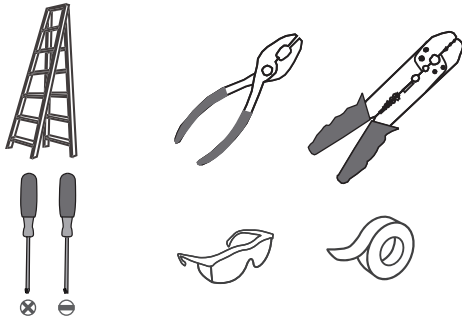
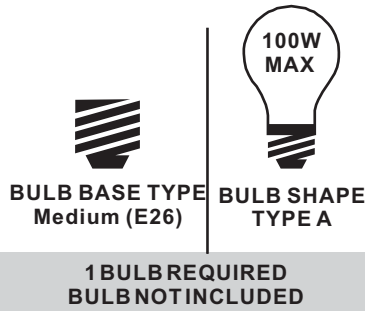


**Tools Required**



**Light Source**



**Fixture Height Adjustable  
13.5" to 99.5"**

**⚠ Warnings and Cautions**

Turn off the electricity at the circuit breaker before installation. Consult a licensed electrician if in doubt about installation.

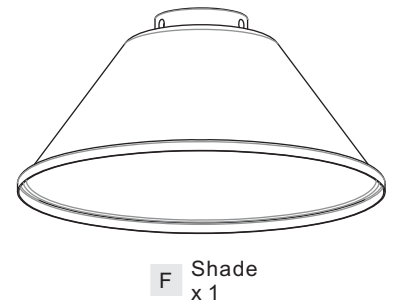
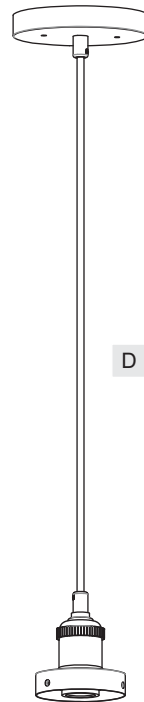
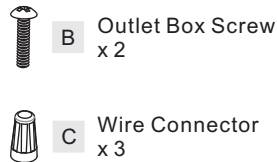
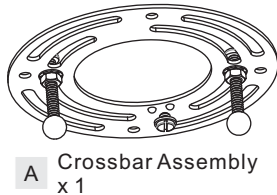
Turn off power to the fixture and allow the bulbs to cool before replacing.

**Package Contents**

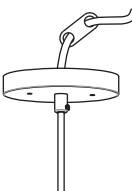

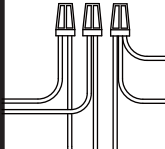
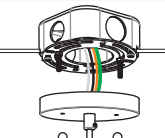


**Preparation:** Identify and inspect all parts before beginning the installation.

Missing or damaged parts? Contact your original place of purchase.

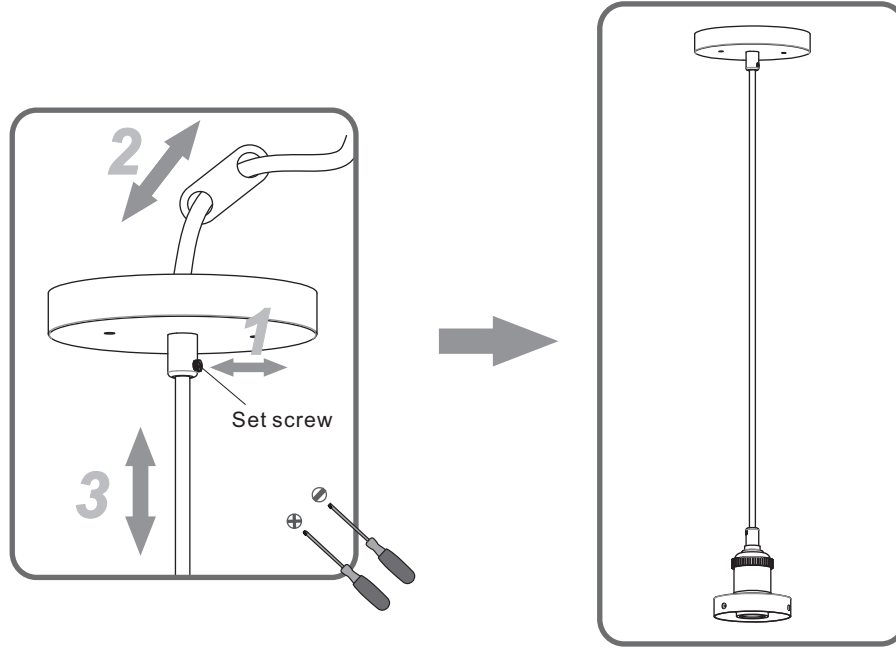
**PARTS BAG**



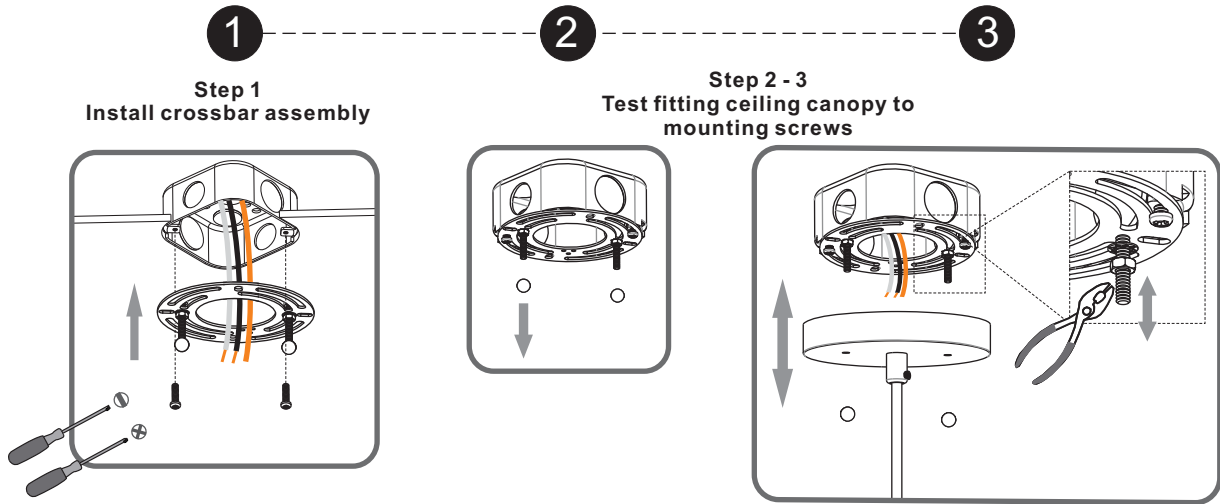
**Table of Contents**

Adjust Cord	Crossbar	Wiring	Ceiling Canopy	Shade	Bulb
					
<b>STEP 1</b>	<b>STEP 2</b>	<b>STEP 3</b>	<b>STEP 4</b>	<b>STEP 5</b>	<b>STEP 6</b>

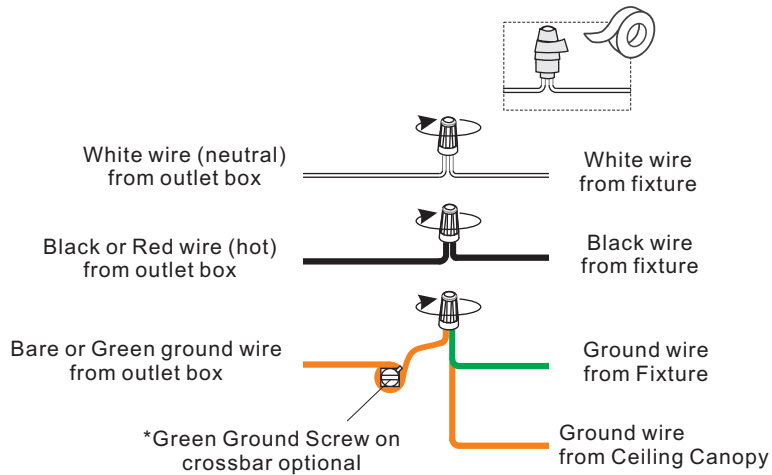
# STEP 1



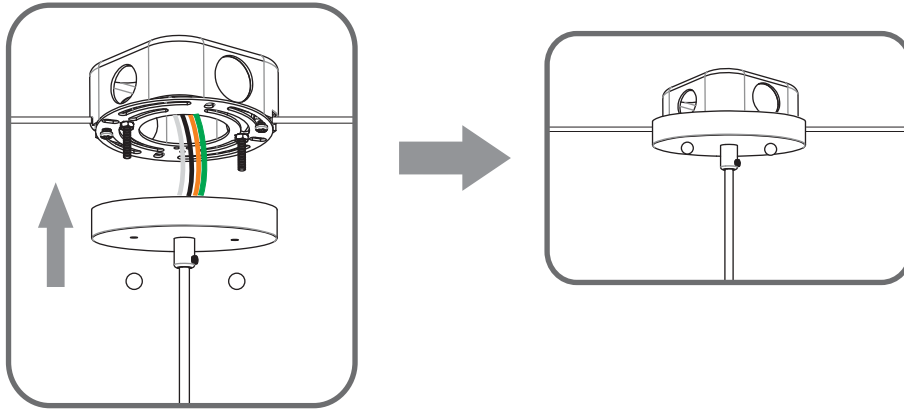
# STEP 2



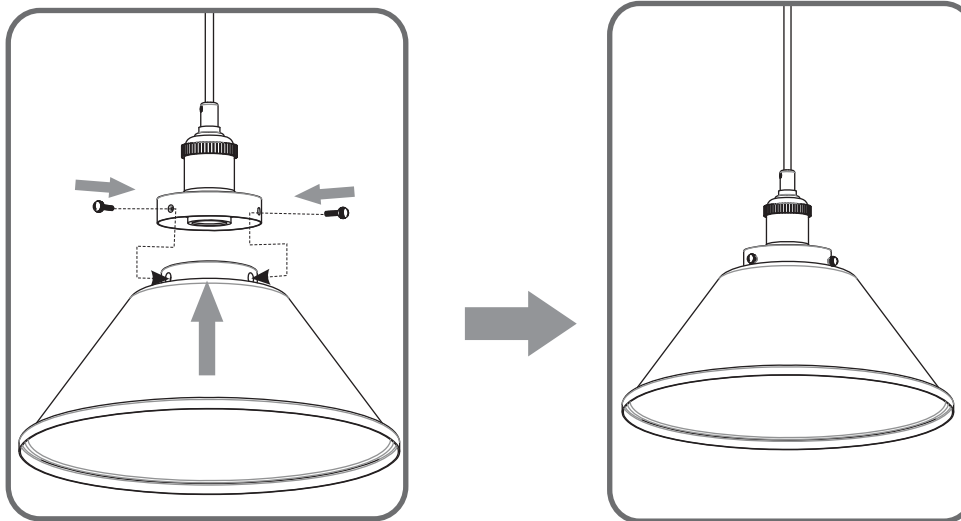
# STEP 3



**STEP 4**



**STEP 5**



**STEP 6**

