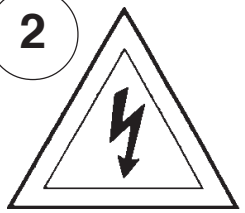


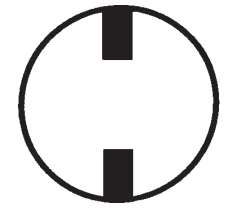
Instructions for electrician
STEPS 2 - 9

WARNING:

2

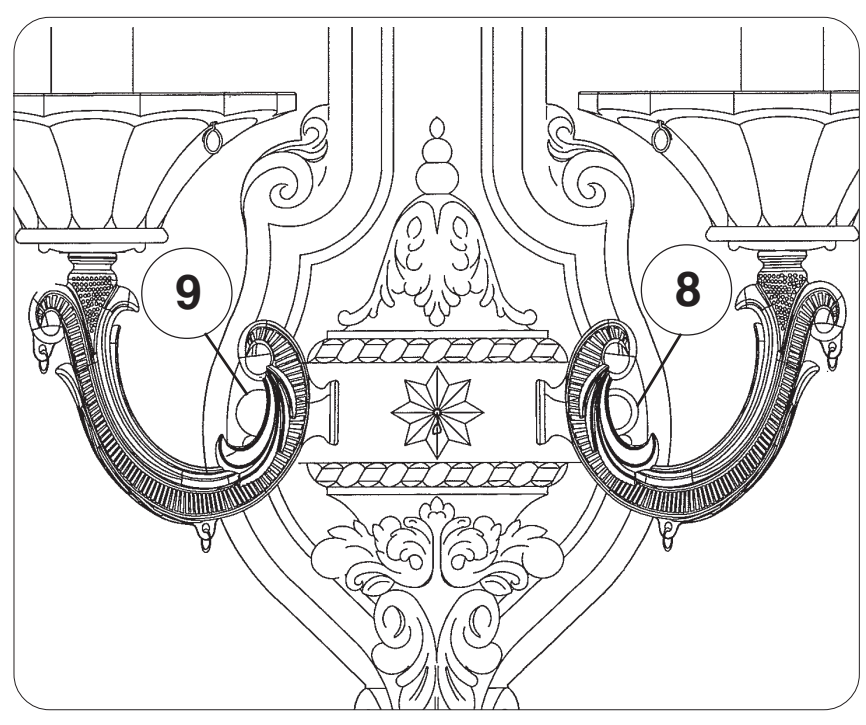
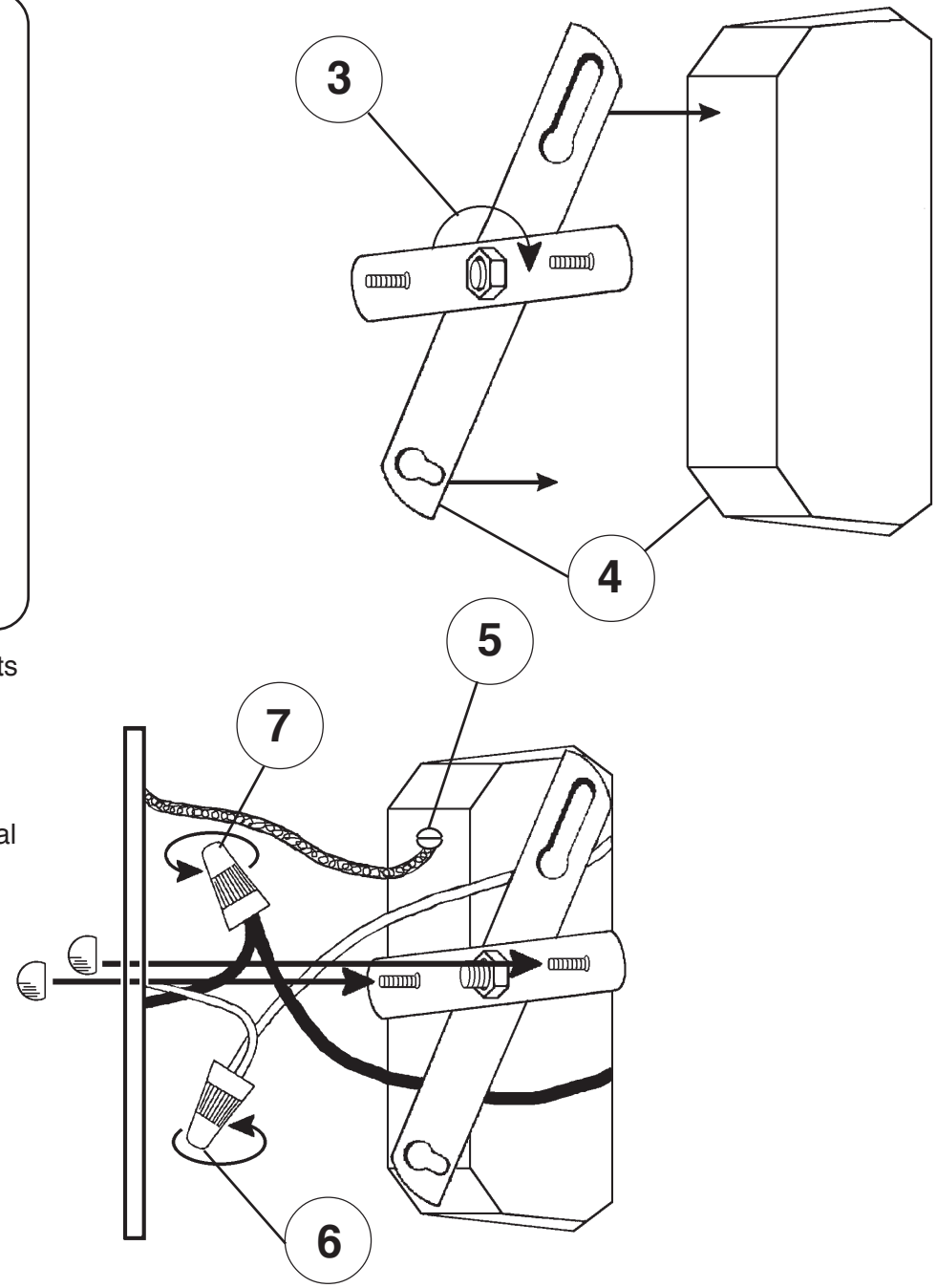


Electrical Danger



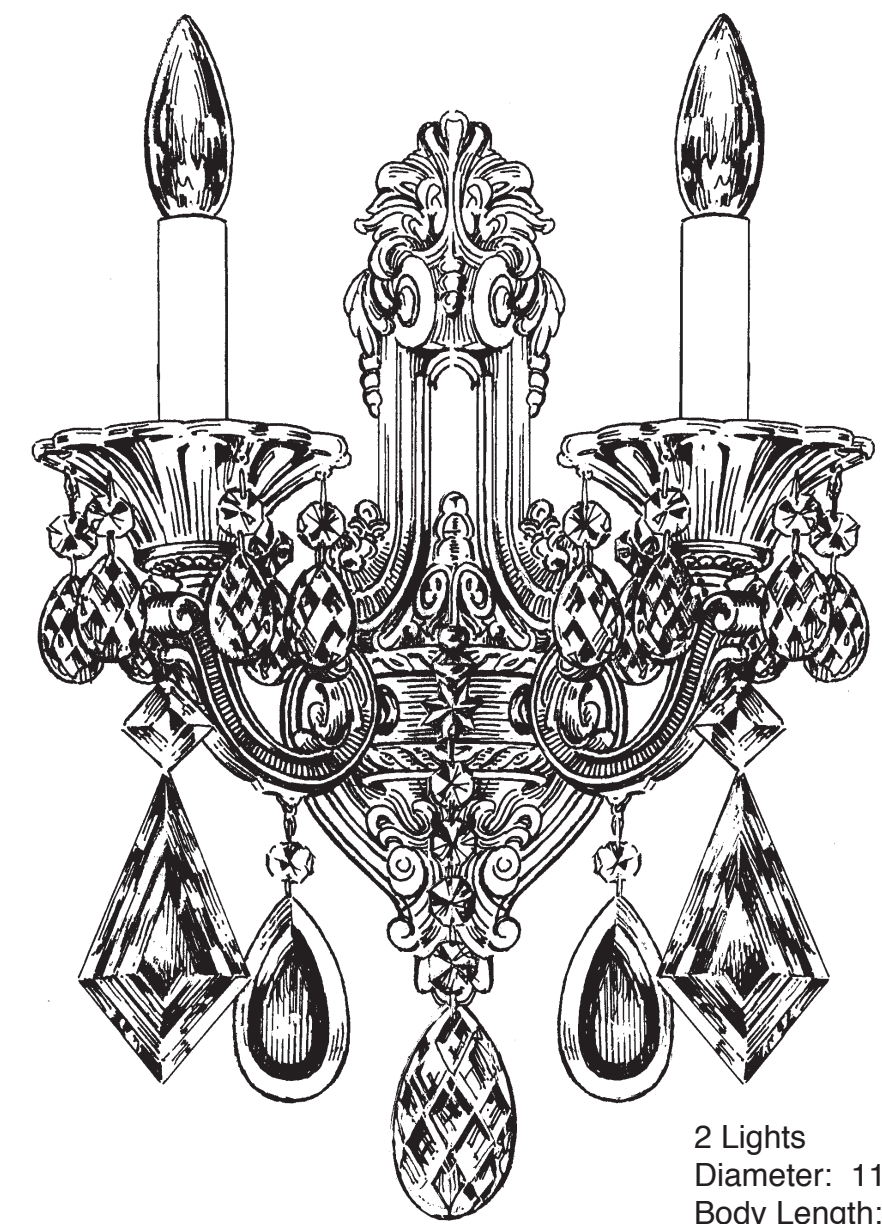
Turn Power Off

All electrical components must be installed by a licensed electrician in accordance with the National Electric Code and the appropriate local electrical codes.



CHANDELIER 5070- ____ TRIM DIAGRAM

(Finish Option)



2 Lights
Diameter: 11-1/2"
Body Length: 16-1/2"
Extension: 6-1/2"
Hanging Weight: 4-1/2 pounds

THIS DESIGN IS THE PROPRIETARY TRADE DRESS/TRADE MARK OF SCHONBEK WORLDWIDE LIGHTING INC.

SCHONBEK[®]

See diagram on back page
Follow steps in exact order
Save this trim diagram for future reference

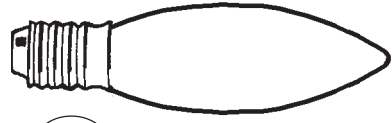
1 **IMPORTANT**
Person who opens carton should record the following information for future service.

CODE #	_____	Four-digit number on outside of carton.
PACKER #	_____	See crystal package label.
ORDER #	_____	See crystal package label.



Instructions for crystal trimming

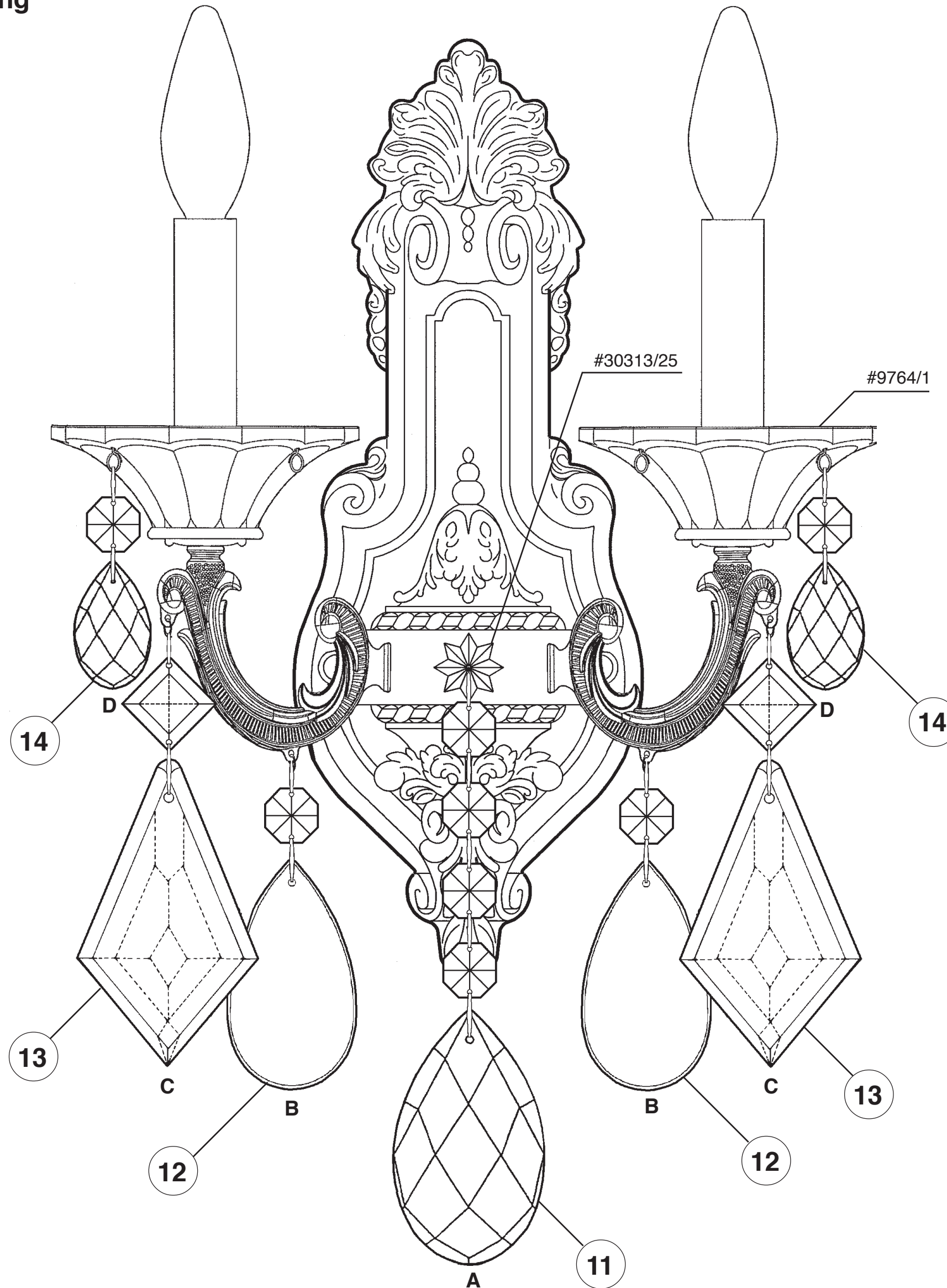
STEPS 10 - 14



10

You will need 2 - B10
25 Watts Recommended
60 Watts Max

Install bulbs and be
sure to test fixture
BEFORE trimming.



**HANG
CRYSTAL
WITH FLAT
SIDE FACING
FRONT**

