

OCULARC – model: 7011

H/L/J Track Luminaire

WAC LIGHTING

Responsible Lighting®

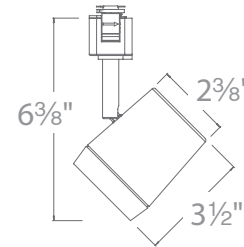


Fixture Type:

Catalog Number:

Project: _____

Location: _____



PRODUCT DESCRIPTION

Ideal for residential spaces and lower-mounted commercial applications, the OCULARC 7011 combines high-output COB LED with easy-to-use films for three separate beam-spreads, along with an adjustable base to accommodate a variety of user preferences. With the driver and thermal/optical management encased in the die-casting housing, this compact unit offers a clean, efficient, versatile design that works with almost any décor.

FEATURES

• **3 beam angle options included:**

- 50° beam film pre-installed, interchangeable 30° film supplied, remove film for 17° spot beam
- Integral driver and high output COB LED
- Outperforms halogen 65W MR16
- 350° horizontal and 90° vertical aiming
- 50,000 rated life
- 5 year warranty

REPLACEMENT OPTICS

17° Spot TIR Lens	TIR-CLM9-OD50-S
30° Narrow Flood Film	FILM-16-N
50° Flood Film	FILM-16-F

SPECIFICATIONS

Construction: Die-cast aluminum with baffled front cover for glare control

Input Power: 11W at 120VAC, 50/60Hz

Power Factor: 0.98

THD(A): < 20% Total Harmonic Distortion (Current)

Light Source: High output 3 Step Mac Adam, Ellipse COB, 90+ CRI
Rated Life of 50,000 hours at L70

Dimming: ELV or Forward Phase: 100 - 10%
Reference dimming report for compatibility.

Standards: ETL & cETL Dry Location Listed, Energy Star® 2.0,
Title 24 JA8-2016 Compliant

Finish: Electrostatically powder coated Black, Dark Bronze, and White

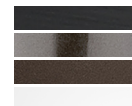
Operating Temperature: -4°F to 104°F (-20°C to 40°C)

EXTENSION OPTIONS

Sold Separately. Ceiling Mount and H-Track compatible only

H H Track	18 18"	BK Black
	24 24"	BN Brushed Nickel
	36 36"	DB Dark Bronze
	48 48"	WT White

System	Model	Beam	Max Lumens	Max CBCP	Color Temp	CRI	T24	Energy Star	Finish
H H Track	7011	17°	890	4972	930 3000K	90	Yes	Yes	BK Black
L L Track		30°	855	1961					BN Brushed Nickel
J J/J2 Track		50°	830	789					DB Dark Bronze
									WT White



-7011-930-

Example: **H-7011-930-BN**

wacighting.com

Phone (800) 526.2588
Fax (800) 526.2585

Headquarters/Eastern Distribution Center

44 Harbor Park Drive
Port Washington, NY 11050

Central Distribution Center

1600 Distribution Ct
Lithia Springs, GA 30122

Western Distribution Center

1750 Archibald Avenue
Ontario, CA 91760