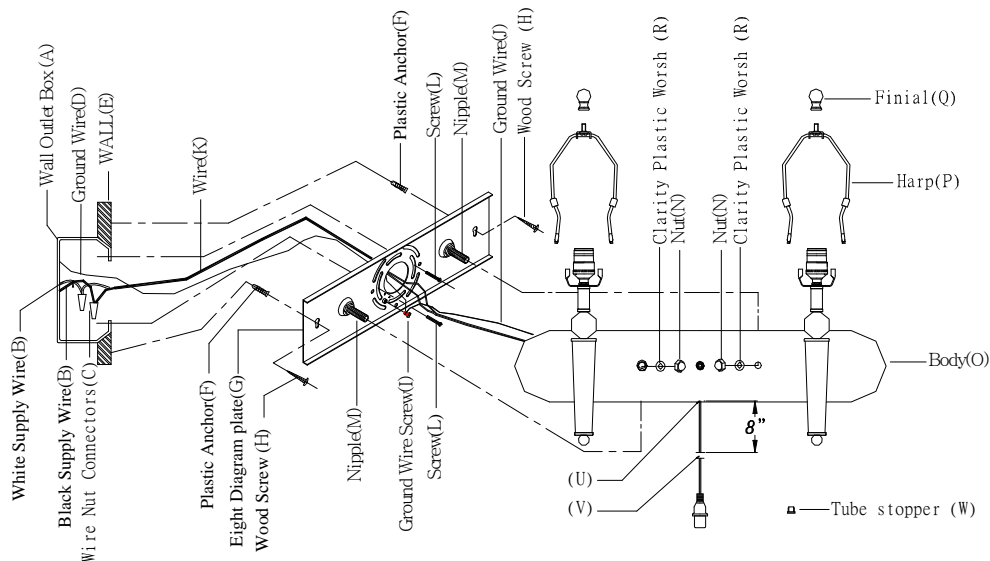


# ASSEMBLY INSTRUCTIONS

## ITEM NO: LA-8005W2L-1

**THE LAMP HAVE TWO OF MEANS TO ASSEMBLE: THIS IS FIXTURE.**

1. Carefully unpack and lay out the parts as shown in illustration .
2. According to the size of the key hole of the eight diagram plate to drill two horizontal holes. Knock the plastic anchor (F) into the holes to fix the eight diagram plate (G) onto the wall with wood screw (H) & screw (L). Connect the white supply wire (B) & wire (K) with the wire nut connectors (C), anode with anode & cathode with cathode & with insulating tape.
3. Connect the ground wire (D) & (J) with the ground wire screw (I).  
Fix the lamp body (O) across the nipple (M) onto the eight diagram plate and screw the clarity plastic worsh (R) & nut (N) to tighten the body.
4. Insert the harp (P) into the saddle on the body (O).  
Screw the finial (Q) onto harp (P) to tighten the shade .



**WATTAGE: TYPE A 2\*60W (BULB NOT INCLUDED)**

### **IMPORTANT SAFETY INSTRUCTIONS:**

THIS PORTABLE LAMP HAS A POLARIZED PLUG (ONE BLADE IS WIDER THAN THE OTHER) AS A FEATURE TO REDUCE THE RISK OF ELECTRIC SHOCK. THIS PLUG WILL FIT IN A POLARIZED OUTLET ONLY ONE WAY. IF IT DOES NOT FIT FULLY IN THE OUTLET, REVERSE THE PLUG. IF IT STILL DOES NOT FIT, CONTACT A QUALIFIED ELECTRICIAN. NEVER USE WITH AN EXTENSION CORD UNLESS THE PLUG CAN BE FULLY INSERTED. DO NOT ALTER THE PLUG.

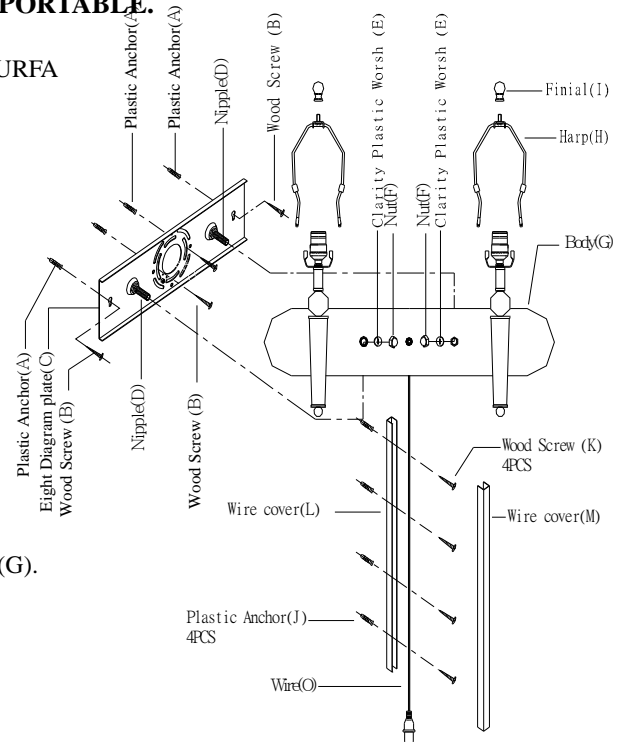
**SAVE THESE INSTRUCTIONS FOR FUTURE REFERENCE.**

# ASSEMBLY INSTRUCTIONS

## ITEM NO: LA-8005W2L-1

**THE LAMP HAVE TWO OF MEANS TO ASSEMBLE: THIS IS PORTABLE.**

1. CAREFULLY UNPACK AND PLACE ALL PARTS ON A SMOOTH SURFACE AND LAY THEM UP AS PER THE SKETCH.
2. DRILL FOUR LEVEL HOLES TO THE WALL AND PLACE THE PLASTIC ANCHOR (A) INTO IT.
3. SCREW THE EIGHT DIAGRAM PLATE (C) ONTO THE WALL WITH WOOD SCREW (B).
4. PLACE THE LAMP BODY (G) INTO THE EIGHT DIAGRAM PLATE (C) THROUGH THE NIPPLE (D) ,FIX WITH CLARITY PLASTIC WASHER (E) AND NUT (F)
5. INSERT THE HARP (H) INTO THE SADDLE OF THE LAMP BODY (G).
6. PUT THE SHADE (NOT INCLUDED) ONTO THE HARP (H) THEN SCREW IT WITH FINIAL (I).
7. PLACE THE WIRE COVER (L) ALONG THE WIRE, THEN DRILL FOUR HOLES AND PLACE PLASTIC ANCHOR (J) INTO IT.
8. FIX THE WIRE COVER (L) INTO THE WALL WITH WOOD SCREW(K), THEN PUT THE WIRE (O) STRAIGHT IN THE WIRE COVER (L).
9. PLACE THE UPPER WIRE COVER (M) ONTO THE BOTTOM WIRE COVER (L) TO RIGHT WAY.
10. INSERT THE POLARIZED PLUG INTO WALL OUTLET, TURN ON THE SWITCH AND ENJOY YOUR NEW LAMP.



**WATTAGE:** TYPE A 2\* 60W (BULB NOT INCLUDED)

## IMPORTANT SAFETY INSTRUCTIONS:

THIS PORTABLE LAMP HAS A POLARIZED PLUG (ONE BLADE IS WIDER THAN THE OTHER) AS A FEATURE TO REDUCE THE RISK OF ELECTRIC SHOCK. THIS PLUG WILL FIT IN A POLARIZED OUTLET ONLY ONE WAY. IF IT DOES NOT FIT FULLY IN THE OUTLET, REVERSE THE PLUG. IF IT STILL DOES NOT FIT, CONTACTA QUALIFIED ELECTRICIAN. NEVER USE WITH AN EXTENSION CORD UNLESS THE PLUG CAN BE FULLY INSERTED. DO NOT ALTER THE PLUG.

**SAVE THESE INSTRUCTIONS FOR FUTURE REFERENCE.**

325740B-1