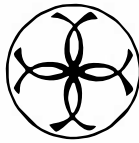


CRYST RAMA



1958

95 Cantiague Rock Road, Westbury NY 11590

ph:516.931.9090 fax: 516. 931.1254

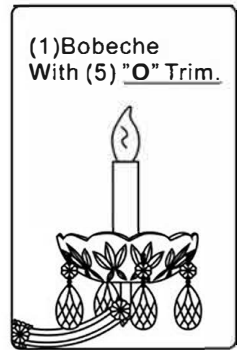
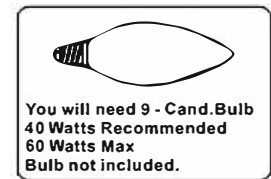
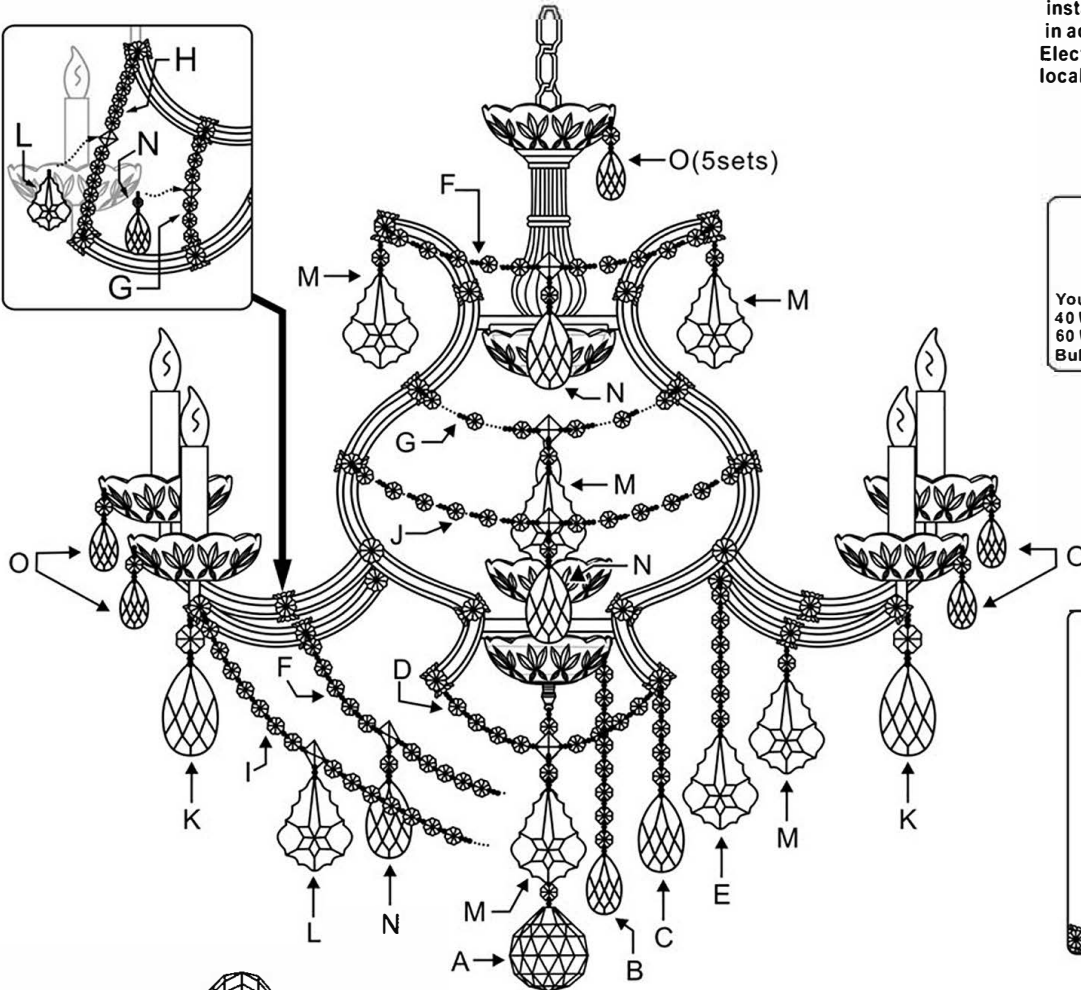
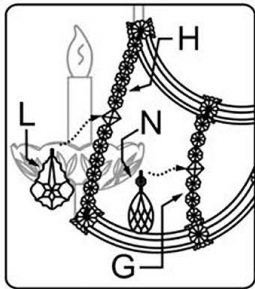
info@crystorama.com www.crystorama.com

MODEL#:4409

ASSEMBLY AND DRESSING INSTRUCTIONS



All electrical components must be installed by a licensed electrician in accordance with the National Electric Code and the appropriate local electrical codes.



(8 Jewels + 50mm Ball) x 1set.



(8 Jewels + 27/50-2") x 5sets.



(4 Jewels + 27/64-2.5") x 4sets.



(8 Jewels Strand+1x16mm-3 Holes Square) x 4sets.



(6 Jewels + 20/75-3") x 4sets.



(10 Jewels Strand+1x16mm-3 Holes Square) x 8sets.



(6 Jewels Strand+1x16mm-3 Holes Square) x 8sets.



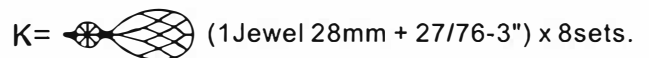
(12 Jewels Strand+1x16mm-3 Holes Square) x 4sets.



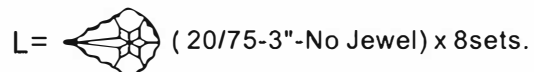
(14 Jewels Strand+1x16mm-3 Holes Square) x 4sets.



(12 Jewels Strand+1x16mm-3 Holes Square) x 4sets.



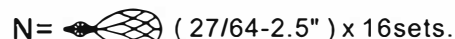
(1Jewel 28mm + 27/76-3") x 8sets.



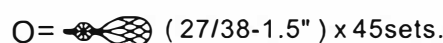
(20/75-3"-No Jewel) x 8sets.



(20/75-3") x 20sets.



(27/64-2.5") x 16sets.



(27/38-1.5") x 45sets.