

INSTALLATION INSTRUCTIONS

VENTRIX - High Output and Regressed Direct Element

S2DH12, S2DH24, S2DH48, S2DR12, S2DR24, S2DR48

VENTRIX
BY WAC

CAUTION: TO PREVENT ELECTRICAL SHOCK, ENSURE ELECTRICITY HAS BEEN TURNED OFF AT THE CIRCUIT BREAKER BEFORE BEGINNING.

- Read all instructions before installing.
- System is intended for installation by a licensed electrician in accordance with the National Electrical Code (NEC) and local regulations.
- When handling the fixture, do not apply pressure to the LEDs. Hold the fixture by the base only.
- Retain installation instructions for future maintenance reference.
- VENTRIX fixtures and channels feature separate data and power conductor systems. During installation and use, do not short the data or power conductors together by any means or damage may occur.

WARNING: All parts must be used as indicated in these instructions. This product is designed for use only with the supplied parts and/or accessories designated for use by WAC Lighting. Substitution of parts or accessories not designated for use with this product by WAC Lighting could result in personal injury or property damage, and will void the warranty. Contact an authorized dealer or the manufacturer if any parts are damaged or missing.

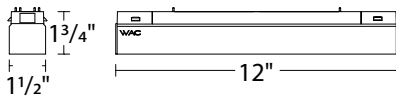
MISE EN GARDE: POUR ÉVITER TOUT CHOC ÉLECTRIQUE, ASSUREZ-VOUS QUE LE DISJONCTEUR SOIT MIS HORS TENSION AVANT DE COMMENCER.

- Lisez toutes les instructions avant l'installation.
- Le système doit être installé par un électricien licencié conformément au code national de l'électricité (NEC), et également aux règlements locaux.
- Lors de la manipulation du luminaire, n'appuyez pas sur les LED. Tenez-le uniquement par la base.

ATTENTION: Toutes les pièces doivent être utilisées comme indiqué dans ces instructions. Ce produit est conçu pour être utilisé seulement avec les pièces et/ou accessoires fournis pour être utilisés avec les produits WAC Lighting. Remplacer des pièces ou accessoires non conçus pour ce produit WAC Lighting pourrait causer des dommages corporels ou matériels et pourrait également causer l'annulation de la garantie. Veuillez contacter un revendeur autorisé ou le fabricant si des pièces manquent ou sont endommagées.

OVERALL FIXTURE DIMENSIONS

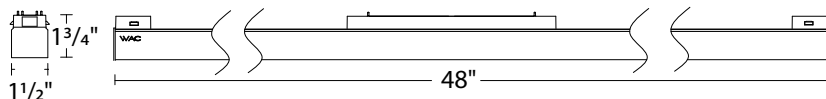
S2DH12, S2DR12



S2DH24, S2DR24



S2DH48, S2DR48



FIXTURE OVERVIEW

VENTRIX High Output and Regressed Direct Lights are intended for use on WAC Lighting's VENTRIX Channel systems.

LED LUMINAIRE	VENTRIX SYSTEM
S2DH12, S2DH24, S2DH48 S2DR12, S2DR24, S2DR48	48VDC VENTRIX System

SPECIFICATIONS	
Input:	48VDC
Installation:	VENTRIX System
Dimming:	Via VENTRIX Connected Power Unit. Refer to CPU Specifications.

wacighting.com

Phone (800) 526.2588

Fax (800) 526.2585

Headquarters, East Manufacturing Facility

44 Harbor Park Drive

Port Washington, NY 11050

South East Manufacturing Facility

1600 Distribution Ct

Lithia Springs, GA 30122

Central Manufacturing Facility

1700 South J Elmer Freeway, Ste 100

Cedar Hill, TX 75104

West Manufacturing Facility

1750 S Archibald Ave

Ontario, CA 91761

INSTALLATION INSTRUCTIONS

VENTRIX - High Output and Regressed Direct Element

S2DH12, S2DH24, S2DH48, S2DR12, S2DR24, S2DR48

VENTRIX
BY WAC

PREPARATION:

1. Shut off the power at the circuit breaker and ensure adequate room to install the new fixture on the VENTRIX Channel system.
2. Carefully unpack your new fixture and lay out all the parts on a clear area. Be careful not to lose any parts necessary for installation.

FIXTURE INSTALLATION TO VENTRIX SYSTEM:

The fixture features a VENTRIX adapter for power and mechanical connection to the installed VENTRIX channel system.

1. This fixture may be installed into horizontally or vertically mounted VENTRIX channel systems. (See **FIG. 1**).
2. Fixtures are polarity agnostic, and may be installed in VENTRIX channel in either orientation. (See **FIG. 2**).
3. Insert the fixture into the channel slot. Ensure the fixture is parallel to the channel during installation. Push the fixture into the channel until you hear a click and fixture is fully secured.

NOTE: Fixture adapters also feature magnets to aid in fixture locating. (See **FIG. 3**).

CAUTION: Prior to installation in channel, clear any debris from channel bus bar and fixture, particularly on magnetic surfaces. Any conductive elements have potential to cause electrical shorting resulting in damage.

4. Review connections and be sure both sets of locking tabs are secured in channel prior to finishing installation.

FIG. 1

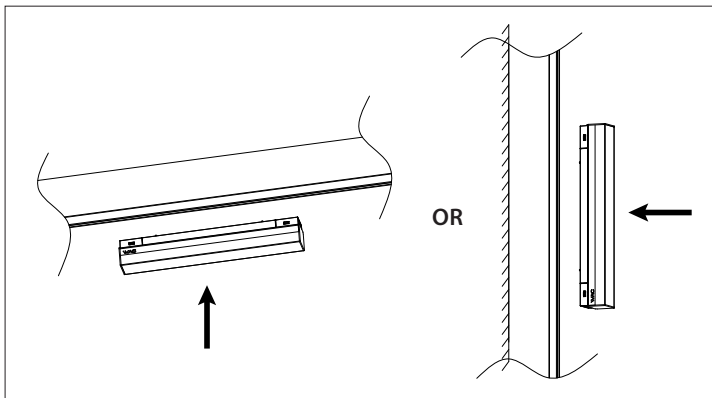


FIG. 2

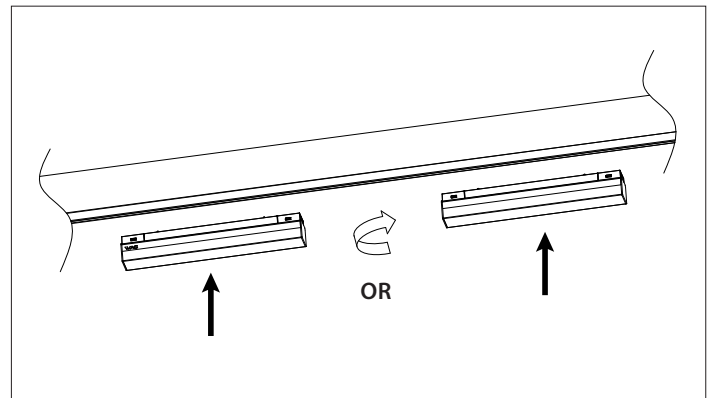
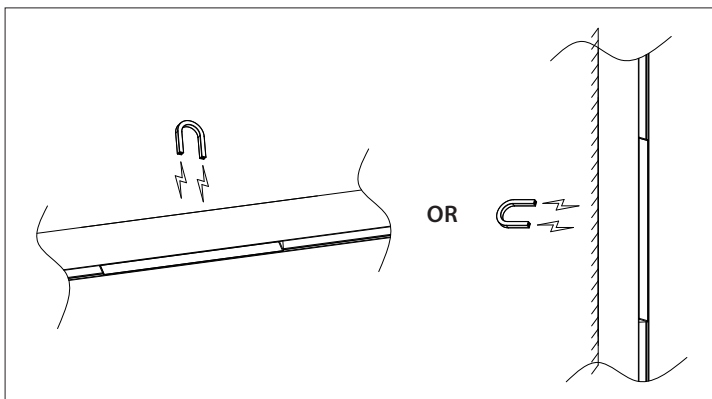


FIG. 3



RELOCATING THE FIXTURE IN CHANNEL:

While installed to the VENTRIX system, the fixture may be relocated. The fixture and channel may be powered ON or OFF during the relocation process.

1. By hand, relocate the fixture within a channel by pushing the adapter in the desired direction. (See **FIG. 4**).
2. Fixtures cannot be relocated between channels. It must be removed, repositioned, and then installed from one channel to another. (See **FIG. 5**).

wacighting.com

Phone (800) 526.2588

Fax (800) 526.2585

Headquarters, East Manufacturing Facility

44 Harbor Park Drive

Port Washington, NY 11050

South East Manufacturing Facility

1600 Distribution Ct

Lithia Springs, GA 30122

Central Manufacturing Facility

1700 South J Elmer Freeway, Ste 100

Cedar Hill, TX 75104

West Manufacturing Facility

1750 S Archibald Ave

Ontario, CA 91761

INSTALLATION INSTRUCTIONS

VENTRIX - High Output and Regressed Direct Element

S2DH12, S2DH24, S2DH48, S2DR12, S2DR24, S2DR48

VENTRIX
BY WAC

FIG. 4

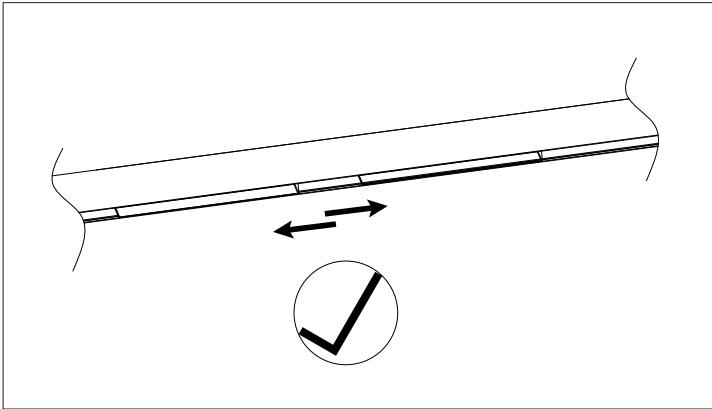
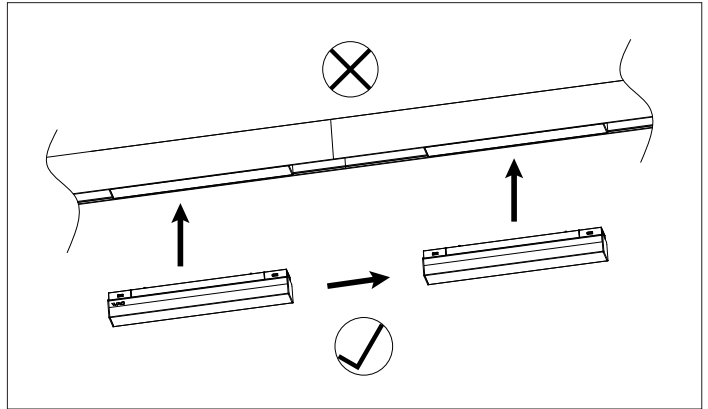


FIG. 5



REMOVING THE FIXTURE FROM THE CHANNEL:

1. By hand, engage and press both push buttons on the adapter. While both push buttons are pressed, pull the fixture away from the channel, until it is clear of the channel (See **FIG. 6**). **NOTE:** Ensure the adapter is parallel to the channel during removal. (See **FIG. 7**).
2. To enable fixture removal from channel, maintain free channel space of 1.5" on each side of adapter to enable access to releasing locking tabs.

FIG. 6

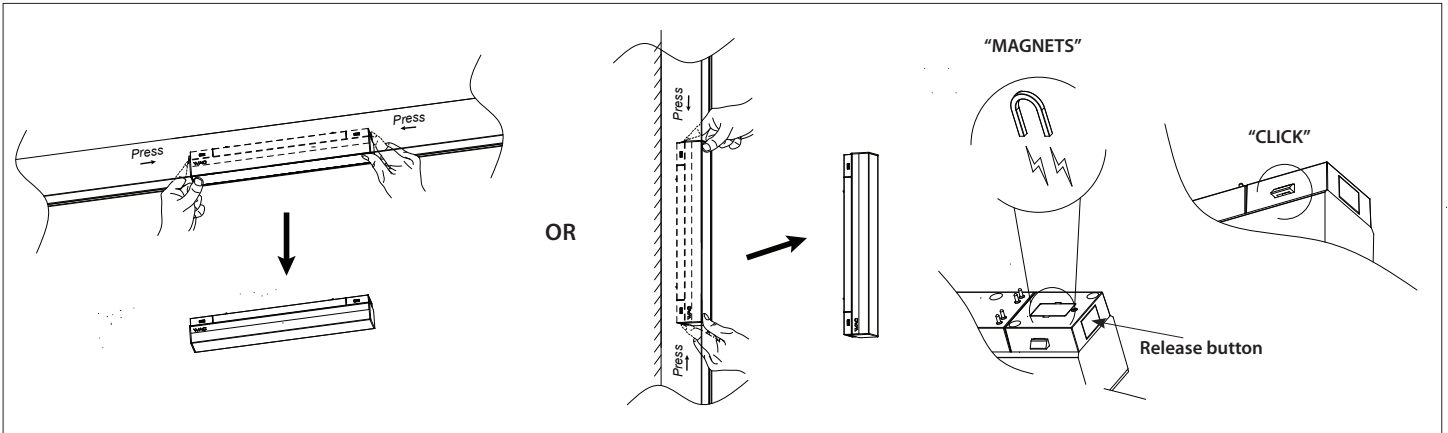
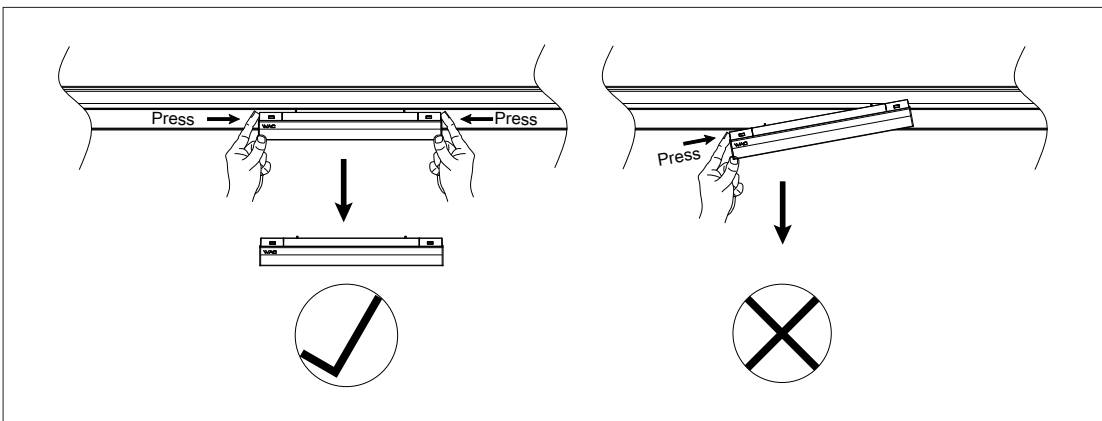


FIG. 7



wacighting.com

Phone (800) 526.2588

Fax (800) 526.2585

Headquarters, East Manufacturing Facility

44 Harbor Park Drive

Port Washington, NY 11050

South East Manufacturing Facility

1600 Distribution Ct

Lithia Springs, GA 30122

Central Manufacturing Facility

1700 South J Elmer Freeway, Ste 100

Cedar Hill, TX 75104

West Manufacturing Facility

1750 S Archibald Ave

Ontario, CA 91761

INSTALLATION INSTRUCTIONS

VENTRIX - High Output and Regressed Direct Element

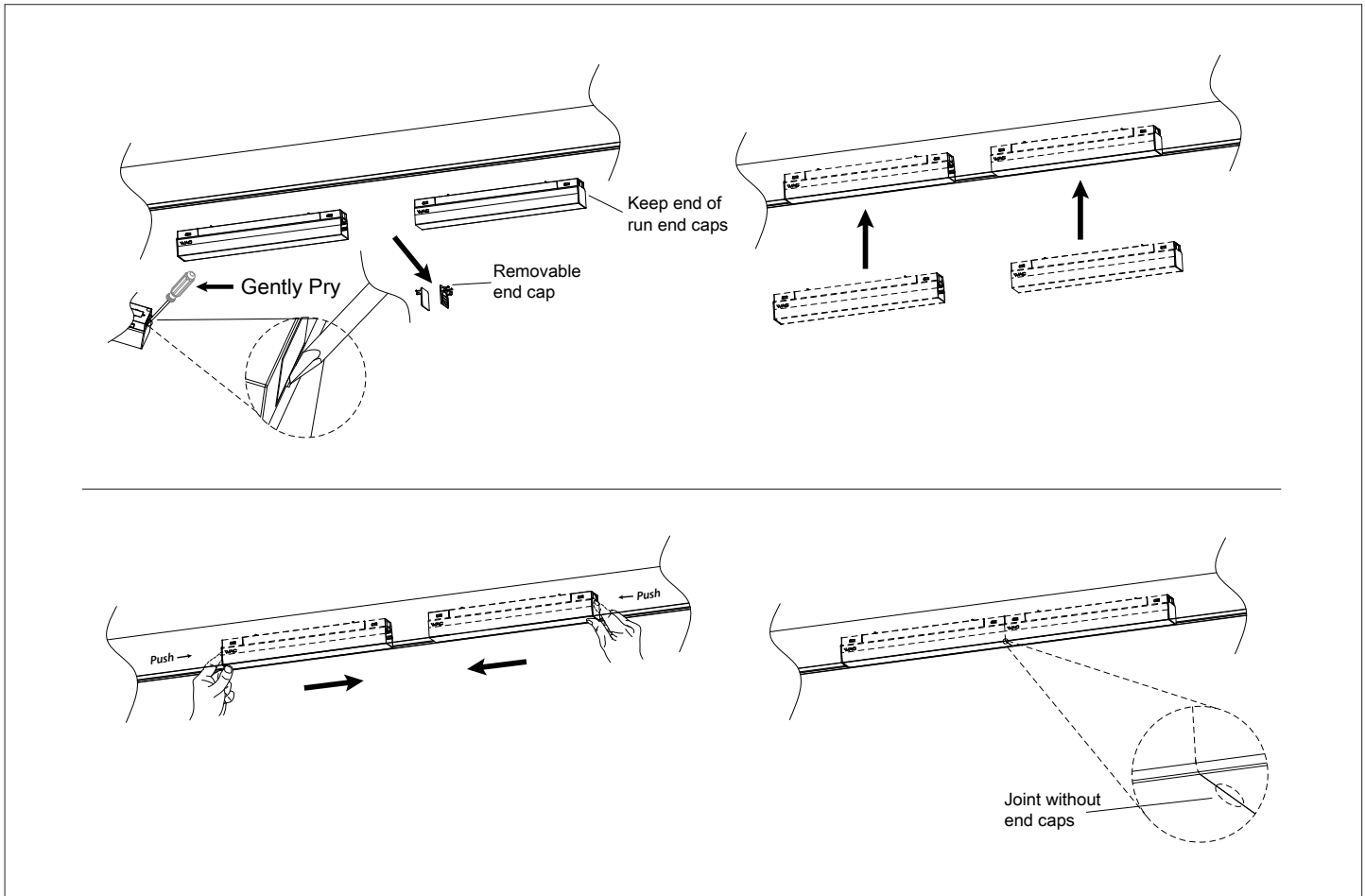
S2DH12, S2DH24, S2DH48, S2DR12, S2DR24, S2DR48

VENTRIX
BY WAC

OPTIONAL ADJOINING FIXTURE INSTALLATION WITHOUT END CAPS AT JOINTS:

1. Prior to installation in channel, use a small flat head screwdriver to gently pry end cap from fixture where it will abut another direct fixture.
Note: Maintain end caps at end of fixture runs. (See FIG. 8)
2. Follow previously outlined fixture installation steps to install fixtures in VENTRIX channel. Gently slide adjoining fixtures together. (See FIG. 8)

FIG. 8



wacighting.com

Phone (800) 526.2588

Fax (800) 526.2585

Headquarters, East Manufacturing Facility

44 Harbor Park Drive

Port Washington, NY 11050

South East Manufacturing Facility

1600 Distribution Ct

Lithia Springs, GA 30122

Central Manufacturing Facility

1700 South J Elmer Freeway, Ste 100

Cedar Hill, TX 75104

West Manufacturing Facility

1750 S Archibald Ave

Ontario, CA 91761

INSTALLATION INSTRUCTIONS

VENTRIX - High Output and Regressed Direct Element

S2DH12, S2DH24, S2DH48, S2DR12, S2DR24, S2DR48

VENTRIX
BY WAC

FIXTURE REMOVAL FROM COMPLETELY FILLED CHANNEL (TROUBLESHOOTING):

For scenarios where the VENTRIX Channel is completely filled by the fixture, access to the push buttons may be obstructed.

1. Power off the fixture and allow it to cool down.
2. Using a small prying tool or screw driver, separate the lens from the fixture housing. (See **FIG. 9**).
3. While holding the fixture end cap, insert a small screw driver (PH00 or 2MM Flat recommended), into the fixture element locking tab release slot on one fixture side. Angle tool inward to release the locking tab. Gently tilt fixture away from channel. Repeat same procedure on opposite end of fixture until fixture is free of the channel (See **FIG. 10**).

FIG.9

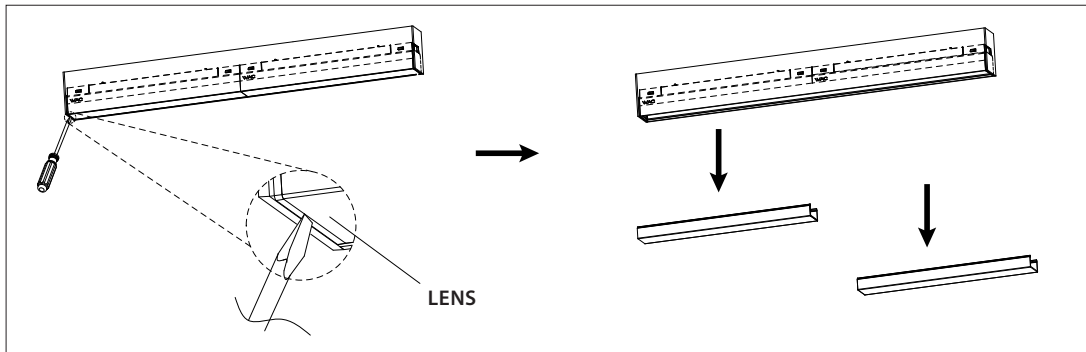
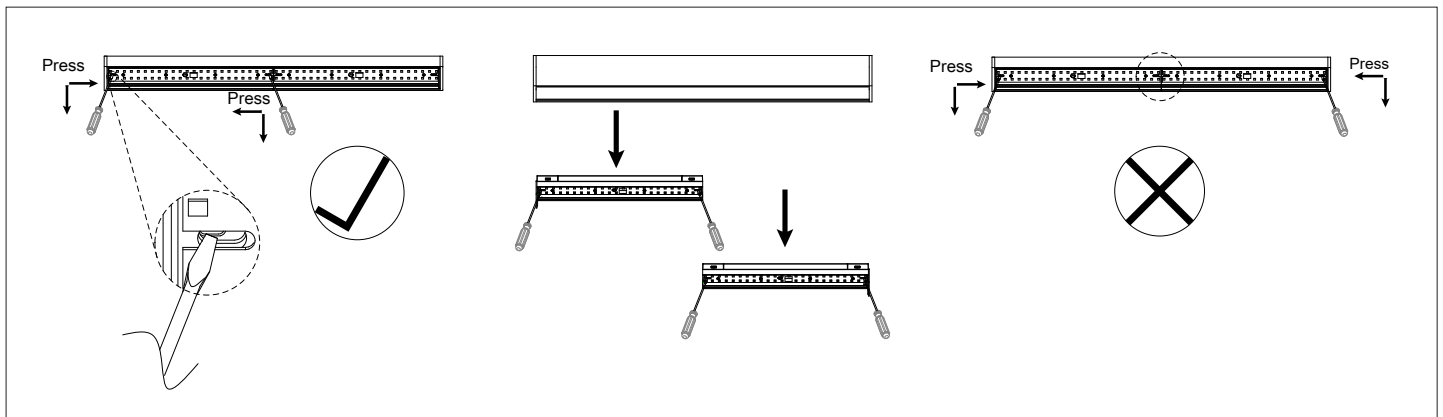


FIG. 10



wacighting.com

Phone (800) 526.2588

Fax (800) 526.2585

Headquarters, East Manufacturing Facility

44 Harbor Park Drive

Port Washington, NY 11050

South East Manufacturing Facility

1600 Distribution Ct

Lithia Springs, GA 30122

Central Manufacturing Facility

1700 South J Elmer Freeway, Ste 100

Cedar Hill, TX 75104

West Manufacturing Facility

1750 S Archibald Ave

Ontario, CA 91761