

WAC LIGHTING

VENTRIX

Silo S2SA-2

Fixture Type: _____

Catalog Number: _____

Project: _____

Location: _____

Model & size	Power	Watt	Beam	Color Temp & CRI	Delivered Lumens	CBCP	Finish
S2SA	2	27W	F 38°	927 2700K - 90	2300	5590	BK Black WT White
	2	27W	F 38°	930 3000K - 90	2420	5890	
	2	27W	F 38°	935 3500K - 90	2540	6180	
	2	27W	F 38°	940 4000K - 90	2590	6300	
	2	27W	N 25°	927 2700K - 90	2300	12010	
	2	27W	N 25°	930 3000K - 90	2420	12640	
	2	27W	N 25°	935 3500K - 90	2540	13280	
	2	27W	N 25°	940 4000K - 90	2590	13530	
	2	27W	S 15°	927 2700K - 90	1800	11380	
	2	27W	S 15°	930 3000K - 90	1900	11980	
	2	27W	S 15°	935 3500K - 90	1990	12570	
	2	27W	S 15°	940 4000K - 90	2030	12810	
	2	27W	W 50°	927 2700K - 90	2180	3340	
	2	27W	W 50°	930 3000K - 90	2300	3520	
	2	27W	W 50°	935 3500K - 90	2410	3700	
	2	27W	W 50°	940 4000K - 90	2460	3770	

Example: **S2SA-2-F927BK**

DESCRIPTION

The only lighting, power, and control system complete with lighting elements designed for discriminating performance. Configure VENTRIX for your retail, restaurant, commercial office, or residential lighting plan.

FEATURES

- Adjustable accent elements with high lumen output.
- Stealth armature with 360° horizontal rotation and 90° vertical aiming
- Accepts one lens and glare control accessory
- To enable access to VENTRIX element releasing tabs, maintain at least 3" of free channel space
- Narrow Flood, Flood, Wide Flood optics are field changeable. Spot optic features a dedicated optic and is not interchangeable
- Driver concealed within the fixture
- 5 year warranty

SPECIFICATIONS

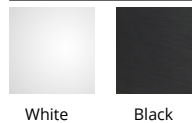
Construction:	Die-cast aluminum
Power:	27W
Input:	48 VDC
Dimming:	ELV: 100-0.1% , 0-10V: 100-0.1%, TRIAC: 100-0.1%
Light Source:	Integrated LED 3 Step Mac Adam Ellipse
Rated Life:	50000 Hours
Mounting:	Installs magnetically and mechanically into VENTRIX system, Can be mounted on ceiling or wall vertically or horizontally
Finish:	Electrostatically Powder Coated: Black, White
Operating Temp:	-4°F to 104°F (-20°C to 40°C)
Standards:	UL, cUL, Dry Location Listed, Title 24 JA8 Compliant

REPLACEMENT PARTS

- TIR-HER1-OD50-N - Narrow Flood Optic
- TIR-HER1-OD50-W - Wide Flood Optic
- TIR-HER1-OD50-F - Flood Optic

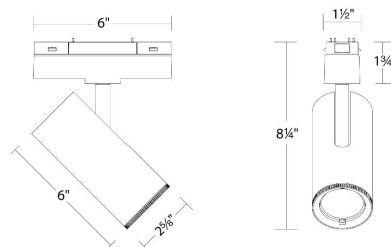


FINISHES:



White Black

LINE DRAWING:



WAC LIGHTING

VENTRIX
Silo S2SA-2





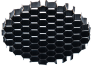


Fixture Type: _____

Catalog Number: _____

Project: _____

Location: _____

ACCESSORIES

	<i>Model</i>	<i>Description</i>	<i>Finish</i>
	LENS-16-RED LENS-16-GRN LENS-16-BLU LENS-16-AMB	Colored Lens Colored Lens Colored Lens Colored Lens	Red Green Blue Amber
	LENS-16-FR	Clear/Frosted Lens	Frosted
	LENS-16-SPR	Spread Lens	Spread Lens
	LENS-16-BEL	Beam Elongating Lens	Beam Elongating
	LENS-16-HCM	Honeycomb Louver	Black
	LENS-16P-CRL-BK	Cross Louver	Black
	LENS-16-SNOOT-BK	Snoot	Black