

PLANTATION

4886BB

LARGE SINGLE TIER

A Hinkley classic, the ornate Plantation collection features exceptional pineapple shaped, clear optic glass that makes a noble statement with matching candle sleeves and elaborate, decorative cast detailing.

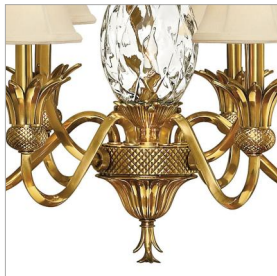
DETAILS	
FINISH:	Burnished Brass
MATERIAL:	Brass
GLASS:	Clear Optic
SHADE:	Ivory Silk
SLOPE DEGREE:	90
DIMMABLE:	YES, WITH DIMMABLE LAMP (NOT INCLUDED)

DIMENSIONS	
WIDTH:	28"
HEIGHT:	33"
WEIGHT:	21lb

LIGHT SOURCE	
LIGHT SOURCE:	Socketed
WATTAGE:	7-5w Cand. LED, 60w Equiv.
VOLTAGE:	120v

MOUNTING	
CANOPY:	6" Dia.
LEAD WIRE:	1 X 72"

SHIPPING	
CARTON LENGTH:	19
CARTON WIDTH:	30
CARTON HEIGHT:	30
CARTON WEIGHT:	42



PRODUCT DETAILS:

- This item may be hung on a sloped ceiling
- Suitable for use in dry (indoor) locations as defined by NEC and CEC. Meets United States UL Underwriters Laboratories & CSA Canadian Standards Association Product Safety Standards.
- Features On/Off switch
- Classic, elegant lines and timeless details enhance a traditional space

HINKLEY

HINKLEY
33000 Pin Oak Parkway
Avon Lake, OH 44012

PHONE: (440) 653-5500
Toll Free: 1 (800) 446-5539

hinkley.com