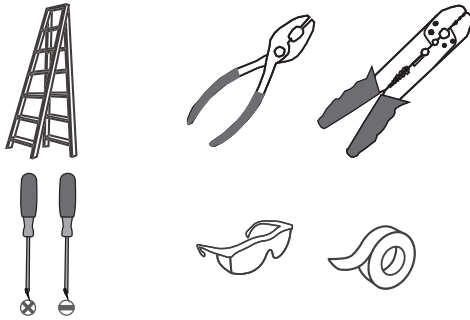


Tools Required



Light Source

47W
LED

Fixture Height Adjustable
7.75" to 90.75"

⚠ Warnings and Cautions

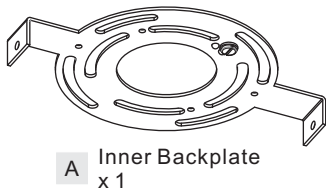
Turn off the electricity at the circuit breaker before installation. Consult a licensed electrician if in doubt about installation.

Package Contents

Preparation: Identify and inspect all parts before beginning the installation.

Missing or damaged parts? Contact your original place of purchase.

PARTS BAG

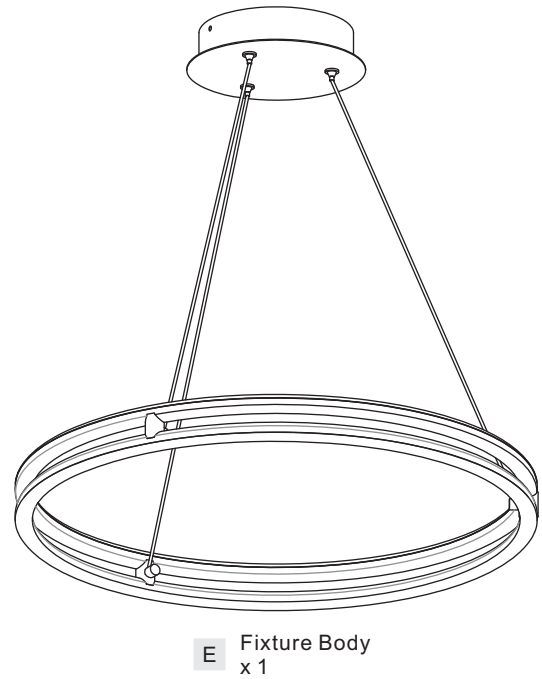


A Inner Backplate
x 1

B Lock Screw
x 2

C Outlet Box Screw
x 2

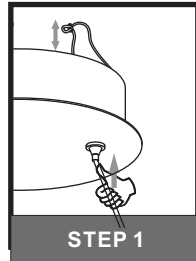
D Wire Connector
x 3



E Fixture Body
x 1

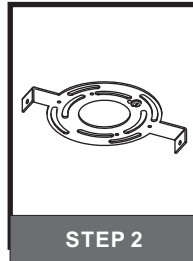
Table of Contents

Adjust Cord Length



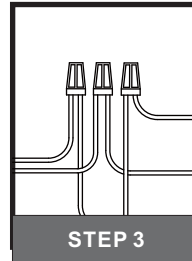
STEP 1

Inner Backplate



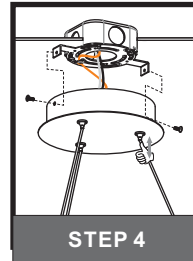
STEP 2

Wiring



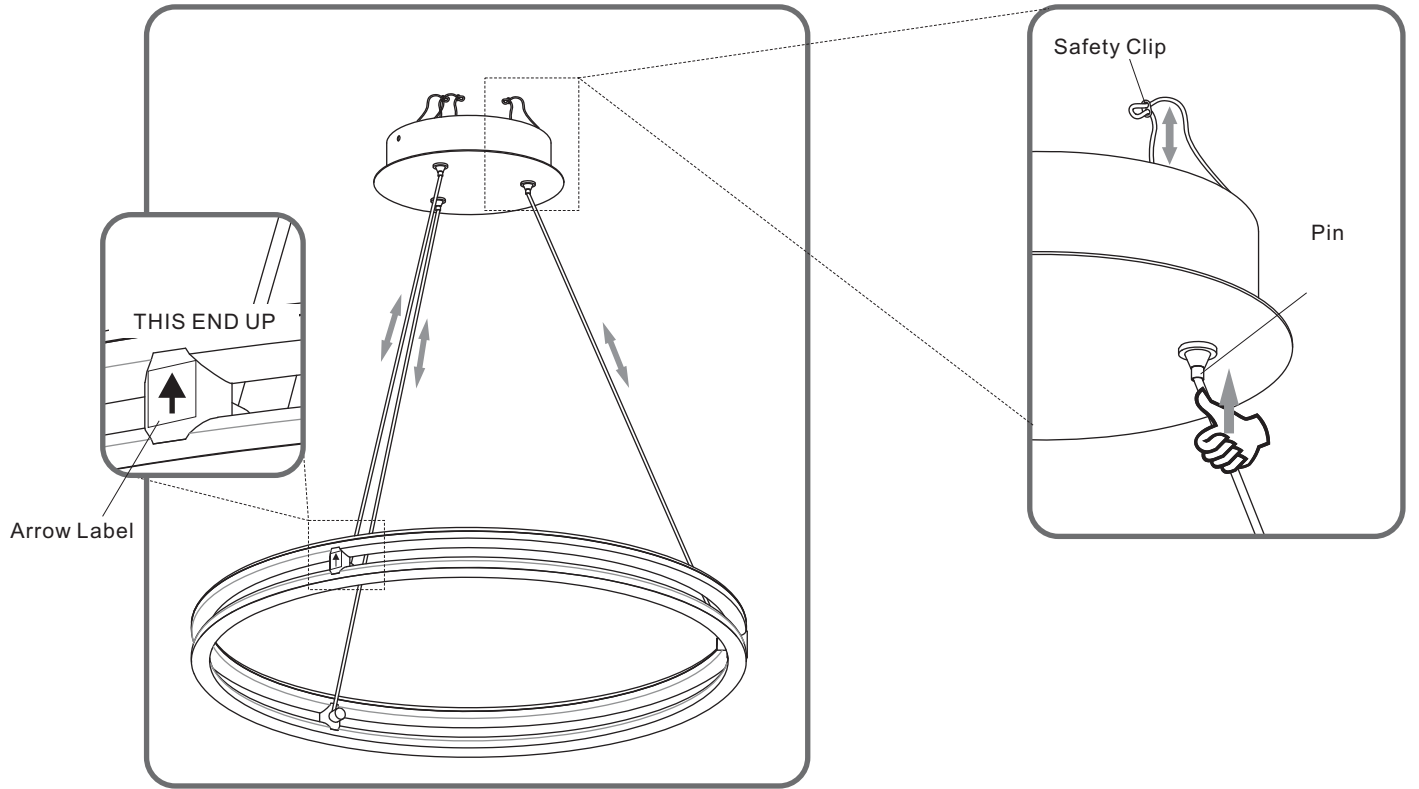
STEP 3

Ceiling Canopy

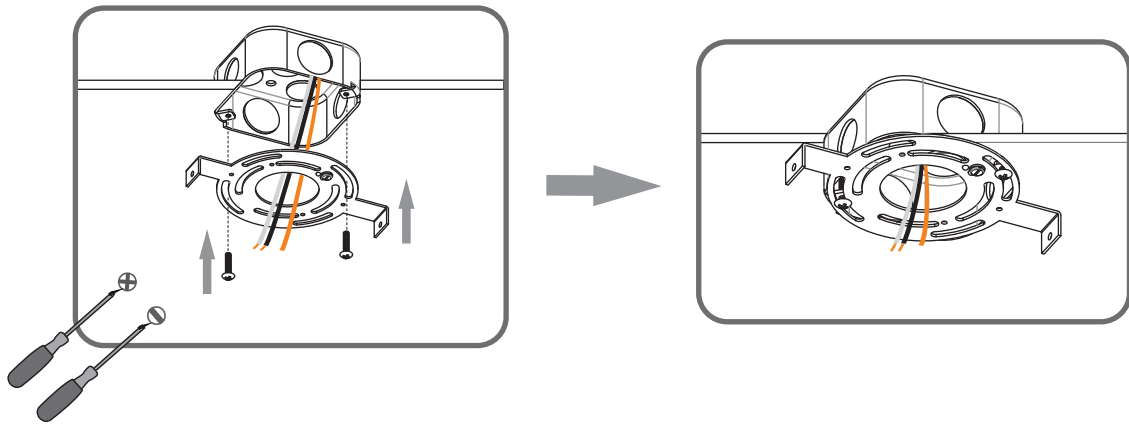


STEP 4

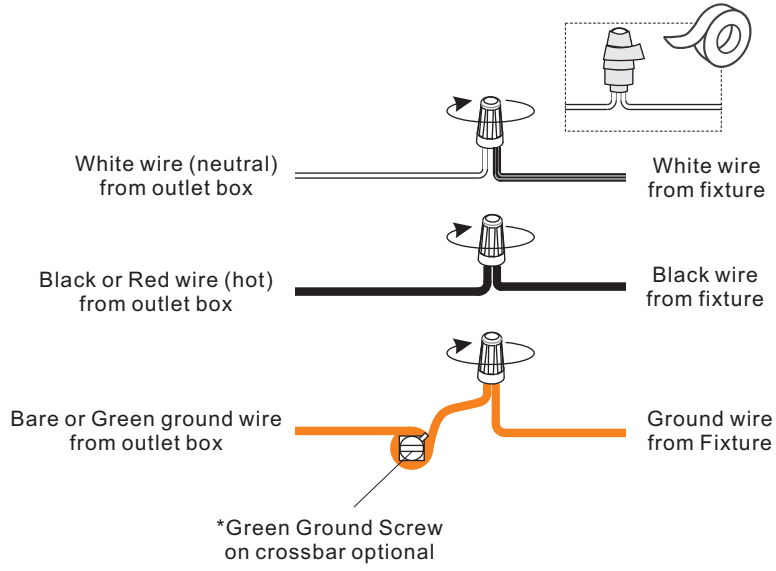
STEP 1



STEP 2



STEP 3



STEP 4

