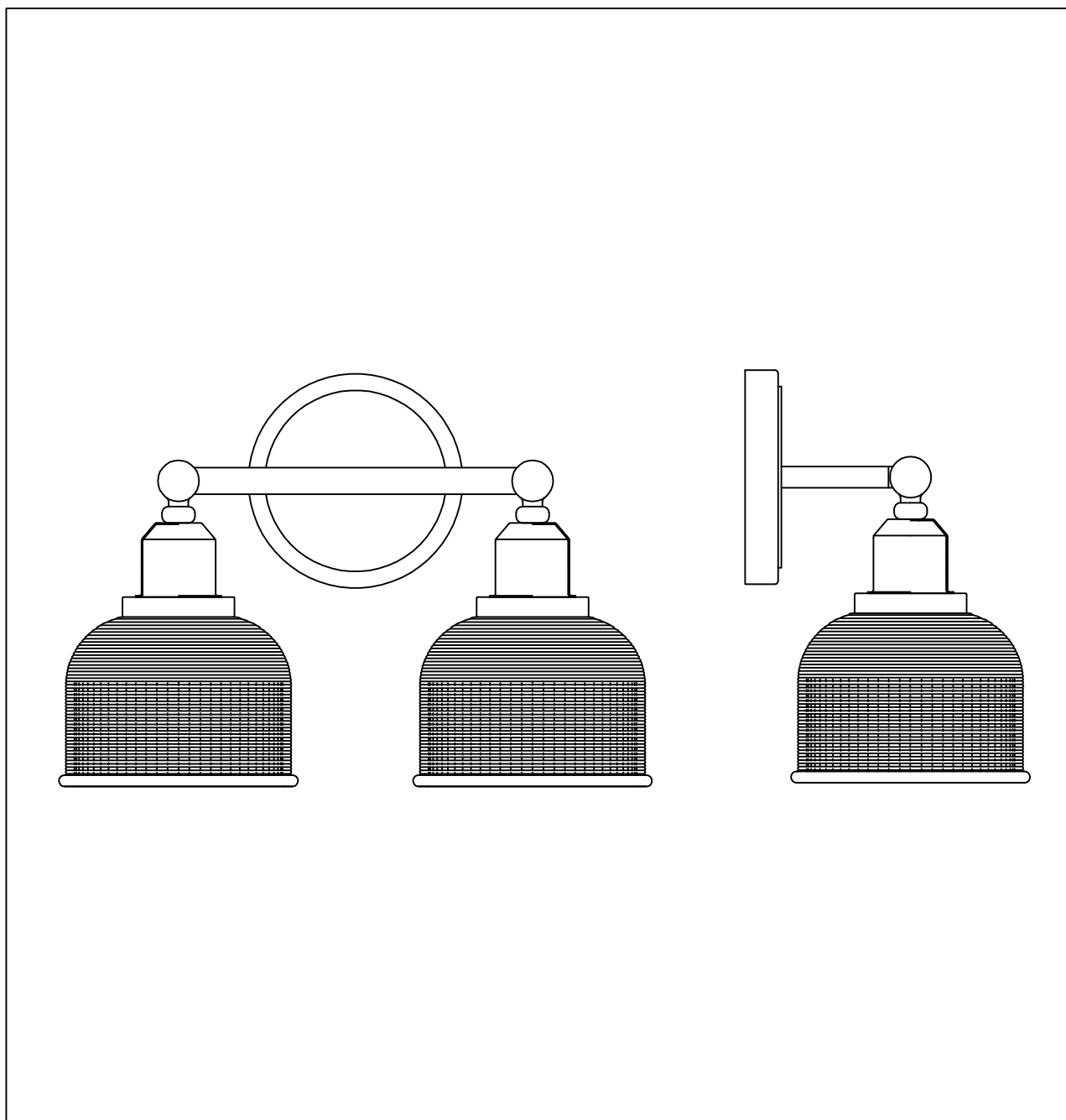




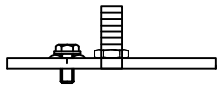
PRODUCT NAME: Hollow 2LT Wall Sconce
NUMBER: 11322

Please consult your electrician for Hang fixture and wiring.



Bulb (Not included) : 2*MB 60W

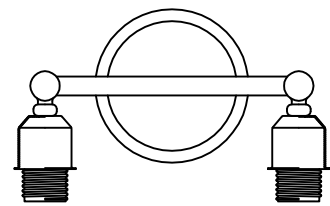
IMPORTANT: Turn off power at the main fuse or circuit breaker box before starting installation



(A) Bracket

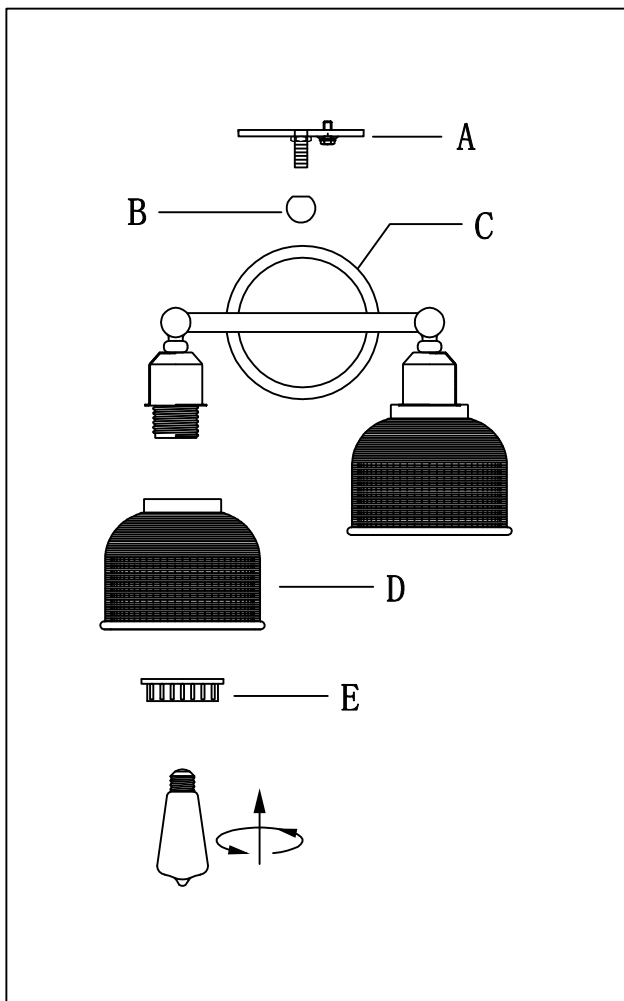


(B) Ball nut

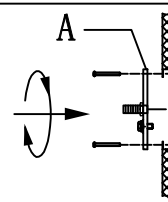


(C) Body&Socket

Locate all hardware & components before discarding packaging

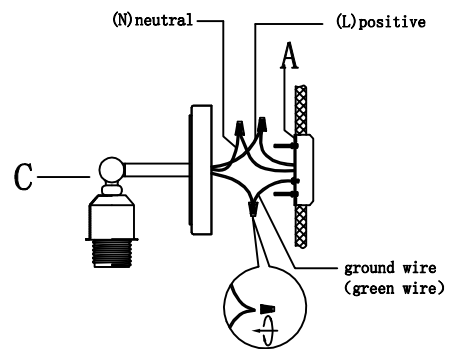


1.)



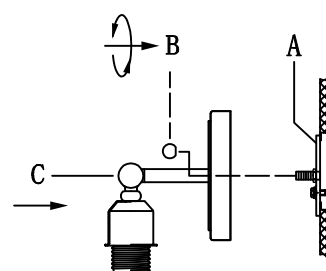
Step. 1: Remove mounting bracket (A) from fixture and install to electrical box.

2.)



Step. 2: Wire fixture to wires in outlet box. Copper/Green wire is for Ground.

3.)

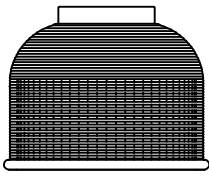


Step. 3: Install fixture to bracket (A) and tighten ball nuts (B) on the backplate to secure.

Cleaning & Care:

Clean with soft cloth and a mild detergent.
Do not use abrasive cleaner.

IMPORTANT: Turn off power at the main fuse or circuit breaker box before starting installation

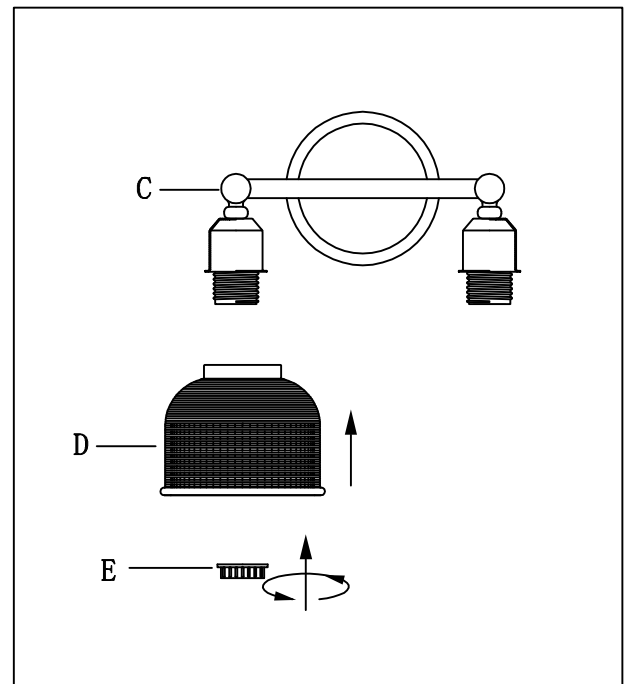
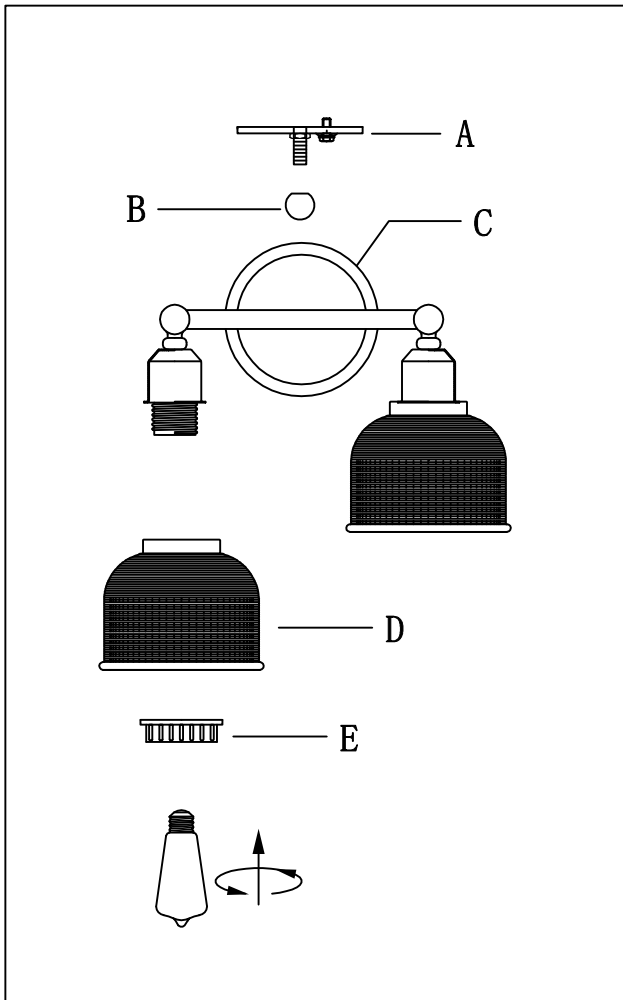


(D) Glass



(E) Socket ring

Locate all hardware & components before discarding packaging



Step. 4: Use the socket ring (E) to secure glass (D) on socket (C).

Cleaning & Care:

Clean with soft cloth and a mild detergent.
Do not use abrasive cleaner.