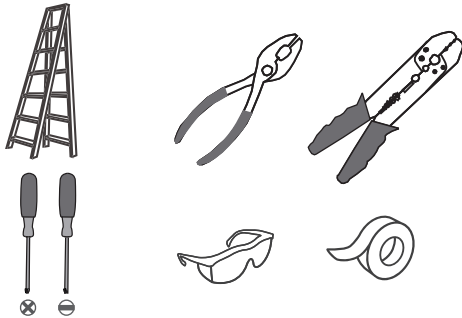
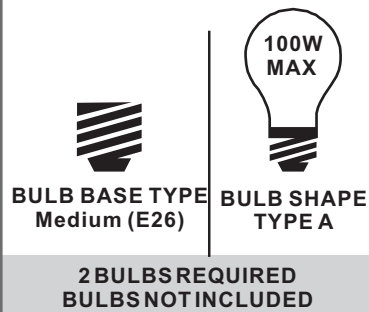


Tools Required



Light Source



Warnings and Cautions

Turn off the electricity at the circuit breaker before installation. Consult a licensed electrician if in doubt about installation.

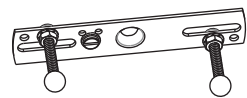
Turn off power to the fixture and allow the bulbs to cool before replacing.

Package Contents

Preparation: Identify and inspect all parts before beginning the installation.

Missing or damaged parts? Contact your original place of purchase.

PARTS BAG



A Crossbar Assembly x 1



B Outlet Box Screw x 2



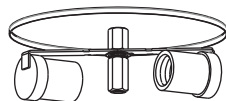
C Wire Connector x 3



D Ceiling Canopy x 1



E Center Column x 1



F Socket Assembly x 1



G Stem with Hex Nuts x 1



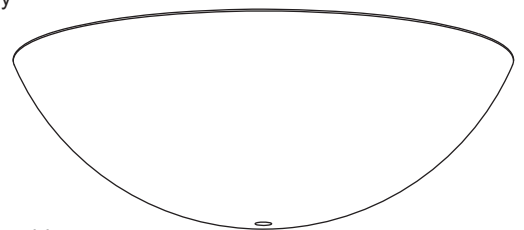
H Hex Nut x 1



I Flat Washer x 2



J Rubber Washer x 2



K Shade x 1



L Shade Holder x 1



M Cap x 1



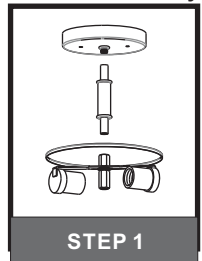
O Check Ring x 1



P Finial x 1

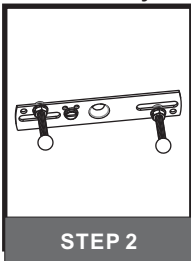
Table of Contents

Ceiling Canopy
Center Column
Socket Assembly



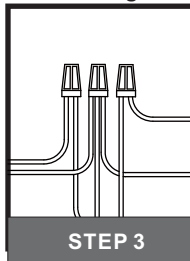
STEP 1

Crossbar
Assembly



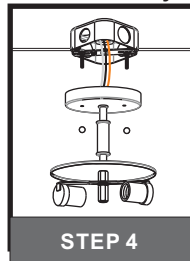
STEP 2

Wiring



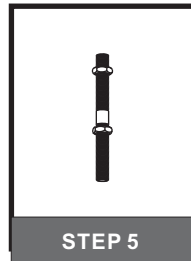
STEP 3

Fixture Body



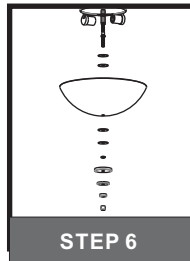
STEP 4

Stem & Hex Nut



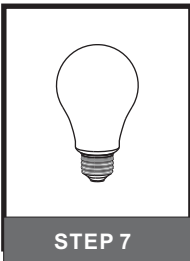
STEP 5

Shade & Cap



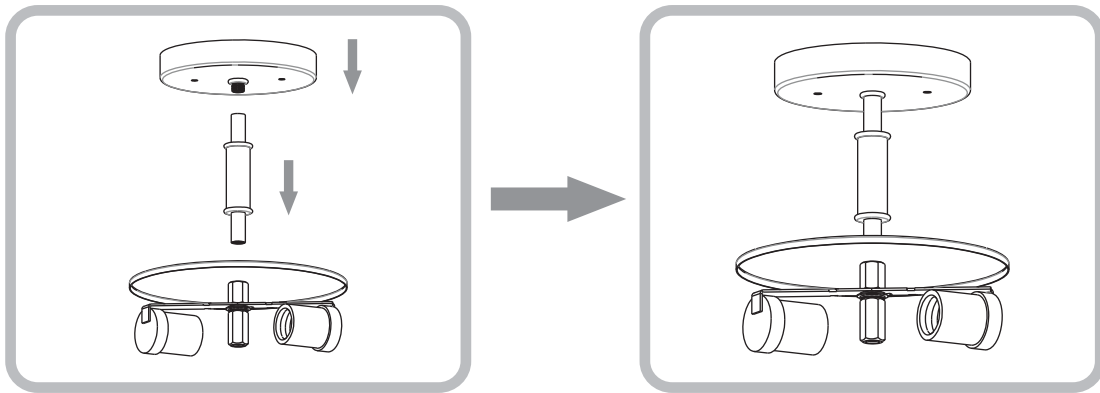
STEP 6

Bulbs



STEP 7

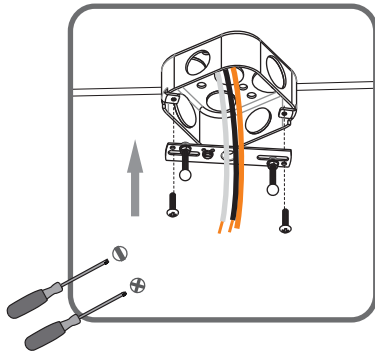
STEP 1



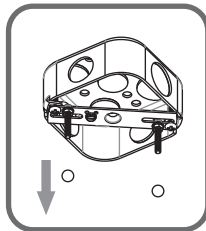
STEP 2

1

Step 1
Install crossbar assembly

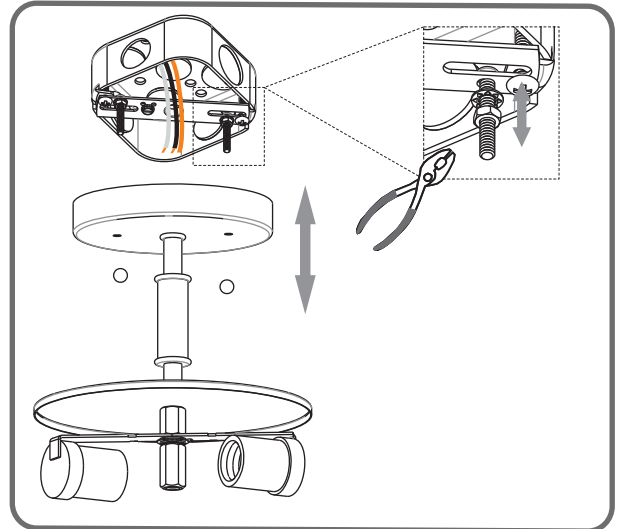


2

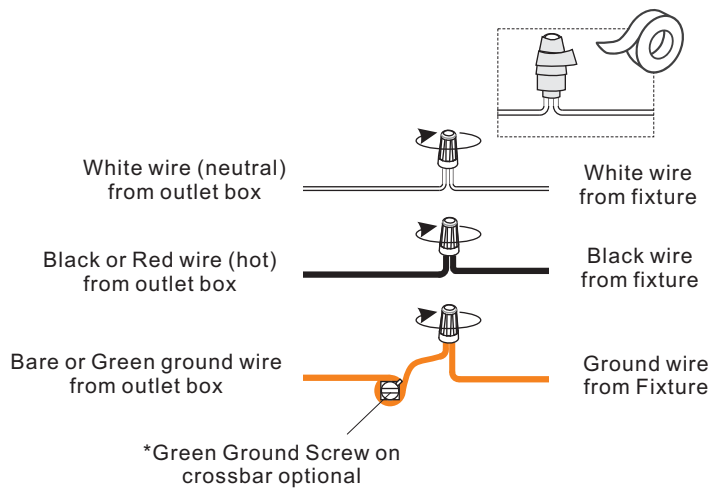


3

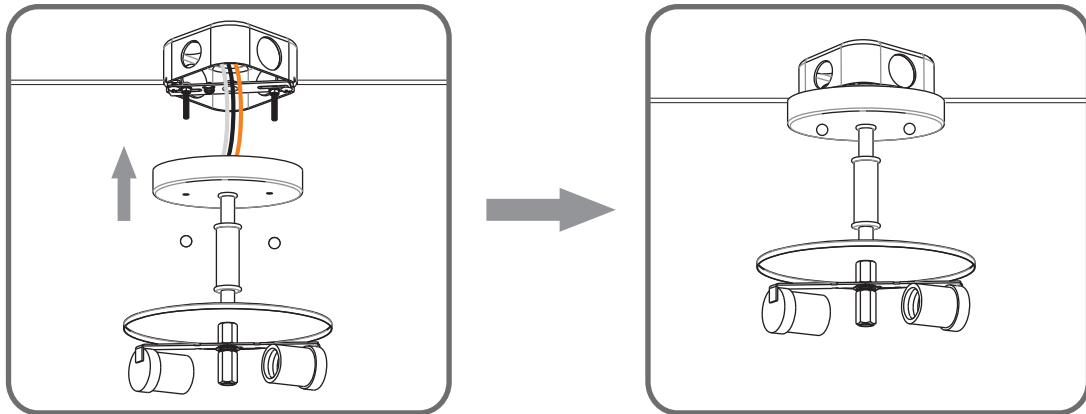
Step 2 - 3
Test fitting ceiling canopy to
mounting screws



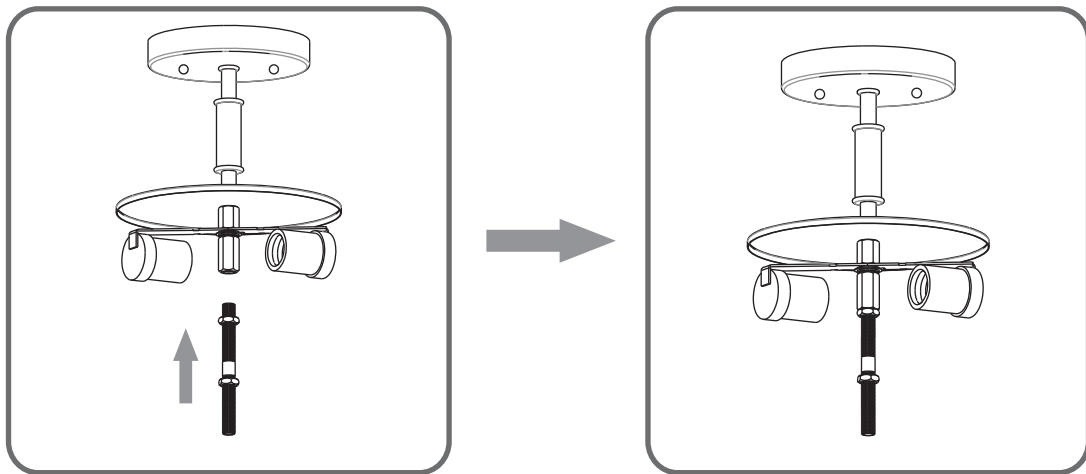
STEP 3



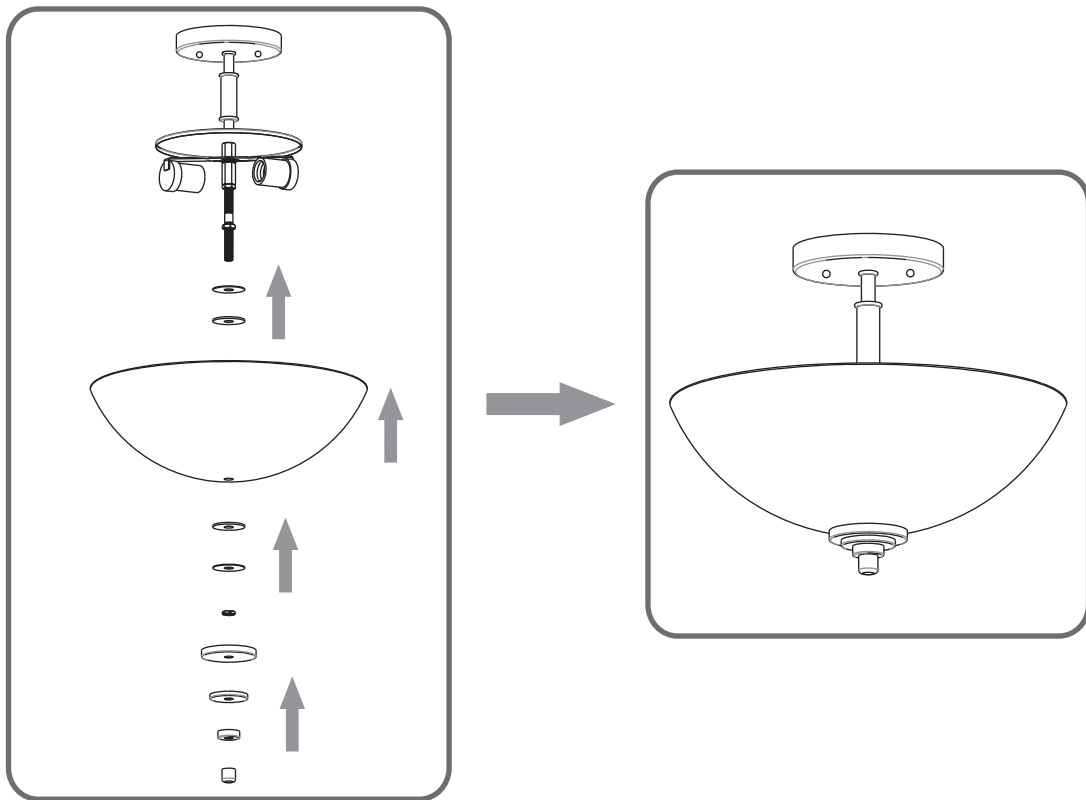
STEP 4



STEP 5



STEP 6



STEP 7

