

ACCENT SPOT LIGHT

1583NC

COPPER SPOT LIGHT

A wiring kit and ground spike is supplied.

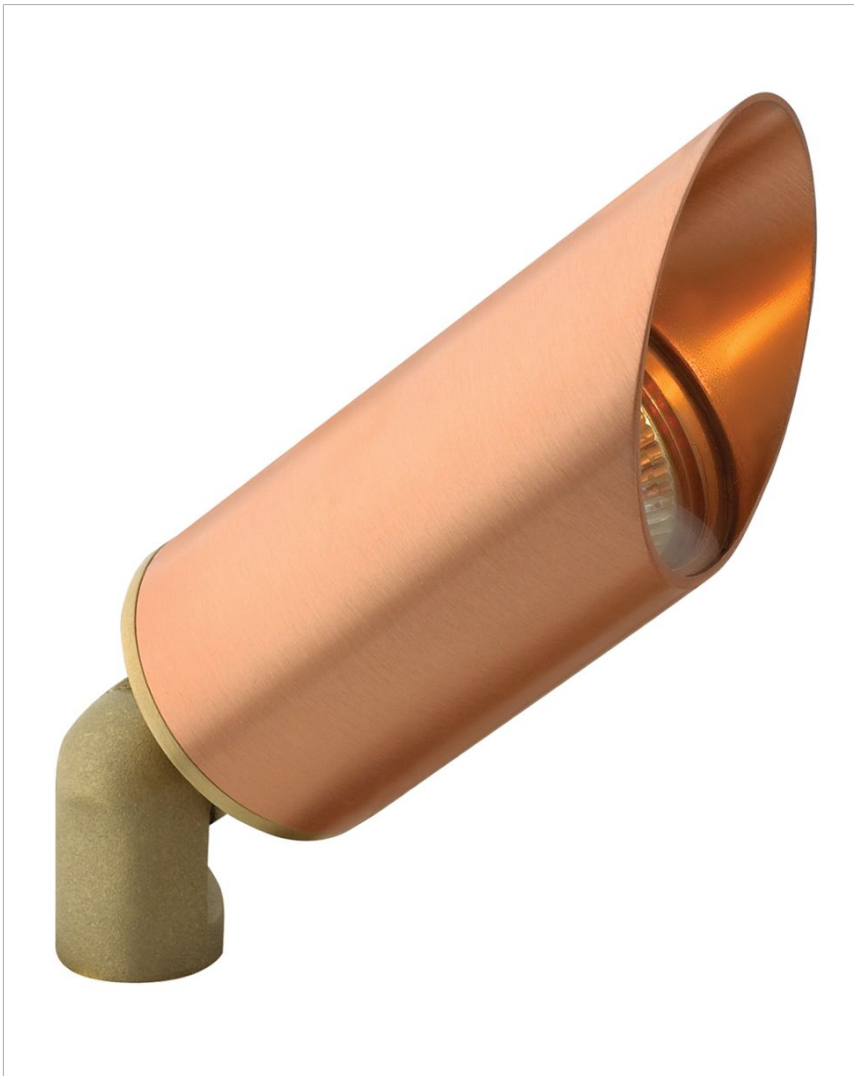
DETAILS	
FINISH:	Natural Copper
MATERIAL:	Copper
GLASS:	Clear
DIMMABLE:	YES, WITH DIMMABLE LAMP (NOT INCLUDED)

DIMENSIONS	
WIDTH:	7"
HEIGHT:	3"
DEPTH:	2.3
WEIGHT:	1.5lb

LIGHT SOURCE	
LIGHT SOURCE:	Socketed
WATTAGE:	1-8w MR16 LED, 12w Equiv.
VOLTAGE:	12v
TRANSFORMER REQUIRED:	Yes

MOUNTING	
LEAD WIRE:	1 X 18"

SHIPPING	
CARTON LENGTH:	9.5
CARTON WIDTH:	5
CARTON HEIGHT:	3.5
CARTON WEIGHT:	2



PRODUCT DETAILS:

- A wiring kit and ground spike are supplied
- Suitable for use in wet (outdoor direct rain) locations as defined by NEC and CEC. Meets United States UL Underwriters Laboratories & CSA Canadian Standards Association Product Safety Standards
- Photometrics are based off bulb photometrics.
- Optional performance lenses available
- For more information on how to control your landscape lighting via the Hinkley Home Automation App, [click here](#).
- Classic lines and heritage details complement traditional architecture
- Gleaming copper finish that ages naturally over time

HINKLEY

HINKLEY
33000 Pin Oak Parkway
Avon Lake, OH 44012

PHONE: (440) 653-5500
Toll Free: 1 (800) 446-5539

hinkley.com