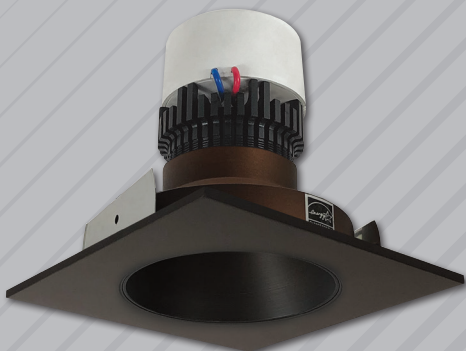


NORA[®]
LIGHTING

PEARL SERIES
4" LED RECESSED RETROFIT

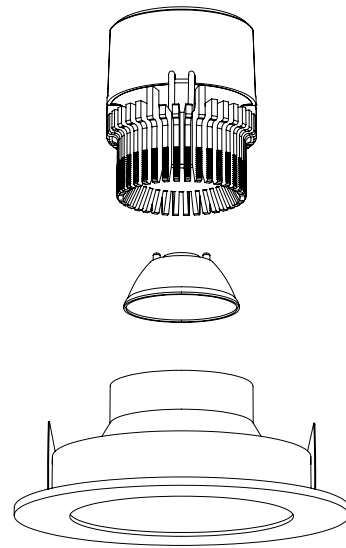






PEARL

4" LED RETROFIT



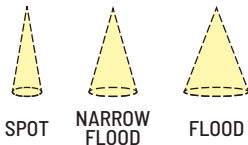
Pearl Recessed LED Retrofit luminaires are the high-end, quality solution for easy LED retrofitting in residential and light commercial applications. With a maximum height of just 4-1/2", Pearl can be retrofitted in most 4" IC and non-IC housings—including shallow! The dimmable Pearl luminaires produce over 1000 lumens with Cree COB LEDs or 800 lumens with Comfort Dim technology. Available in a beautiful array of fixed and adjustable styles in ten finishes, each Pearl includes three field changeable optics for maximum design control. Optional accessories can further customize the fixtures.

PEARL RETROFIT SYSTEM

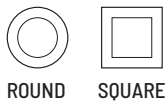
Medium Base Socket Adapter
included with each luminaire for easy retrofitting in 4" recessed housings

Integral Driver
Triac / ELV dimming

Die-Cast Aluminum Heat Sink
with Cree® COB technology



Field Changeable Optics
Each module includes spot, narrow flood and flood optics



4" Round or Square Trims
12 styles and 10 finishes

White Light Dimming maintains consistent kelvin temperature across the dimming range, keeping colors consistent and natural.

Comfort Dim creates an intimate atmosphere by color tuning the temperature from a bright 3100K to a rich and warm 2000K as power is reduced.



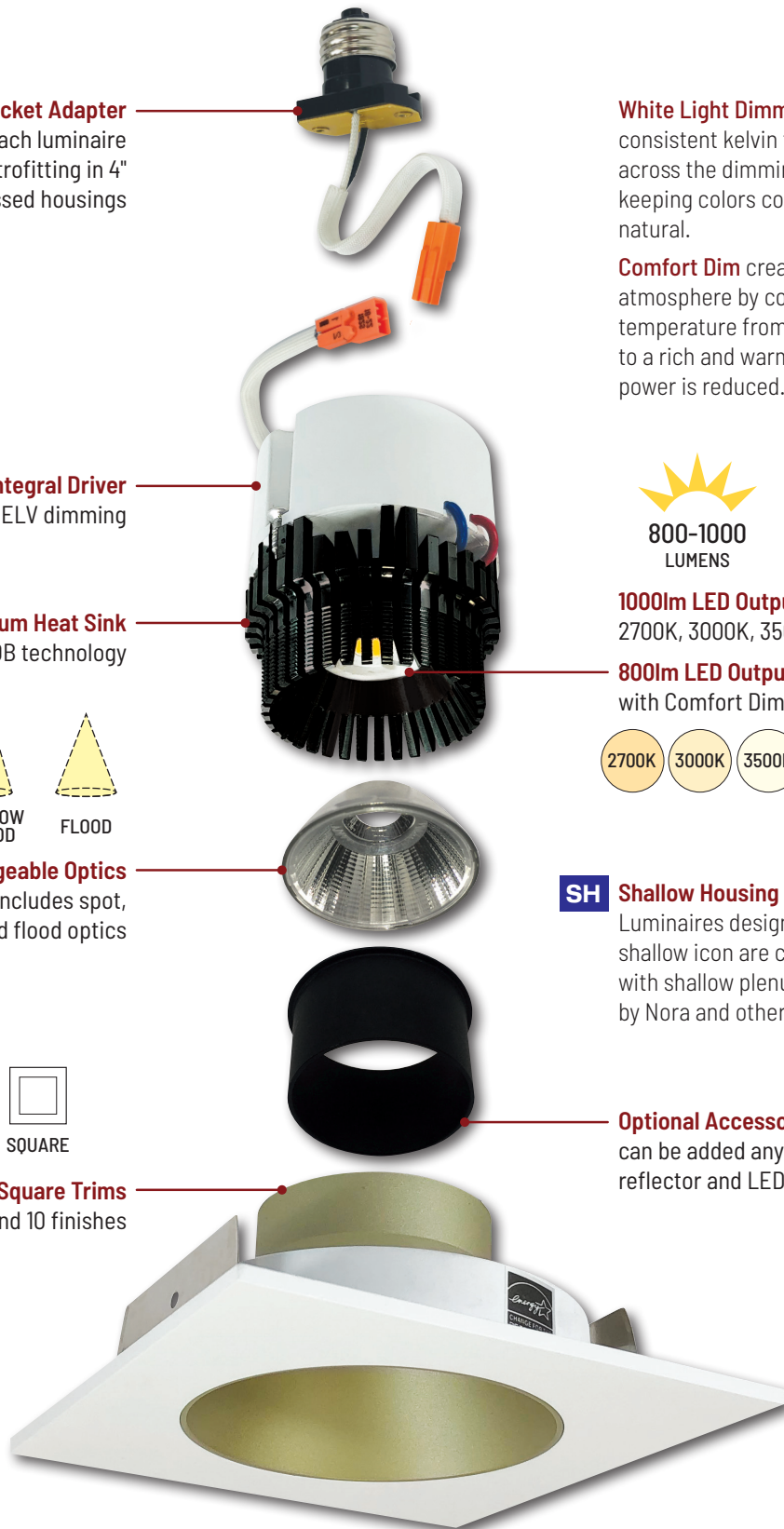
1000lm LED Output
2700K, 3000K, 3500K, 4000K

800lm LED Output
with Comfort Dim technology



SH Shallow Housing Compatible
Luminaires designated with the shallow icon are compatible with shallow plenum housings by Nora and others.

Optional Accessories
can be added anytime between reflector and LED module





PEARL SERIES 4" LED RETROFIT · DELIVER OVER 1000LM

Pearl LED Retrofit series is cULus classified for use in existing IC or non-IC housings manufactured by Nora and others. The 4" retrofit luminaires produce up to 1000 lumen output with optimal visual cut-off. Downlight and adjustable styles aim the light source.

ELECTRICAL:

Voltage: 120V

Lumens / Wattage: 1000lm / 12W (800lm w/ Comfort Dim)

Color Rendering Index: 90+ CRI

Color Temperature:

2700K, 3000K, 3500K, 4000K or Comfort Dim (3100K-2000K)

Dimming: Triac or ELV

COMFORT DIM: Comfort Dim color tunes the

temperature from a bright 3100K, to a romantic and comfortable 2000K on a gradual, even curve. Available in 800lm only.

CONSTRUCTION:

Reflector/Module: Die-cast aluminum reflectors are threaded to mount LED module securely and dissipate heat away from light source. Three field-changeable optics are included with each luminaire: spot, narrow flood and flood (installed).

INSTALLATION: Compatible with Nora housings listed and most 4" IC and non-IC housings by others.

RETROFIT: Pearl retrofit series includes medium base socket adapter (NRA-212SM) for retrofitting into existing medium base downlight housings. GU24 socket adapter is available for use with GU24 housings, must specify NRA-212SM.

LISTING & WARRANTY:

- cULus Classified for Wet Location (Adjustables are rated for damp locations)
- ENERGY STAR certified
- ROHS compliant
- 5 Year Limited Warranty
- Certified to the high efficacy requirements of California Title 24 JA8-2019

COMPATIBLE HOUSINGS:

Fire Box	
NFBIC-4LMRATA	ICAT LED Dedicated
NFBIC-427LMRATA	Shallow ICAT LED Dedicated
NFBIC-4INCATA	ICAT Line Voltage
New Construction	
NSIC-4LMRAT	Max. Adjust. ICAT LED Dedicated
NHIC-4LMRAT	ICAT LED Dedicated
NHIC-4LMRAT/277	ICAT LED Dedicated, 277V (includes step-down transformer)
NHIC-427LMRAT	Shallow ICAT LED Dedicated
NSIC-401QAT	ICAT Line Voltage
NS-401QAT	AT Line Voltage
NHIC-4G24AT ¹	ICAT GU24
Remodel	
NHRIC-4LMRAT	ICAT LED Dedicated
NHRIC-427LMRAT	Shallow ICAT LED Dedicated
NSRIC-404QAT	ICAT Line Voltage
NSR-404QAT	AT Line Voltage
NHRIC-4G24AT ¹	ICAT GU24

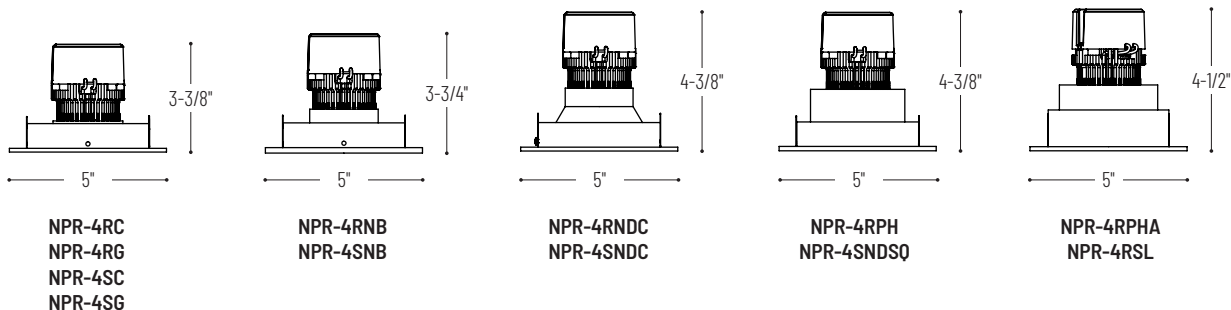
¹Requires NRA-212SM - GU24 adapter

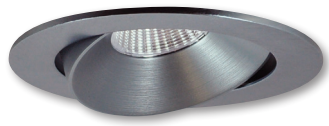


PEARL 4" LED RETROFIT

APERTURE / SHAPE	REFLECTOR TYPE	COLOR TEMPERATURE / LUMENS	FINISH
NPR-4R 4" Round	C Adjustable Cone SH	27X 2700K / 1000lm	BB Black / Black Flange
NPR-4S 4" Square	G Adjustable Gimbal SH	30X 3000K / 1000lm	BMPW Black / Matte Powder White Flange
	NB Non-Adj. Bullnose	35X 3500K / 1000lm	BW Black / White Flange
	NDC Reflector w/Round Aperture	40X 4000K / 1000lm	BZ Bronze / Bronze Flange
	PH Non-Adj. Pinhole	CDX Comfort Dim / 800lm	CHMPW Champagne Haze / Matte Powder White Flange
	PHA Adjustable Pinhole		CMPW Specular Clear / Matte Powder White Flange
	SL Adjustable Slot Aperture		HW Haze / White Flange
	NDSQ Reflector w/Square Aperture		HZMPW Haze / Matte Powder White Flange
			MPW Matte Powder White / Matte Powder White Flange
			NN Natural Metal / Nat. Metal Flange
			WW White / White Flange

Example: **NPR-4RC30XWW** - 4" Round Adjustable Cone Retrofit, 3000K / 1000lm, White with White Flange





SH NPR-4RC
 4" Round Adjustable Cone Regress
 BB, BW, BZ, CHMPW, CMPW,
 HW, HZMPW, MPW, NN, WW
 10°-35° Adjustable (determined by housing)



NPR-4RNB
 4" Round Bullnose
 BB, BZ, MPW, NN, WW
 Non-Adjustable



NPR-4RPH
 4" Round Pinhole
 BB, BMPW, HZMPW, MPW
 Non-Adjustable



SH NPR-4SC
 4" Square Adjustable Cone Regress
 BB, BW, BZ, CHMPW, CMPW,
 HW, HZMPW, MPW, NN, WW
 10°-35° Adjustable (determined by housing)



NPR-4SNB
 4" Square Bullnose
 BB, BZ, MPW, NN, WW
 Non-Adjustable



NPR-4RPHA
 4" Round Adjustable Pinhole
 BB, BMPW, HZMPW, MPW, WW
 30° Adjustable



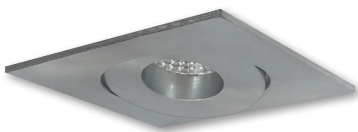
SH NPR-4RG
 4" Round Adjustable Gimbal
 BB, BZ, MPW, NN, WW
 10°-35° Adjustable (determined by housing)



NPR-4RND
 4" Round Reflector w/ Round Aperture
 BB, BW, BZ, CHMPW, CMPW,
 HW, HZMPW, MPW, NN, WW
 Non-Adjustable



NPR-4RSL
 4" Round Slot Aperture
 BB, BMPW, HZMPW, MPW
 30° Adjustable



SH NPR-4SG
 4" Square Adjustable Gimbal
 BB, BZ, MPW, NN, WW
 10°-35° Adjustable (determined by housing)



NPR-4SND
 4" Square Reflector w/ Round Aperture
 BB, BW, BZ, CHMPW, CMPW,
 HW, HZMPW, MPW, NN, WW
 Non-Adjustable



NPR-4SND SQ
 4" Square Reflector w/ Square Aperture
 BB, BW, BZ, CHMPW, HN, HW, HZMPW, MPW, WW
 Non-Adjustable

SH designates reflectors compatible with shallow housings

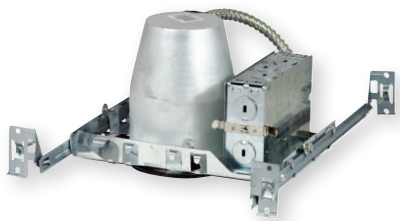
REFLECTOR FINISHES



PEARL SERIES COMPATIBLE NORA HOUSINGS

RETROFIT FOR ANY APPLICATION

LED Retrofit luminaires are compatible with most IC and non-IC housings by Nora and others including shallow plenum. When retrofitting into a shallow housing, specify Pearl reflector designated with SH icon.



New Construction Housings

NHIC-4LMRAT ICAT LED Dedicated
NHIC-4LMRAT/277 ICAT LED Dedicated, 277V
NS-401QAT AT Line Voltage

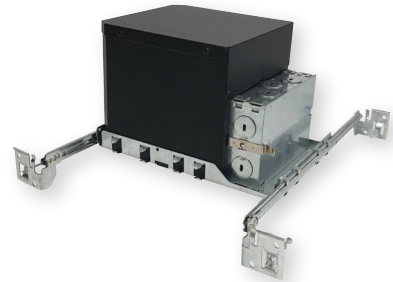
New construction applications with standard plenum ceilings.



Shallow New Construction Housings

SH NHIC-427LMRAT Shallow ICAT LED Dedicated

3-1/2" IC Air-Tight Shallow new construction housing allows for installations in shallow plenums.



Maximum Adjustability ICAT Housing

NSIC-4LMRAT Max Adjustability ICAT LED Dedicated

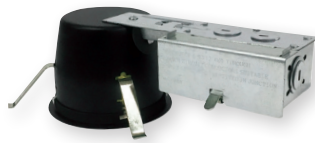
New construction housing allows reflectors to adjust up to 35°. Accommodates ceilings up to 1.75" thick with NSIC-4EXTC2 collar.



Remodel Housings

NHRIC-4LMRAT ICAT LED Dedicated
NSRIC-404QAT ICAT Line Voltage
NSR-404QAT AT Line Voltage
NHRIC-4G24AT ICAT GU24 (req. NRA-212SM)

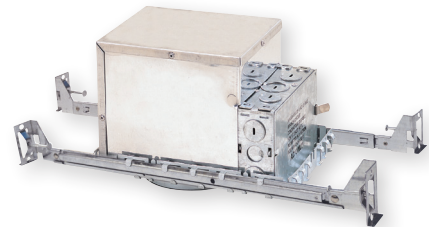
Remodel applications for standard plenum ceilings.



Shallow Remodel Housings

SH NHRIC-427LMRAT Shallow ICAT LED Dedicated

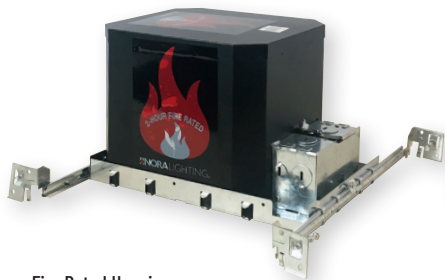
3-1/2" IC Air-Tight Shallow remodel housing allows for installations in existing shallow plenums.



New Construction ICAT Double Wall Housing

NSIC-401QAT ICAT Line Voltage

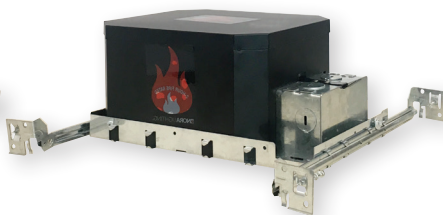
Rated for direct contact with insulation (not spray foam or combustible materials).



Fire Rated Housings

NFBIC-4LMRATA Fire Rated LED Dedicated
NFBIC-4INCATA Fire Rated Line Voltage

cULus listed housing is fire rated for a minimum of two hours protection.



Shallow Fire Rated Housings

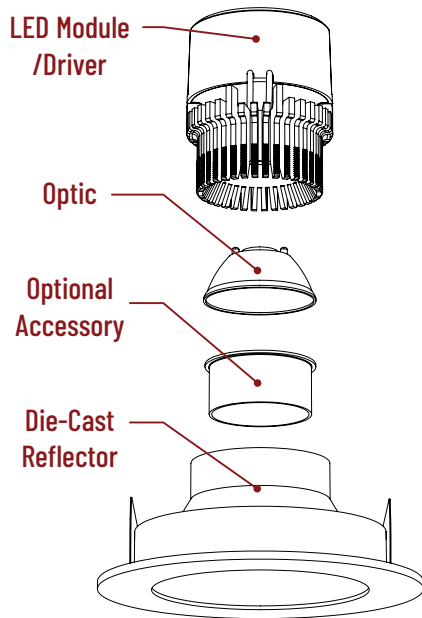
SH NFBIC-427LMRATA Shallow Fire Rated LED Dedicated

4-13/16" Fire rated new construction housing allows for installations in shallow plenums. cULus listed housing is fire rated for a minimum of two hours protection.

PEARL SERIES OPTICS AND ACCESSORIES

FIELD CHANGEABLE OPTICS

Pearl reflectors include spot, narrow flood and flood optics. Optics can be changed in the field by removing LED module from die-cast reflector. Premium TIR optics are not compatible with Comfort Dim LED modules.



Frosted Filter-Optic

- NIO-REFL15FR** 15° Reflector
- NIO-REFL25FR** 25° Reflector
- NIO-REFL38FR** 38° Reflector
- NIO-REFL60FR** 60° Reflector

Optic assemblies include specified optic and frosted lens. Frosted lenses can be installed with other optics.



Premium TIR Optics

- NIO-REFLTIR15** Premium 15° TIR Optic
- NIO-REFLTIR25** Premium 25° TIR Optic

Premium TIR (total internal reflection) optics create optimal spot and narrow flood beam spreads. Not compatible with Comfort Dim (CDX) LED module.

ACCESSORIES

Pearl accessories can be added at any point in the design process. Accessories easily install between LED module and die-cast reflector. Luminaire will accommodate (1) hex louver and (1) collar accessory, no accessory holder required.



Translucent Deco Collar

- NIO-AS14(color)** 5/8" (15mm) depth
- NIO-AS19(color)** 3/4" (19mm) depth
- NIO-AS26(color)** 1" (24mm) depth

FINISH: **BLU** Blue; **FR** Frost; **AM** Amber; **R** Red

Translucent collars color the aperture with the specified color while producing white general light. Collars are available in different lengths. Use to add interest, create a theme, match a theme or define a space.

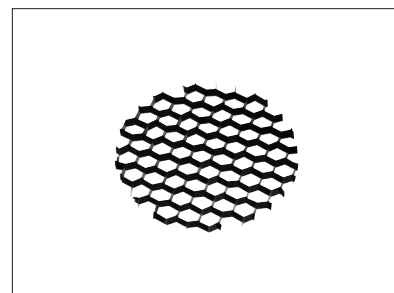


Opaque Collar Snoot

- NIO-AS14(color)** 5/8" (15mm) depth
- NIO-AS19(color)** 3/4" (19mm) depth
- NIO-AS26(color)** 1" (24mm) depth

COLOR: **BLK** Black; **MPW** Matte Powder White; **WH** White

Opaque snoot greatly reduces aperture brightness while preserving light output. (Note: Black snoot will reduce light).



Hex Cell Louver

NIO-HC

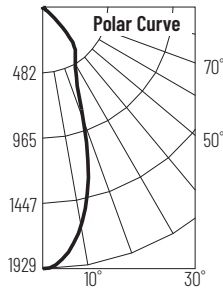
Hex cell louver subtly reduces aperture brightness. It will also reduce light output by about 20%.

PEARL SERIES PHOTOMETRICS

ADJUSTABLE CONE: 1000LM / 3000K / 38° NFL

Item Number: NPR-4RC30XXWW

Lumens: 1275lm Wattage: 11.63W Efficacy: 110lpw



Zonal Lumen Summary		
Zone	Lumens	% Luminaire
0-30	810	63.5
0-40	1049	82.2
0-60	1256	98.5
0-90	1272	99.8

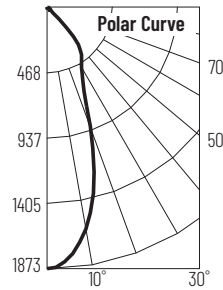
Candela Table	
Vertical Angles	Candela
0	1929
15	1850
25	598
35	425
45	212

Illuminance at a Distance		
Distance from Luminaire	FC at Nadir	Beam Diameter
4'	121fc	2'-10"
6'	53.6fc	4'-1"
8'	30.1fc	5'-6"
10'	19.3fc	6'-11"
12'	13.4fc	8'-4"

BULLNOSE: 1000LM / 3000K / 39° NARROW FLOOD

Item Number: NPR-4RNB30XXWW

Lumens: 1258lm Wattage: 11.68W Efficacy: 108lpw



Zonal Lumen Summary		
Zone	Lumens	% Luminaire
0-30	817	65
0-40	1085	86.3
0-60	1235	98.2
0-90	1255	99.8

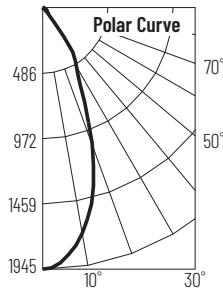
Candela Table	
Vertical Angles	Candela
0	1873
15	1302
25	622
35	432
45	161

Illuminance at a Distance		
Distance from Luminaire	FC at Nadir	Beam Diameter
4'	117fc	2'-10"
6'	52fc	4'-4"
8'	29.3fc	5'-8"
10'	18.7fc	7'-1"
12'	13fc	8'-6"

ROUND REFLECTOR: 1000LM / 3000K / 43° NFL

Item Number: NPR-4RND30XXWW

Lumens: 1194lm Wattage: 11.67W Efficacy: 102lpw



Zonal Lumen Summary		
Zone	Lumens	% Luminaire
0-30	901	75.5
0-40	1094	91.6
0-60	1166	97.6
0-90	1191	99.8

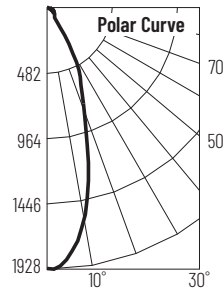
Candela Table	
Vertical Angles	Candela
0	1945
15	1441
25	705
35	335
45	55

Illuminance at a Distance		
Distance from Luminaire	FC at Nadir	Beam Diameter
4'	122fc	3'-1"
6'	54fc	4'-8"
8'	30.4fc	6'-4"
10'	19.4fc	7'-10"
12'	13.5fc	9'-5"

ADJUSTABLE GIMBAL: 1000LM / 3000K / 36° NFL

Item Number: NPR-4RG30XXWW

Lumens: 1091lm Wattage: 11.66W Efficacy: 94lpw



Zonal Lumen Summary		
Zone	Lumens	% Luminaire
0-30	761	69.7
0-40	868	79.5
0-60	995	91.2
0-90	1088	99.8

Candela Table	
Vertical Angles	Candela
0	1924
15	1196
25	583
35	157
45	81

Illuminance at a Distance		
Distance from Luminaire	FC at Nadir	Beam Diameter
4'	120fc	2'-7"
6'	53.4fc	3'-11"
8'	30.1fc	5'-2"
10'	19.2fc	6'-6"
12'	13.4fc	7'-10"





NORA LIGHTING, INC.
6505 Gayhart St.
Commerce, CA 90040
TEL 323.767.2600
FAX 323.722.3677
www.NoraLighting.com

DOMESTIC FACILITIES:
Atlanta, GA
Cincinnati, OH
Dallas, TX
Denver, CO
Detroit, MI
Los Angeles, CA
Louisville, KY
Nashville, TN
New York, NY

INTERNATIONAL SALES:
6505 Gayhart St.
Commerce, CA 90040
TEL 323.767.2600
FAX 323.722.3677

The products shown in this catalog are covered by USA and International patents. Specifications subject to change without notice.