



LOCATION		DATE
PREPARED BY		QUANTITY
COMMENTS		FIXTURE TYPE
CATALOG NUMBER		

Ideal Overbed IDB Series

Features

Contemporary three lamp T8 wall mount senior care overbed light. Choose from distinctive faux wood panels with a brushed nickel accent or brushed nickel finish. White frosted acrylic diffuser. The Ideal provides both ambient and task light with a four-way pull switch, standard (120 volt only).

Construction

The ballast/wiring channel is formed from 22-gauge steel and is provided with obround mounting slots and wiring access. An internal divider provides separate lamp compartments for controlled up light and down light. Fixture can mount horizontally only. Power connections can be made in the fixture wiring channel or in a standard junction box (not included).

Finish

All faux wood parts are finished in Light Oak or Mahogany. All metal parts are finished in plated brushed nickel. Internal housing is finished in a lighting grade baked white enamel.

Diffuser

Diffuser is white frosted acrylic, 0.090" thick. Frame mounts to electrical channel with two decorative screws.

Electrical

This unit is wired with two UL listed electronic high power factor instant start ballasts for one up, two down T8 lamps at 120V- 50/60 Hz AC operation. Four position, three circuit pull switch (on up, on down, on both, all off) are standard and located toward the right end. LED nightlight and on/off pull switch is included.

Lamping

For use with (3) T8 linear lamps, not included.

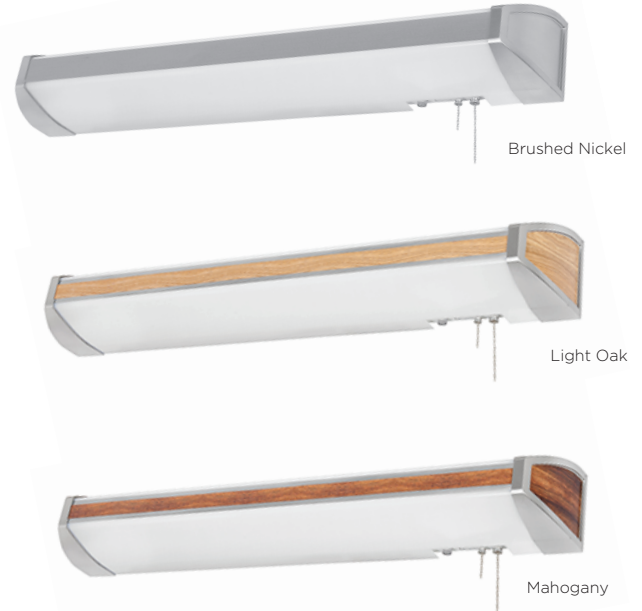
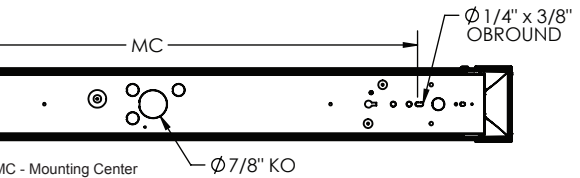
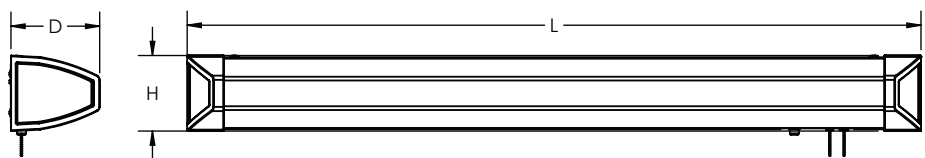
Certification

All fixtures are cULus listed for indoor damp locations.

Options (Consult Factory)

120-277V universal voltage available without switch and nightlight.

Specifications and dimensions
subject to change without notice.



Ordering Information:

Brushed Nickel	Light Oak	Mahogany	Qty.	Lamp	H	L	D	MC
IDB325E8BN	IDB325E8LK	IDB325E8MH	3	F25T8	5-3/8"	39-7/8"	6-1/4"	26-3/4"
IDB332E8BN	IDB332E8LK	IDB332E8MH	3	F32T8	5-3/8"	51-7/8"	6-1/4"	38-3/4"