

# WINDSOR

## 1921RK

### EXTRA LARGE POST OR PIER MOUNT LANTERN

Windsor combines elegant details and decorative cast detailing into its cast aluminum construction. The River Rock finish and clear water glass add to its majestic style.

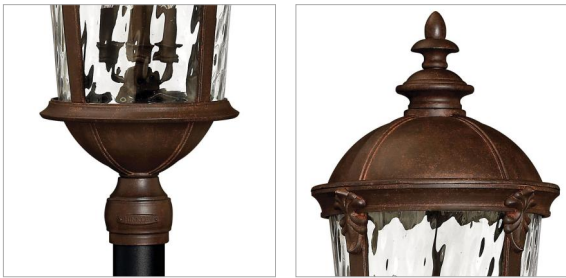


DETAILS	
FINISH:	River Rock
MATERIAL:	Aluminum
GLASS:	Clear Water Glass
DIMMABLE:	YES, WITH DIMMABLE LAMP (NOT INCLUDED)

DIMENSIONS	
WIDTH:	14.3"
HEIGHT:	34.8"
WEIGHT:	22lb

LIGHT SOURCE	
LIGHT SOURCE:	Socketed
WATTAGE:	6-5w Cand. LED, 40w Equiv.
VOLTAGE:	120v

SHIPPING	
CARTON LENGTH:	18
CARTON WIDTH:	18
CARTON HEIGHT:	30
CARTON WEIGHT:	28



#### PRODUCT DETAILS:

- Suitable for use in wet (outdoor direct rain) locations as defined by NEC and CEC. Meets United States UL Underwriters Laboratories & CSA Canadian Standards Association Product Safety Standards
- Our Estate Collections boast a breadth of fixtures defined by coordinating composition, enduring architecture, and time-honored craftsmanship, designed to meet the needs of expansive properties with extended outdoor living spaces. From the entrance of your driveway to the depths of your backyard, these collections provide cohesive design for stately exteriors.
- 2-year finish warranty
- Classic lines and heritage details complement traditional architecture

# HINKLEY

HINKLEY  
33000 Pin Oak Parkway  
Avon Lake, OH 44012

PHONE: (440) 653-5500  
Toll Free: 1 (800) 446-5539

[hinkley.com](http://hinkley.com)