

# CHANDELIER 7855-\_\_\_\_ S TRIM DIAGRAM

(Finish Option)



2 Lights  
 Diameter: 12"  
 Body Length: 10"  
 Extension: 5-1/2"  
 Hanging Weight: 3 lbs.

**T**HIS DESIGN IS THE PROPRIETARY TRADE DRESS/TRADemark OF SCHONBEK WORLDWIDE LIGHTING INC.

## SCHONBEK®

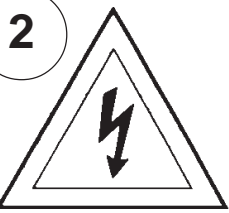
**See diagram on back page  
 Follow steps in exact order  
 Save this trim diagram for future reference**

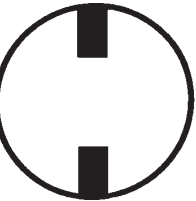
**IMPORTANT**  
**1** Person who opens carton should record the following information for future service.  
 CODE # \_\_\_\_\_ Four-digit number on outside of carton.  
 PACKER # \_\_\_\_\_ See crystal package label.  
 ORDER # \_\_\_\_\_ See crystal package label.

SCHONBEK IS A WORLD LEADER IN CHANDELIER DESIGN. PATENTS INCLUDE:  
 #5,460,269, #D397,494, #D397,495 & #D435,686

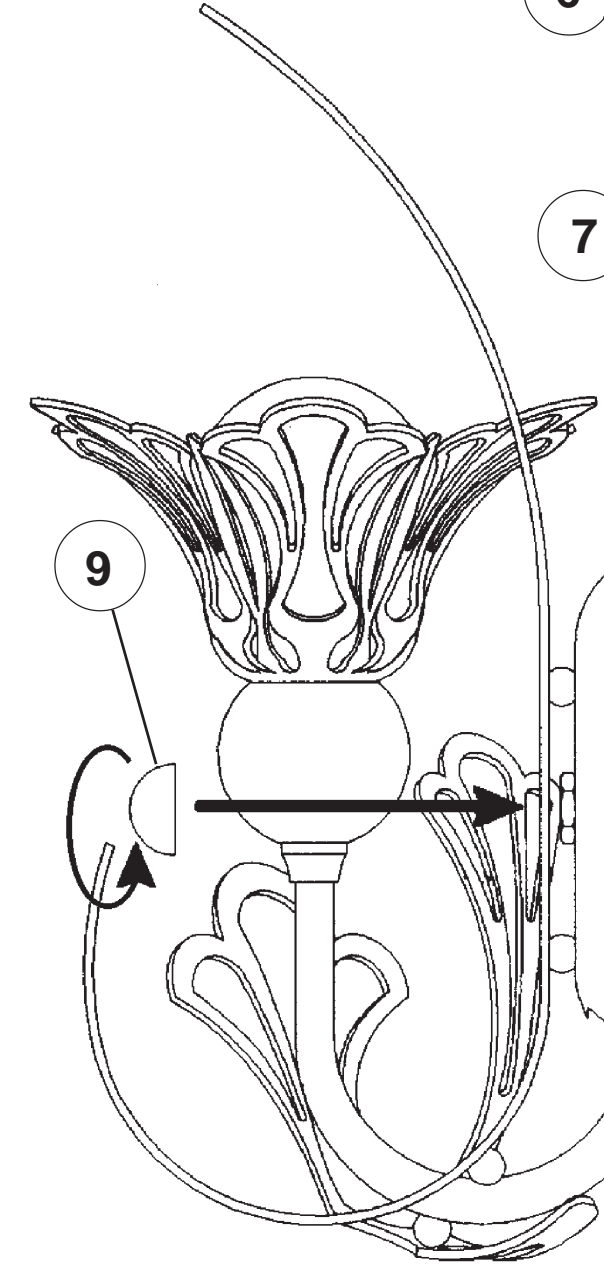
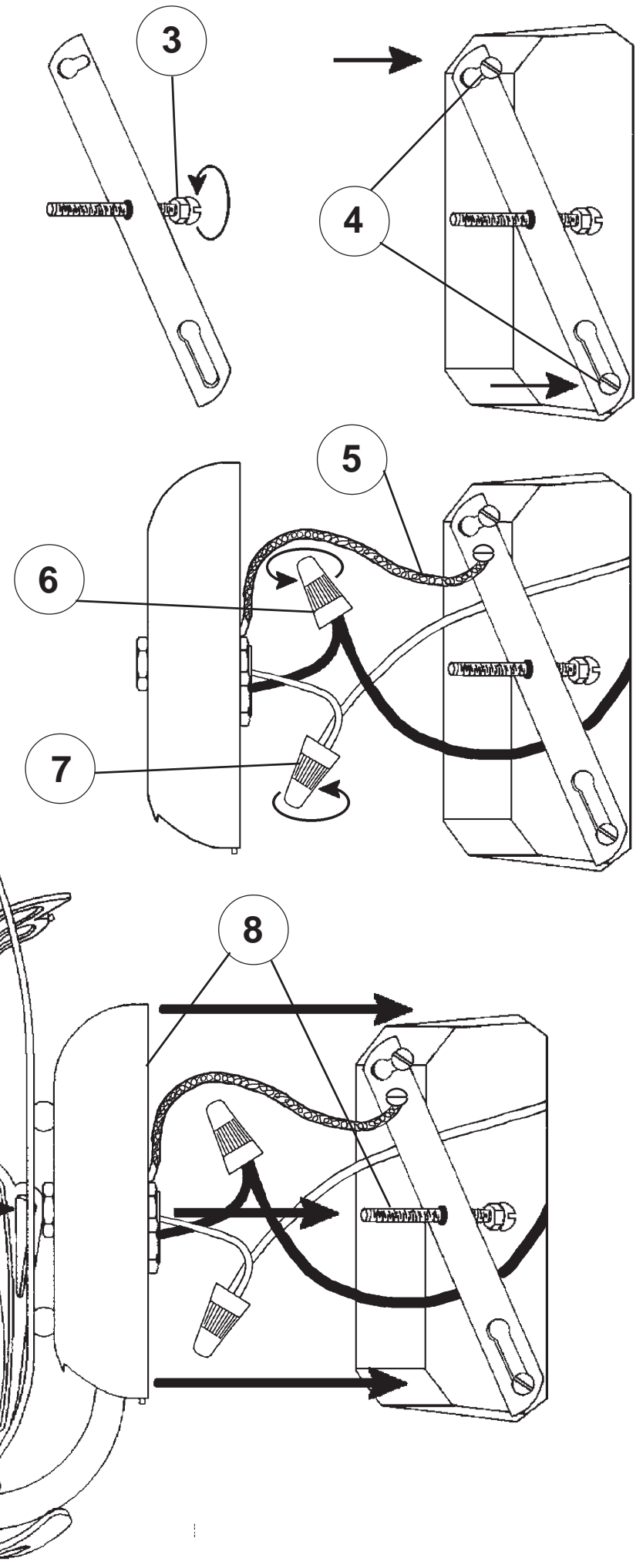
### Instructions for electrician STEPS 2 - 9

**WARNING:**

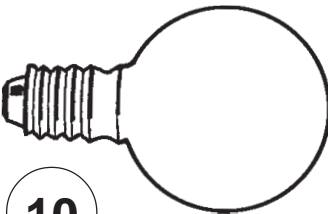
**2**   
 Electrical Danger

  
 Turn Power Off

All electrical components must be installed by a licensed electrician in accordance with the National Electric Code and the appropriate local electrical codes.

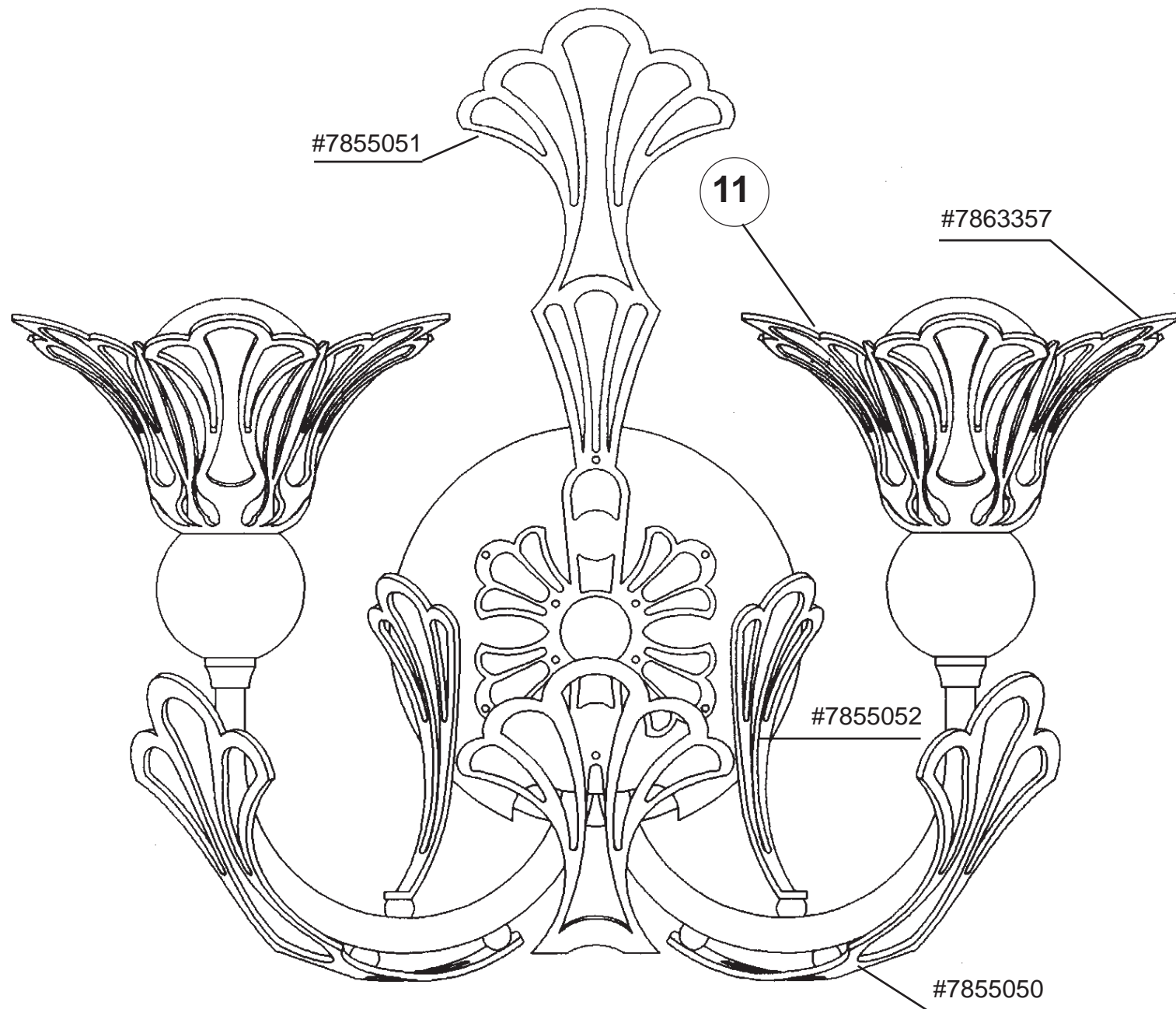


**Instructions for crystal trimming**  
**STEPS 10 - 11**



**10**

You will need 2 - G16-1/2  
 25 Watts Recommended  
 40 Watts Max



**PART NUMBERS FOR  
 SPARE PARTS**

