

NORA[®]

LIGHTING



M2 SERIES

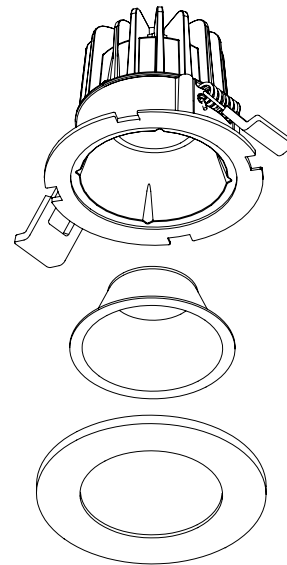
2" LED RECESSED and
MULTIPLE LIGHTING SYSTEM





M2

2" MINI RECESSED LED DOWNLIGHT



M2 Series of high quality miniature recessed LED downlights are ideal for remodel or new constructions in residential and light commercial applications. M2 luminaires require no housing, making installation easy. Simply cut the ceiling, wire the junction box and insert the luminaire in the ceiling cavity. The IC Air-Tight rated luminaires are available in round or square apertures in a variety of styles in matte powder white or black finish. A range of accessories allows customization to desired appearance. M2 luminaires deliver up to 850 lumens in 2700K or 3000K at 90+ CRI. New construction rough-in plate available.

M2 DOWNLIGHT SERIES


No Housing Required!
M2 Recessed Downlights come as a complete unit with heat sink, quick connect and pre-wired junction box.


400-850 LUMENS

Up to 850lm LED Output
400lm, 600lm and 850lm LED packages


2700K 3000K

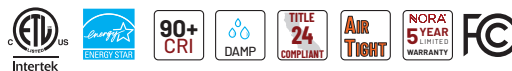
90+ CRI
2700K or 3000K


ROUND SQUARE

2" Round or Square Trims
Available in Matte Black or Matte Powder White. Reflector matches trim finish.

Quick Connects
Allows for extended lengths

Customizable
Additional styles can be configured with optional accessory trims, reflector and baffle inserts. The trim face easily unscrews from the unit to accept the accessories. Accessories may be used in combination.



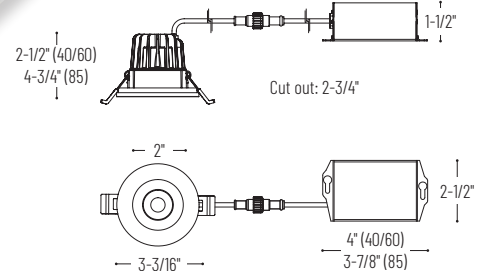


2" M2 LED DOWNLIGHT



NM2-2RDC40 400lm | **NM2-2RDC60** 600lm

NM2-2RDC85 850lm



2" M2 LED RECESSED OPEN DOWNLIGHT

SERIES	LUMENS / WATTAGE	CCT / CRI	FINISH
NM2-2RDC 2" Round Open Downlight	40 400lm / 6W	27 2700K / 90 CRI	BB Matte Black
	60 600lm / 8W	30 3000K / 90 CRI	MPW Matte Powder White
	85 850lm / 10W		

OPTIONAL TRIM ACCESSORIES

NM2-2REFL Reflector Insert for NM2-2RDC	B Matte Black HZ Haze
NM2-2BAF Baffle Insert for NM2-2RDC	B Matte Black
NM2-2RPH Round Pinhole Trim for NM2-2RDC	MPW Matte Powder White
NM2-2RW Round Wall Wash for NM2-2RDC	
NM2-2SDT Square Trim for NM2-2RDC	

Example: **NM2-2RDC6030BB + NM2-2REFLHZ + NM2-2SDTB** -

2" M2 Round Open Downlight, 600lm / 8W, 3000K / 90 CRI, Matte Black finish + Haze Reflector Insert + Matte Black Square Trim

M2 downlight series features quality and convenience with easy installation for insulated or non-insulated applications. Luminaires can be configured into multiple options with trim accessories and produces over 850 lumens.

ELECTRICAL:

Voltage: 120V

Lumens / Wattage: 400lm / 6W; 600lm / 8W; 850lm / 10W

Color Temperature: 2700K or 3000K

Color Rendering Index: 90+ CRI

Beam Spread: 36° Flood

Dimming: Triac or ELV

CONSTRUCTION: Die-cast aluminum trims available in matte black or matte powder white finish. Open downlight includes a reflector with the same finish as trim. Optional field changeable reflector and baffle inserts and trim styles are available.

AIR FLOW RESTRICTION: Luminaire has factory installed gasket to restrict airflow from room into ceiling plenum to <2CFM (cubic feet per minute) in accordance with ASTM-283 Air-Tight requirements.

CLEARANCE: IC rated luminaires are rated for direct contact with insulation (not spray foam insulation), no minimum clearance is required.

JUNCTION BOX: Prewired junction box includes quick connect to LED fixtures for ease of installation. Junction box includes two 7/8" knockouts and snap on cover with 7" quick connect wire. Luminaire includes 5" (400lm/600lm) or 4" (850lm) quick connect wire.

MOUNTING: No housing is required, two tensions steel spring clips secure luminaire to ceiling. Accommodates ceiling thickness up to 3/4". New construction frame-in kit is available, see accessories.

OPTIONAL ACCESSORIES:

NM2-2BAF Baffle Insert for NM2-2RDC

NM2-2REFL Reflector Insert for NM2-2RDC

NM2-2RPH Round Pinhole Trim for NM2-2RDC

NM2-2RW Round Wall Wash Trim for NM2-2RDC

NM2-2SDT Square Trim for NM2-2RDC

NM2-2R-F New Construction Frame-In Plate

NM2-MLS1 Multiple Lighting System One-Head Plate

NM2-MLS2 Multiple Lighting System Two-Head Plate

NM2-MLS3 Multiple Lighting System Three-Head Plate

NM2-EW-4 4' Quick Connect Linkable Extension Cable

NM2-EW-10 10' Quick Connect Linkable Extension Cable

LISTING & WARRANTY:

- cETLus Listed for Damp Locations
- ENERGY STAR certified
- 5 Year Limited Warranty
- FCC compliant
- Certified to the high efficacy requirements of California Title 24 JA8-2019



Customize your downlight with optional accessories.

Add an optional **Reflector** or **Baffle Insert** in matching or contrasting finish.
Use alone or in combination with optional trim accessory.



NM2-2REFL Reflector
(**B** Matte Black, **HZ** Haze)



NM2-2BAF Baffle
(**B** Matte Black, **MPW** Matte Powder White)



Add an optional **Trim Accessory**. Use alone or in combination with reflector or baffle inserts.



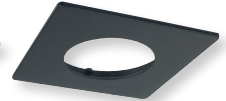
NM2-2RPH Round Pinhole Trim
(**B** Matte Black, **MPW** Matte Powder White)



NM2-2RW Round Wall Wash Trim
(**B** Matte Black, **MPW** Matte Powder White)



NM2-2SDT Square Trim
(**B** Matte Black, **MPW** Matte Powder White)

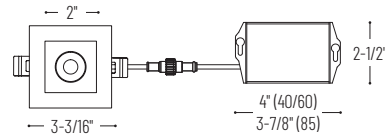
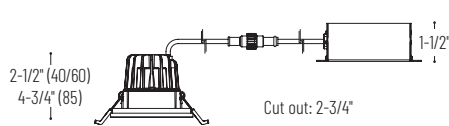


2" M2 LED SQUARE DOWNLIGHT



NM2-2SDC60 600lm

NM2-2SDC85 850lm



2" M2 LED RECESSED SQUARE DOWNLIGHT

SERIES	LUMENS / WATTAGE	CCT / CRI	FINISH
NM2-2SDC 2" Square Downlight	60 600lm / 8W	27 2700K / 90 CRI	BB Matte Black
	85 850lm / 10W	30 3000K / 90 CRI	MPW Matte Powder White

Example: **NM2-2SDC8527MPW** – 2" M2 Square Downlight, 850lm / 10W, 2700K / 90 CRI, Matte Powder White finish

M2 downlight series features quality and convenience with easy installation for insulated or non-insulated applications. Square Downlight features a square aperture for a clean and modern appearance.

ELECTRICAL:

Voltage: 120V
Lumens / Wattage: 600lm / 8W; 850lm / 10W
Color Temperature: 2700K or 3000K
Color Rendering Index: 90+ CRI
Beam Spread: 36° Flood
Dimming: Triac or ELV

CONSTRUCTION: Die-cast aluminum trims available in matte black or matte powder white finish. Downlight reflector matches trim finish.

AIR FLOW RESTRICTION: Luminaire has factory installed gasket to restrict airflow from room into ceiling plenum to <2CFM (cubic feet per minute) in accordance with ASTM-283 Air-Tight requirements.

CLEARANCE: IC rated luminaires are rated for direct contact with insulation (not spray foam insulation), no minimum clearance is required.

JUNCTION BOX: Prewired junction box includes quick connect to LED fixtures for ease of installation. Junction box includes two 7/8" knockouts and snap on cover with 7" quick connect wire. Luminaire includes 5" (600lm) or 4" (850lm) quick connect wire.

MOUNTING: No housing is required, two tensions steel spring clips secure luminaire to ceiling. Accommodates ceiling thickness up to 3/4". New construction frame-in kit is available, see accessories.

OPTIONAL ACCESSORIES:

NM2-2R-F New Construction Frame-In Plate
NM2-EW-4 4' Quick Connect Linkable Extension Cable
NM2-EW-10 10' Quick Connect Linkable Extension Cable

LISTING & WARRANTY:

- cETLus Listed for Wet Locations
- ENERGY STAR certified
- 5 Year Limited Warranty
- FCC compliant
- Certified to the high efficacy requirements of California Title 24 JA8-2019

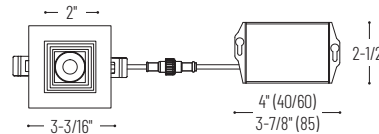
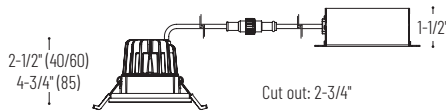


2" M2 LED SQUARE BAFFLE



NM2-2SB60 600lm

NM2-2SB85 850lm



2" M2 LED RECESSED SQUARE BAFFLE

SERIES	LUMENS / WATTAGE	CCT / CRI	FINISH
NM2-2SB 2" Square Baffle	60 600lm / 8W	27 2700K / 90 CRI	BB Matte Black
	85 850lm / 10W	30 3000K / 90 CRI	MPW Matte Powder White

Example: NM2-2RDCS8527BB - 2" M2 Square Open Downlight, 850lm / 10W, 2700K / 90 CRI, Matte Black finish

M2 downlight series features quality and convenience with easy installation for insulated or non-insulated applications. Square Baffle features a square aperture for a clean and modern appearance.

ELECTRICAL:

Voltage: 120V

Lumens / Wattage: 600lm / 8W; 850lm / 10W

Color Temperature: 2700K or 3000K

Color Rendering Index: 90+ CRI

Beam Spread: 36° Flood

Dimming: Triac or ELV

CONSTRUCTION: Die-cast aluminum trims available in matte black or matte powder white finish. Baffle matches trim finish.

AIR FLOW RESTRICTION: Luminaire has factory installed gasket to restrict airflow from room into ceiling plenum to <2CFM (cubic feet per minute) in accordance with ASTM-283 Air-Tight requirements.

CLEARANCE: IC rated luminaires are rated for direct contact with insulation (not spray foam insulation), no minimum clearance is required.

JUNCTION BOX: Prewired junction box includes quick connect to LED fixtures for ease of installation. Junction box includes two 7/8" knockouts and snap on cover with 7" quick connect wire. Luminaire includes 5" (600lm) or 4" (850lm) quick connect wire.

MOUNTING: No housing is required, two tensions steel spring clips secure luminaire to ceiling. Accommodates ceiling thickness up to 3/4". New construction frame-in kit is available, see accessories.

OPTIONAL ACCESSORIES:

NM2-2R-F New Construction Frame-In Plate

NM2-EW-4 4' Quick Connect Linkable Extension Cable

NM2-EW-10 10' Quick Connect Linkable Extension Cable

LISTING & WARRANTY:

- cETLus Listed for Damp Locations
- ENERGY STAR certified
- 5 Year Limited Warranty
- FCC compliant
- Certified to the high efficacy requirements of California Title 24 JA8-2019



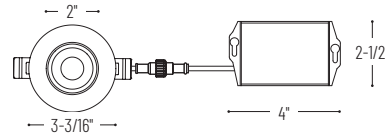
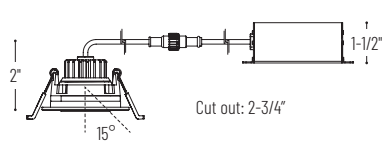
2" M2 LED RECESSED GIMBAL



NM2-2SB40 400lm
(Matte Black or Matte Powder White)

NM2-2SDC60 600lm
+ **NM2-2SGT**

NM2-2SET
Square Trim



2" M2 LED RECESSED GIMBAL

SERIES	LUMENS / WATTAGE	CCT / CRI	FINISH
NM2-2RG 2" Round Gimbal	40 400lm / 6W	27 2700K / 90 CRI	BB Matte Black
	60 600lm / 8W	30 3000K / 90 CRI	MPW Matte Powder White
OPTIONAL TRIM ACCESSORIES			
NM2-2SGT Square Trim Accessory			B Matte Black MPW Matte Powder White

Example: **NM2-2RG4027MPW** - 2" M2 Round Recessed Gimbal, 400lm / 6W, 2700K / 90 CRI, Matte Powder White finish

M2 downlight series features quality and convenience with easy installation for insulated or non-insulated applications. Luminaires can be configured into square trim with an accessory and produces over 600 lumens.

ELECTRICAL:

Voltage: 120V
Lumens / Wattage: 400lm / 6W; 600lm / 8W
Color Temperature: 2700K or 3000K
Color Rendering Index: 90+ CRI
Beam Spread: 40° Flood
Dimming: Triac or ELV

CONSTRUCTION: Die-cast aluminum trims available in matte black or matte powder white finish. Gimbal trim is adjustable up to 15°. Optional field changeable square trim is available.

AIR FLOW RESTRICTION: Luminaire has factory installed gasket to restrict airflow from room into ceiling plenum to <2CFM (cubic feet per minute) in accordance with ASTM-283 Air-Tight requirements.

CLEARANCE: IC rated luminaires are rated for direct contact with insulation (not spray foam insulation), no minimum clearance is required.

JUNCTION BOX: Prewired junction box includes quick connect to LED fixtures for ease of installation. Junction box includes two 7/8" knockouts and snap on cover with 7" quick connect wire. Luminaire includes 5" quick connect wire.

MOUNTING: No housing is required, two tensions steel spring clips secure luminaire to ceiling. Accommodates ceiling thickness up to 3/4". New construction frame-in kit is available, see accessories.

OPTIONAL ACCESSORIES:

NM2-2SGT Square Trim for NM2-2RG

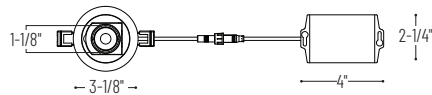
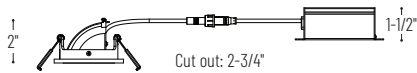
NM2-2R-F New Construction Frame-In Plate
NM2-MLS1 Multiple Lighting System One-Head Plate
NM2-MLS2 Multiple Lighting System Two-Head Plate
NM2-MLS3 Multiple Lighting System Three-Head Plate
NM2-EW-4 4' Quick Connect Linkable Extension Cable
NM2-EW-10 10' Quick Connect Linkable Extension Cable

LISTING & WARRANTY:

- cETLus Listed for Damp Locations
- ENERGY STAR certified
- 5 Year Limited Warranty
- FCC compliant
- Certified to the high efficacy requirements of California Title 24 JA8-2019



2" M2 LED ELBOW



2" M2 LED RECESSED ELBOW

SERIES	LUMENS / WATTAGE	CCT / CRI	FINISH
NM2-2R270 2" Round Elbow	50 500lm / 6W	27 2700K / 90 CRI 30 3000K / 90 CRI	BB Matte Black MPW Matte Powder White
OPTIONAL TRIM ACCESSORIES			
NM2-2SET Square Trim for NM2-2R270			B Matte Black MPW Matte Powder White

Example: **NM2-2R2705027BB** - 2" M2 Round Elbow, 500lm / 6W, 2700K / 90 CRI, Matte Black finish

M2 downlight series features quality and convenience with easy installation for insulated or non-insulated applications. Luminaire can be configured into square trim with an accessory and produces over 500 lumens.

ELECTRICAL:

Voltage: 120V
Lumens / Wattage: 500lm / 6W
Color Temperature: 2700K or 3000K
Color Rendering Index: 90+ CRI
Beam Spread: 33° Spot, 48° Narrow Flood
Dimming: Triac or ELV

CONSTRUCTION: Die-cast aluminum trims available in matte black or matte powder white finish. Rotates 345° horizontally and extends up to 70°. Optional field changeable square trim is available.

FIELD CHANGEABLE OPTICS: Each luminaire includes a spot (installed) and narrow flood optic. Optics can be easily replaced in the field.

AIR FLOW RESTRICTION: Luminaire has factory installed gasket to restrict airflow from room into ceiling plenum to <2CFM (cubic feet per minute) in accordance with ASTM-283 Air-Tight requirements.

CLEARANCE: IC rated luminaires are rated for direct contact with insulation (not spray foam insulation), no minimum clearance is required.

JUNCTION BOX: Prewired junction box includes quick connect to LED fixtures for ease of installation. Junction box includes two 7/8" knockouts and snap on cover with 7" quick connect wire. Luminaire includes 6" quick connect wire.

MOUNTING: No housing is required, two tensions steel spring clips secure luminaire to ceiling. Accommodates ceiling thickness up to 3/4". New construction frame-in kit is available, see accessories.

OPTIONAL ACCESSORIES:

NM2-2SET Square Trim for NM2-2R270

NM2-2R-F New Construction Frame-In Plate
NM2-MLS1 Multiple Lighting System One-Head Plate
NM2-MLS2 Multiple Lighting System Two-Head Plate
NM2-MLS3 Multiple Lighting System Three-Head Plate
NM2-EW-4 4' Quick Connect Linkable Extension Cable
NM2-EW-10 10' Quick Connect Linkable Extension Cable

LISTING & WARRANTY:

- cETLus Listed for Damp Locations
- ENERGY STAR certified
- 5 Year Limited Warranty
- FCC compliant
- Certified to the high efficacy requirements of California Title 24 JA8-2019

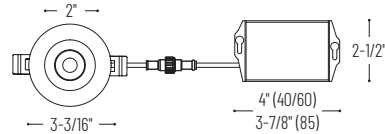
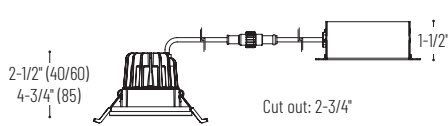


2" M2 LED LENSED DOWNLIGHT



NM2-2RDSC40 400lm | NM2-2RDSC60 600lm

NM2-2RDSC85 850lm



2" M2 LED RECESSED LENSED DOWNLIGHT

SERIES	LUMENS / WATTAGE	CCT / CRI	FINISH
NM2-2RDSC 2" Round Lensed Downlight	40 400lm / 6W	27 2700K / 90 CRI	BB Matte Black
	60 600lm / 8W	30 3000K / 90 CRI	MPW Matte Powder White
	85 850lm / 10W		

Example: NM2-2RDSC8527BB - 2" M2 Round LED Lensed Downlight, 850lm / 10W, 2700K / 90 CRI, Matte Black finish

M2 downlight series features quality and convenience with easy installation for insulated or non-insulated applications. Lensed trim and gasket allow luminaires to be installed in wet location.

ELECTRICAL:

Voltage: 120V

Lumens / Wattage: 400lm / 6W; 600lm / 8W; 850lm / 10W

Color Temperature: 2700K or 3000K

Color Rendering Index: 90+ CRI

Beam Spread: 36° Flood

Dimming: Triac or ELV

CONSTRUCTION: Die-cast aluminum trims available in matte black or matte powder white finish. Lensed downlight includes a reflector with the same finish as trim.

AIR FLOW RESTRICTION: Luminaire has factory installed gasket to restrict airflow from room into ceiling plenum to <2CFM (cubic feet per minute) in accordance with ASTM-283 Air-Tight requirements.

CLEARANCE: IC rated luminaires are rated for direct contact with insulation (not spray foam insulation), no minimum clearance is required.

JUNCTION BOX: Prewired junction box includes quick connect to LED fixtures for ease of installation. Junction box includes two 7/8" knockouts and snap on cover with 7" quick connect wire. Luminaire includes 5" (400lm/600lm) or 4" (850lm) quick connect wire.

MOUNTING: No housing is required, two tensions steel spring clips secure luminaire to ceiling. Accommodates ceiling thickness up to 3/4". New construction frame-in kit is available, see accessories.

OPTIONAL MOUNTING ACCESSORIES:

- NM2-2R-F** New Construction Frame-In Plate
- NM2-MLS1** Multiple Lighting System One-Head Plate
- NM2-MLS2** Multiple Lighting System Two-Head Plate
- NM2-MLS3** Multiple Lighting System Three-Head Plate
- NM2-EW-4** 4' Quick Connect Linkable Extension Cable
- NM2-EW-10** 10' Quick Connect Linkable Extension Cable

LISTING & WARRANTY:

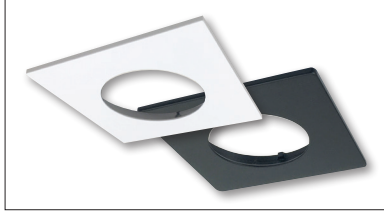
- cETLus Listed for Wet Locations
- ENERGY STAR certified
- 5 Year Limited Warranty
- FCC compliant
- Certified to the high efficacy requirements of California Title 24 JA8-2019



M2 SERIES ACCESSORIES

OPTIONAL TRIMS AND INSERTS REQUIRE A COMPATIBLE M2 DOWNLIGHT

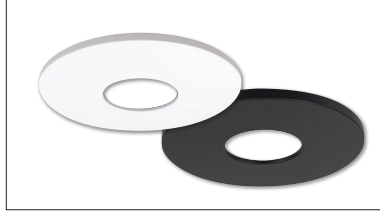
Field changeable trims and inserts may be used individually or in conjunction.



Square Trim Accessory

NM2-2SDT for Round Downlight (NM2-2RDC)
NM2-2SGT for Recessed Gimbal (NM2-2RG)
NM2-2SET for Elbow (NM2-2R270)

Matte Black or Matte Powder White finish. Trim accessory is for use with designated luminaire only.



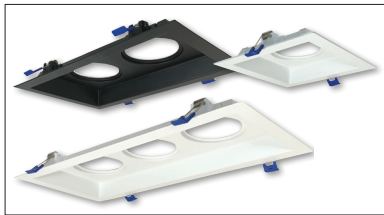
Round Pinhole Trim Accessory

NM2-2RPH for Round Downlight (NM2-2RDC)
 Matte Black or Matte Powder White finish. Trim accessory is for use with designated luminaire only.



Round Wall Wash Trim Accessory

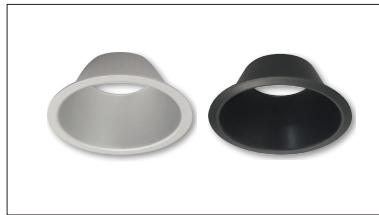
NM2-2RW for Round Downlight (NM2-2RDC)
 Matte Black or Matte Powder White finish. Trim accessory is for use with designated luminaire only.



Multiple Lighting System Plates

NM2-MLS1 MLS One Head Plate for NM2-2R
NM2-MLS2 MLS Two Head Plate for NM2-2R
NM2-MLS3 MLS Three Head Plate for NM2-2R

Matte Black or Matte Powder White finish. Multiple accessory is for use with round M2 LED luminaires.



Reflector Insert

NM2-2REFL for Round Downlight (NM2-2RDC)
 Matte Black or Haze finish. Reflector accessory is for use with designated luminaire only.



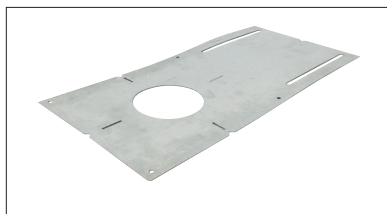
Baffle Insert

NM2-2BAF for Round Downlight (NM2-2RDC)
 Matte Black or Matte Powder White finish. Baffle accessory is for use with designated luminaire only.

MOUNTING ACCESSORIES

M2 luminaires can be installed in new construction or remodel applications.

Optional mounting accessories are available to allow for drivers to be installed further away and frame-in plate for new construction applications



New Construction Frame-In Plate

NM2-2R-F

Use for new construction pre-wiring and easier layout planning.



Quick Connect Linkable Extension Cables

NM2-EW-4 4' Cable
NM2-EW-10 10' Cable

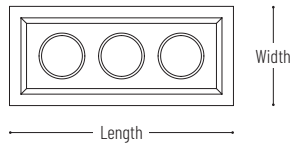
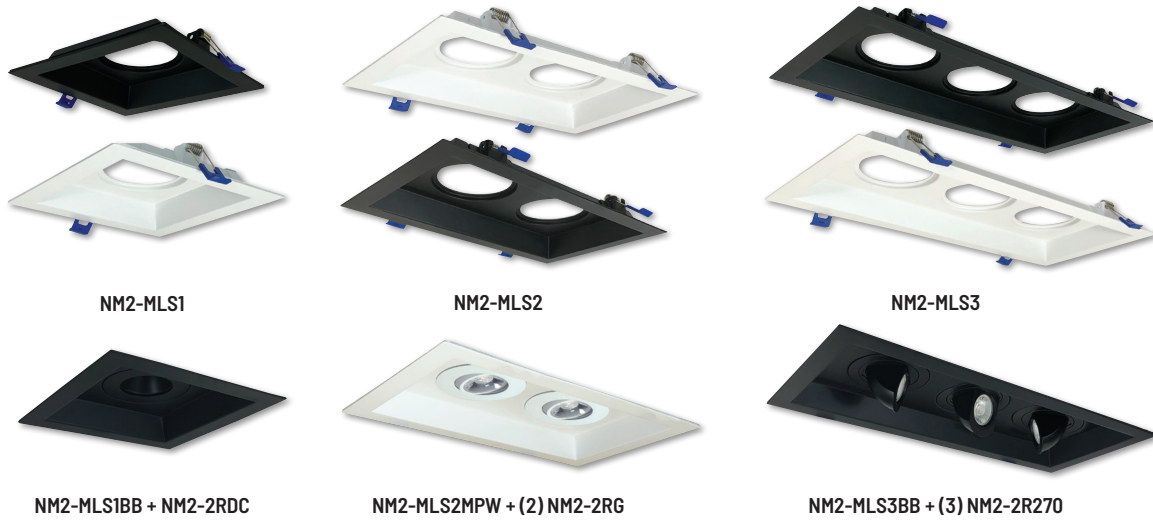
Use to extend the length between luminaire and driver enclosure. Cables may be connected together to create custom lengths. Maximum length between luminaire and driver is 40'.

M2 MODULAR MLS





M2 MULTIPLE LIGHTING SYSTEM



	NM2-MLS1	NM2-MLS2	NM2-MLS3
Cut out:	5-3/4" x 5-3/4"	10-1/8" x 5-3/4"	14-1/4" x 5-3/4"
Width:	6-7/8"	6-7/8"	6-7/8"
Length:	6-7/8"	11-1/2"	15-1/2"

M2 MULTIPLE LIGHTING SYSTEM PLATE

SERIES	NUMBER OF HEAD(S)	FINISH
NM2-MLS M2 Multiple Plate	1 One Head 2 Two Heads 3 Three Heads	BB Matte Black MPW Matte Powder White

Example: **NM2-MLS2BB** - M2 Multiple Lighting System Two Head Plate, Matte Black finish

M2 modular LED Multiple Lighting System (MLS) allows multiple LED luminaires to be installed in one recessed trim without a large housing. M2 Multiple plates are IC rated and accept one, two or three round M2 LED luminaires up to 600 lumens per head.

ELECTRICAL:

Voltage: 120V
Lumens / Wattage Per Head:
 400lm / 6W, 500lm / 6W or 600lm / 8W
Color Temperature: 2700K or 3000K
Color Rendering Index: 90+ CRI
Dimming: Triac or ELV

CONSTRUCTION: Die-cast aluminum trims available in matte black or matte powder white finish. Multiple lighting system plates accept round M2 LED luminaires.

CLEARANCE: IC rated luminaires are rated for direct contact with insulation (not spray foam insulation), no minimum clearance is required.

JUNCTION BOX: M2 LED luminaires include prewired junction box includes quick connects to LED fixtures for ease of installation. Junction box includes two 7/8" knockouts and snap on cover with 7" quick connect wire. Luminaire includes 6" quick connect wire.

MOUNTING: No housing is required, four tensions steel spring clips secure luminaire to ceiling. Accommodates ceiling thickness up to 5/8".

COMPATIBLE M2 LED LUMINAIRES:

NM2-2RDC Round LED Open Downlight
NM2-2RDGS Round LED Lensed Downlight
NM2-2RG Round LED Adjustable Gimbal
NM2-2R270 Round LED Adjustable Elbow

LISTING & WARRANTY:

- NM2-2R is cETLus Listed for Damp Locations
- NM2-MLS is suitable for Damp Locations
- NM2-2R is ENERGY STAR certified
- 5 Year Limited Warranty
- FCC compliant
- NM2-2R is certified to the high efficacy requirements of California Title 24 JA8-2019



M2 MLS LED LUMINAIRES



2" M2 ROUND LED LUMINAIRES

SERIES	LUMENS / WATTAGE	CCT / CRI	FINISH
NM2-2RDC 2" Round Open Downlight	40 400lm / 6W	27 2700K / 90 CRI	BB Matte Black
NM2-2RDCS 2" Round Lensed Downlight	60 600lm / 8W	30 3000K / 90 CRI	MPW Matte Powder White
NM2-2RG 2" Round Adjustable Gimbal			
NM2-2R270 2" Round Adjustable Elbow	50 500lm / 6W	27 2700K / 90 CRI 30 3000K / 90 CRI	BB Matte Black MPW Matte Powder White

Example: **NM2-2RDC6027BB** - 2" M2 Round LED Open Downlight, 600lm / 10W, 2700K / 90 CRI, Matte Black finish

Round M2 LED luminaires are compatible with M2 Multiple Lighting System plates and allow each luminaire to be individually addressed.

ELECTRICAL:

Voltage: 120V

Lumens / Wattage: 400lm / 6W; 500lm / 6W; 600lm / 8W

Color Temperature: 2700K or 3000K

Color Rendering Index: 90+ CRI

Dimming: Triac or ELV

CONSTRUCTION: Die-cast aluminum trims available in matte black or matte powder white finish. Downlight includes a reflector with the same finish as trim. Adjustable elbow rotates 345° horizontally and extends up to 70°. Optional field changeable square trim is available. Adjustable gimbal is adjustable up to 15°.

AIR FLOW RESTRICTION: Luminaire has factory installed gasket to restrict airflow from room into ceiling plenum to <2CFM (cubic feet per minute) in accordance with ASTM-283 Air-Tight requirements.

CLEARANCE: IC rated luminaires are rated for direct contact with insulation (not spray foam insulation), no minimum clearance is required.

JUNCTION BOX: Prewired junction box includes quick connect to LED fixtures for ease of installation. Junction box includes two 7/8" knockouts and snap on cover with 7" quick connect wire. Luminaire includes 5" quick connect wire.

MOUNTING: No housing is required, two tensions steel spring clips secure luminaire to ceiling.

OPTIONAL MOUNTING ACCESSORIES:

NM2-EW-4 4' Quick Connect Linkable Extension Cable
NM2-EW-10 10' Quick Connect Linkable Extension Cable

LISTING & WARRANTY:

- cETLus Listed for Damp Locations
- ENERGY STAR certified
- 5 Year Limited Warranty
- FCC compliant
- Certified to the high efficacy requirements of California Title 24 JA8-2019

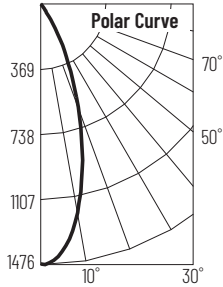


M2 SERIES PHOTOMETRICS

ROUND DOWNLIGHT: 600LM / 3000K / 36° FLOOD

Item Number: NM2-2RDC6030MPW

Lumens: 641lm Wattage: 8.1W Efficacy: 79lpw



Zonal Lumen Summary		
Zone	Lumens	% Luminaire
0-30	547	85.4
0-40	597	93.2
0-60	626	97.8
0-90	639	99.8

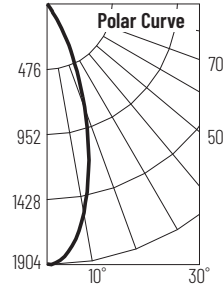
Candela Table	
Vertical Angles	Candela
0	1473
15	909
25	372
35	67
45	21

Illuminance at a Distance		
Distance from Luminaire	FC at Nadir	Beam Diameter
2'	368fc	1'-4"
4'	92.1fc	2'-7"
6'	40.9fc	3'-11"
8'	23fc	5'-2"
10'	14.7fc	6'-6"

ROUND DOWNLIGHT: 850LM / 3000K / 38° FLOOD

Item Number: NM2-2RDC8530MPW

Lumens: 882lm Wattage: 10.18W Efficacy: 87lpw



Zonal Lumen Summary		
Zone	Lumens	% Luminaire
0-30	757	85.9
0-40	824	93.4
0-60	864	98
0-90	880	99.8

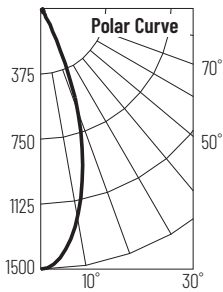
Candela Table	
Vertical Angles	Candela
0	1904
15	1246
25	540
35	88
45	27

Illuminance at a Distance		
Distance from Luminaire	FC at Nadir	Beam Diameter
2'	476fc	1'-5"
4'	119fc	2'-8"
6'	52.9fc	4'-1"
8'	29.7fc	5'-6"
10'	19fc	6'-11"

SQUARE DOWNLIGHT: 600LM / 3000K / 36° FLOOD

Item Number: NM2-2SDC6030MPW

Lumens: 629lm Wattage: 8.08W Efficacy: 78lpw



Zonal Lumen Summary		
Zone	Lumens	% Luminaire
0-30	537	85.4
0-40	575	91.4
0-60	609	96.9
0-90	626	99.5

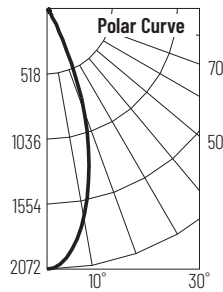
Candela Table	
Vertical Angles	Candela
0	1500
15	934
25	293
35	42
45	22

Illuminance at a Distance		
Distance from Luminaire	FC at Nadir	Beam Diameter
2'	375fc	1'-4"
4'	93.7fc	2'-7"
6'	41.7fc	3'-11"
8'	23.4fc	5'-2"
10'	15fc	6'-6"

SQUARE DOWNLIGHT: 850LM / 3000K / 36° FLOOD

Item Number: NM2-2SDC8530MPW

Lumens: 869lm Wattage: 10.18W Efficacy: 85lpw



Zonal Lumen Summary		
Zone	Lumens	% Luminaire
0-30	748	86.1
0-40	799	92
0-60	844	97.2
0-90	867	99.8

Candela Table	
Vertical Angles	Candela
0	2072
15	1286
25	429
35	56
45	29

Illuminance at a Distance		
Distance from Luminaire	FC at Nadir	Beam Diameter
2'	518fc	1'-4"
4'	130fc	2'-7"
6'	57.6fc	3'-11"
8'	32.4fc	5'-2"
10'	20.7fc	6'-6"





NORA LIGHTING, INC.
6505 Gayhart St.
Commerce, CA 90040
TEL 323.767.2600
FAX 323.722.3677
www.NoraLighting.com

DOMESTIC FACILITIES:

Atlanta, GA
Cincinnati, OH
Dallas, TX
Denver, CO
Detroit, MI
Los Angeles, CA
Louisville, KY
Nashville, TN
New York, NY

INTERNATIONAL SALES:

6505 Gayhart St.
Commerce, CA 90040
TEL 323.767.2600
FAX 323.722.3677

The products shown in this catalog
are covered by USA and International
patents. Specifications subject to
change without notice.

© Copyright 2021 Nora Lighting, Inc.
All rights reserved

